

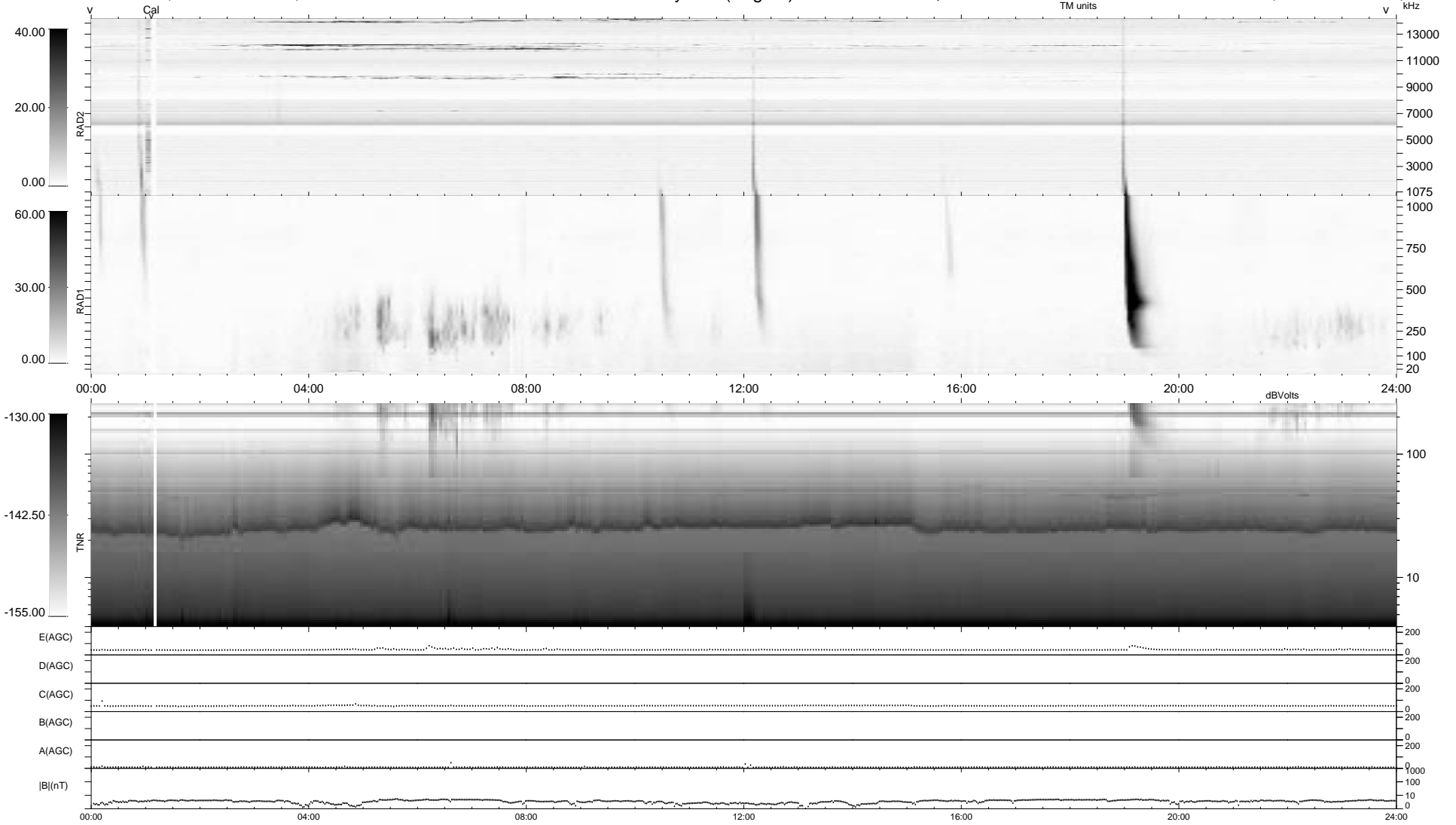
0 bad + 2 good MF/ZMF projected (100%) - 0 missing MFs  
 Avg interval = 180 secs  
 Re = 257.26 (252.08, 46.10, 22.61 GSE)

1.7d VMS-SunOS

LZ version = v01

### WIND/WAVES Summary Plot (Page 1) for 06-DEC-2007, DOY = 340

DAILY Thu Aug 28, 2008  
 Re = 257.51 (252.84, 43.17, 22.86 GSE)



```

RAD2
Antenna Ey .....
Mode LIN(1) .....
SUM/SEP SEP .....
Toggle OFF .....

RAD1
Antenna Ex .....
Mode LIS(2/4) .....
SUM/SEP SUM .....
Toggle OFF .....

TNR
Antenna ExEy .....
Mode A-32 .....
Sweep ACE .....
  
```