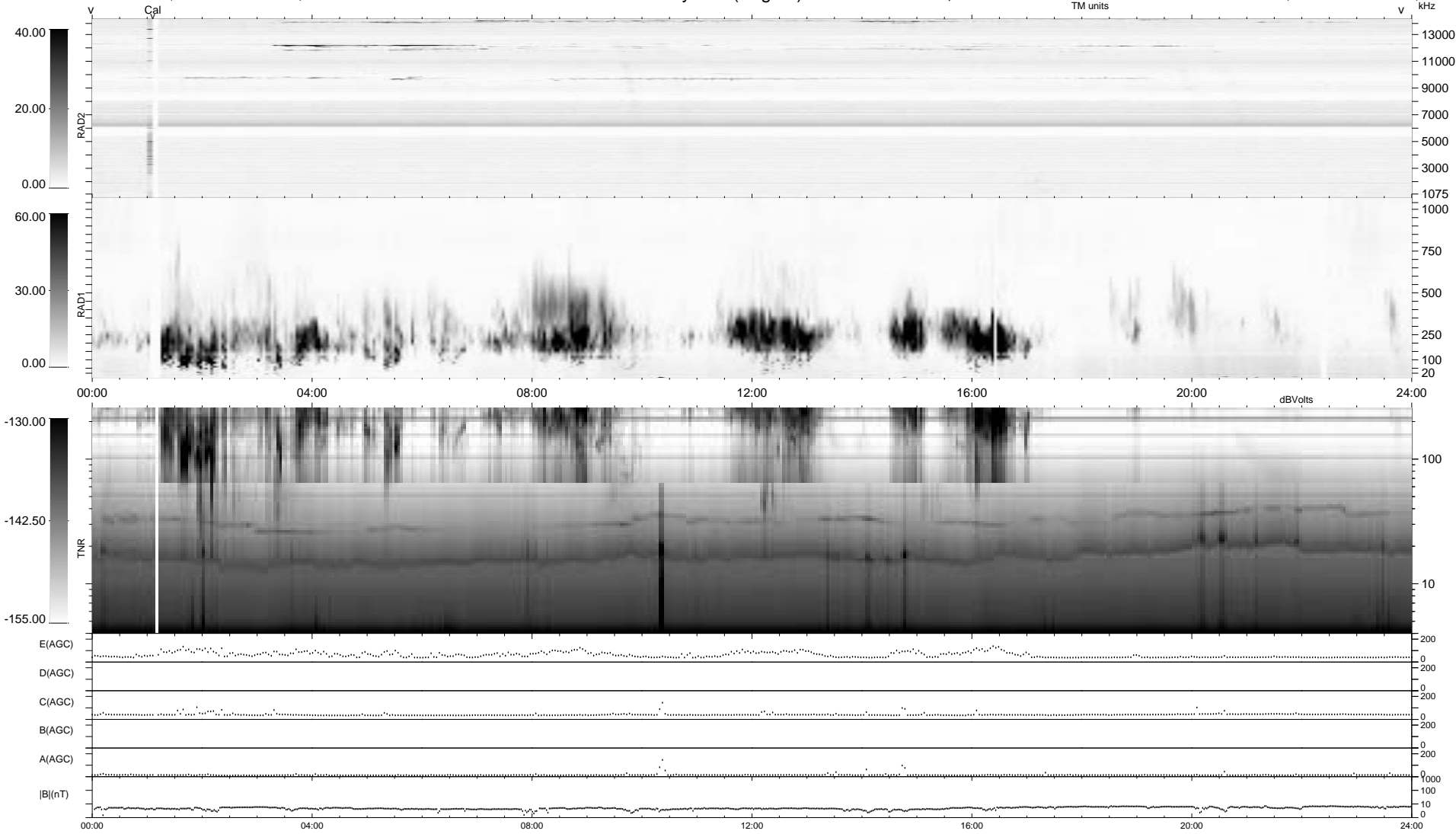


0 bad + 2 good MF/ZMF projected (100%) - 0 missing MFs
 Avg interval = 180 secs
 Re = -248.55 (229.65, 94.32, 11.81 GSE)

1.7d VMS-SunOS LZ version = v01
 DAILY Wed Aug 27, 2008
 Re = 249.17 (230.70, 93.32, 12.49 GSE)

WIND/WAVES Summary Plot (Page 1) for 14-NOV-2007, DOY = 318



```

RAD2
Antenna Ey .....
Mode LIN(1) .....
SUM/SEP SEP .....
Toggle OFF .....

RAD1
Antenna Ex .....
Mode LIS(2,4) .....
SUM/SEP SUM .....
Toggle OFF .....

TNR
Antenna ExEy .....
Mode A-32 .....
Sweep ACE .....
  
```