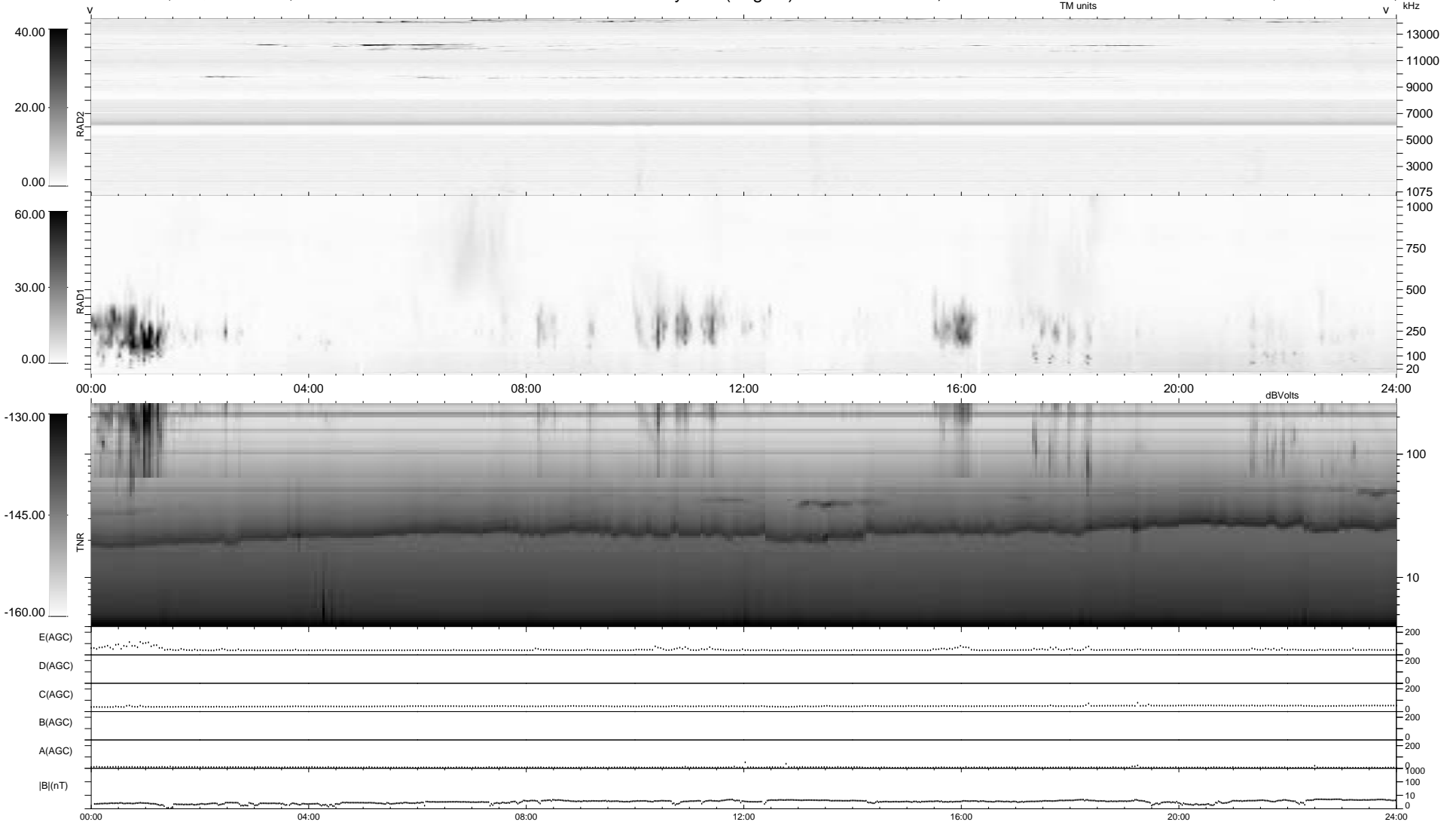


0 bad + 2 good MF/ZMF projected (100%) - 0 missing MFs
 Avg interval = 180 secs
 Re = 235.33 (214.63, 96.49, 2.29 GSE)

1.7d VMS-SunOS LZ version = v01
 DAILY Wed Aug 27, 2008
 Re = 236.56 (215.76, 96.94, 3.05 GSE)

WIND/WAVES Summary Plot (Page 1) for 01-NOV-2007, DOY = 305



```

RAD2
Antenna Ey .....
Mode LIN(1) .....
SUM/SEP SEP .....
Toggle OFF .....

RAD1
Antenna Ex .....
Mode LIS(2/4) .....
SUM/SEP SUM .....
Toggle OFF .....

TNR
Antenna ExEy .....
Mode A-32 .....
Sweep ACE .....
  
```