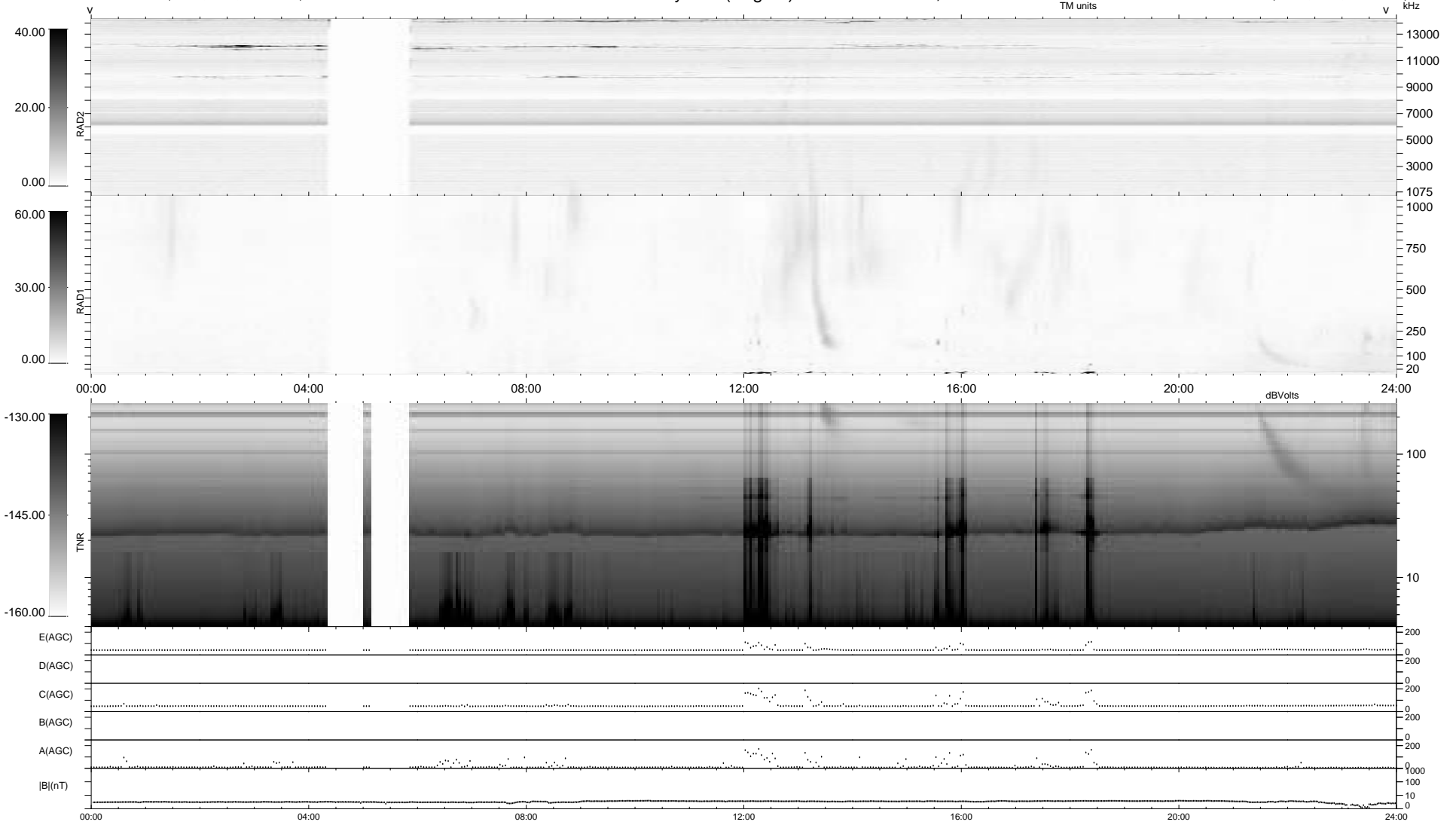


0 bad + 2 good MF/ZMF projected (100%) - 0 missing MFs
 Avg interval = 180 secs
 Re = 207.79 (200.93, 50.83, -14.91 GSE)

1.7d VMS-SunOS LZ version = v01
 DAILY Wed Aug 27, 2008
 Re = 208.86 (201.25, 54.01, -14.38 GSE)

WIND/WAVES Summary Plot (Page 1) for 08-OCT-2007, DOY = 281



```

RAD2
Antenna Ey .....
Mode LIN(1) .....
SUM/SEP SEP .....
Toggle OFF .....

RAD1
Antenna Ex .....
Mode LIS(2/4) .....
SUM/SEP SUM .....
Toggle OFF .....

TNR
Antenna ExEy .....
Mode A-32 .....
Sweep ACE .....
  
```