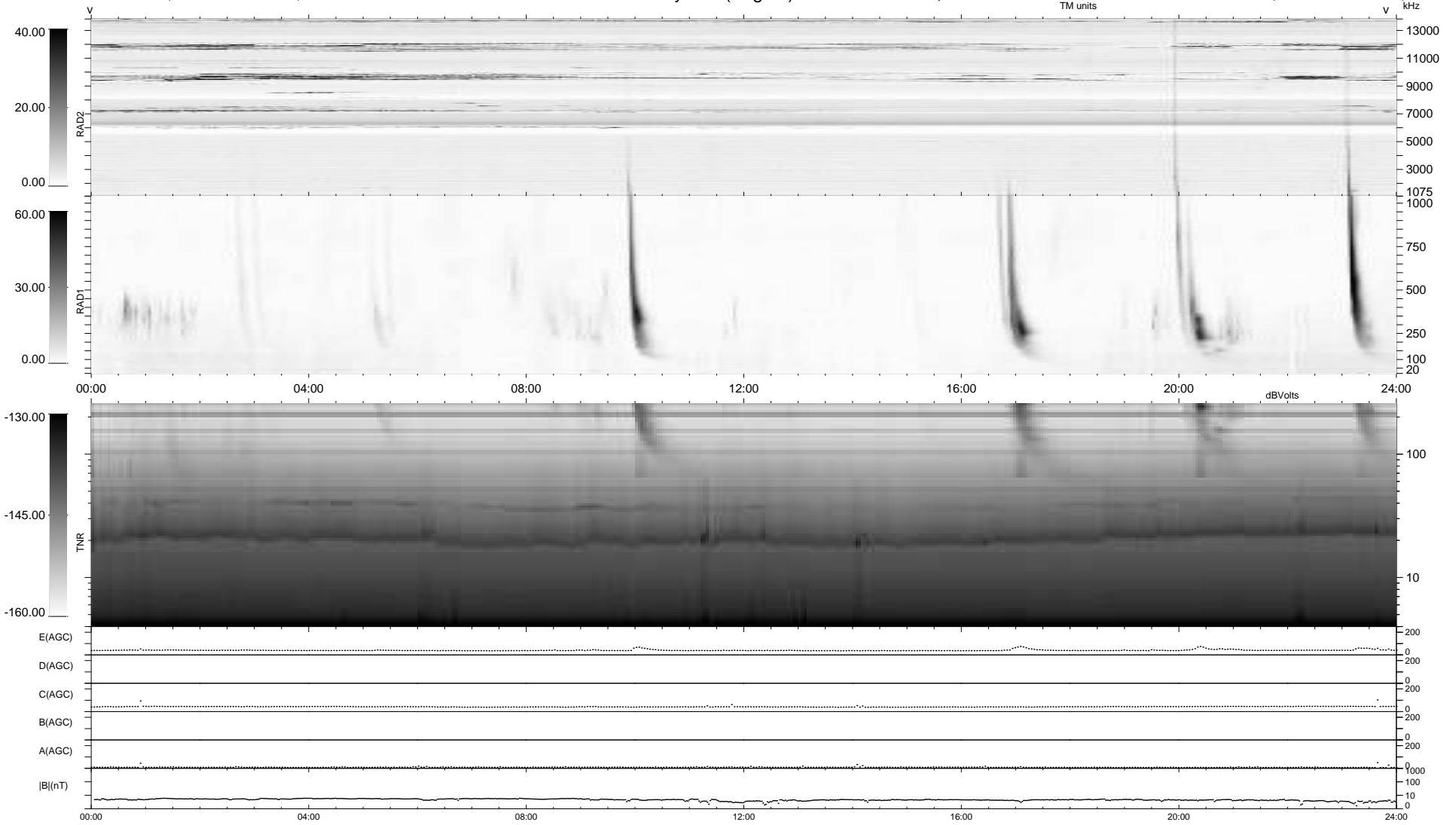


15 bad + 924 good MF/939MF projected (98%) - 0 missing MFs  
 Avg interval = 180 secs  
 Re = 238.51 (217.89, -96.92, -3.86 GSE)

1.7d VMS-SunOS LZ version = v01  
 DAILY Mon May 10, 2010  
 Re = 237.14 (216.79, -96.00, -4.60 GSE)

### WIND/WAVES Summary Plot (Page 1) for 17-AUG-2007, DOY = 229



```

RAD2
Antenna Ey .....
Mode LIN(1) .....
SUM/SEP SEP .....
Toggle OFF .....

RAD1
Antenna Ex .....
Mode LIS(2,4) .....
SUM/SEP SUM .....
Toggle OFF .....

TNR
Antenna ExEy .....
Mode A-32 .....
Sweep ACE .....
  
```