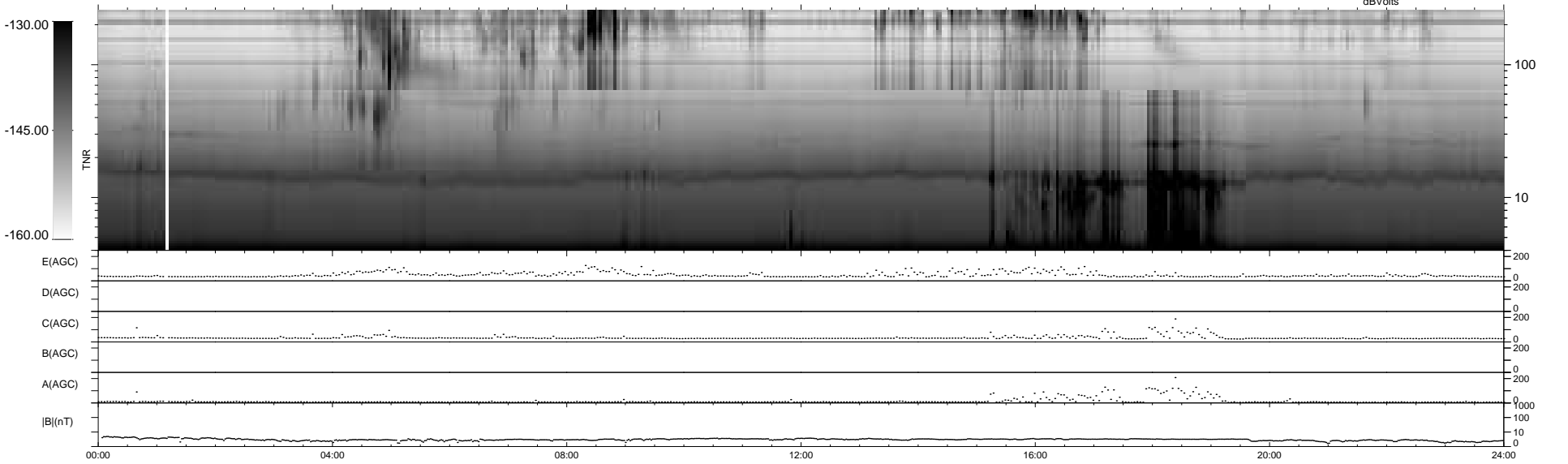
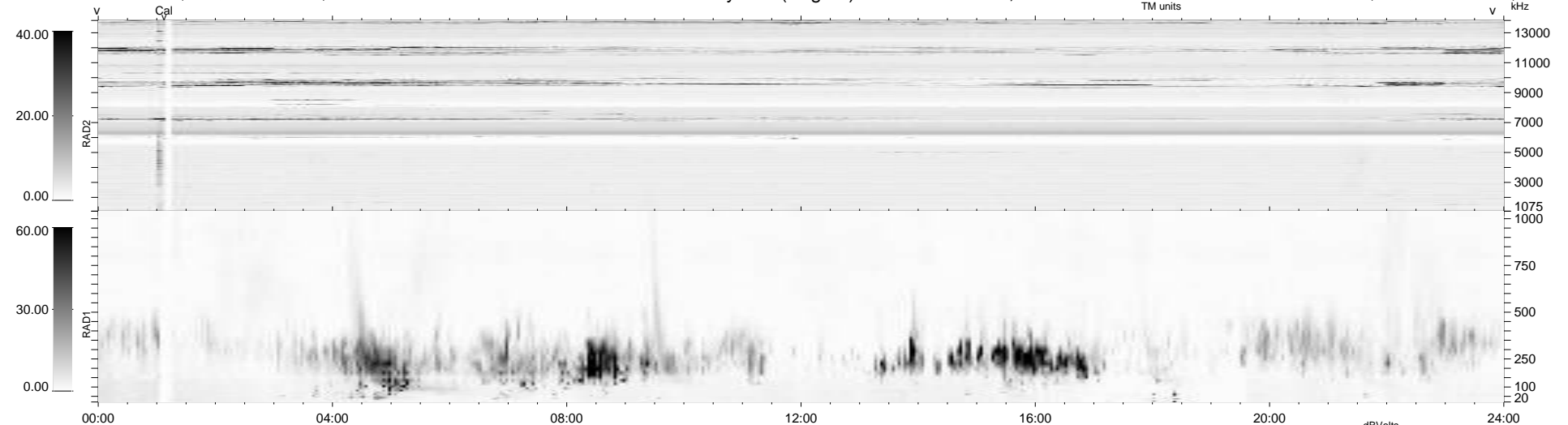


7 bad + 932 good MF/939MF projected (99%) - 0 missing MFs
 Avg interval = 180 secs
 Re = -248.78 (227.67, -100.26, 2.96 GSE)

1.7d VMS-SunOS LZ version = v02
 DAILY Mon May 10, 2010
 Re = 247.89 (226.63, -100.40, 2.22 GSE)

WIND/WAVES Summary Plot (Page 1) for 08-AUG-2007, DOY = 220



RAD2
 Antenna Ey
 Mode LIN(1)
 SUM/SEP SEP
 Toggle OFF

RAD1
 Antenna Ex
 Mode LIS(2,4)
 SUM/SEP SUM
 Toggle OFF

TNR
 Antenna ExEy
 Mode A-32
 Sweep ACE