

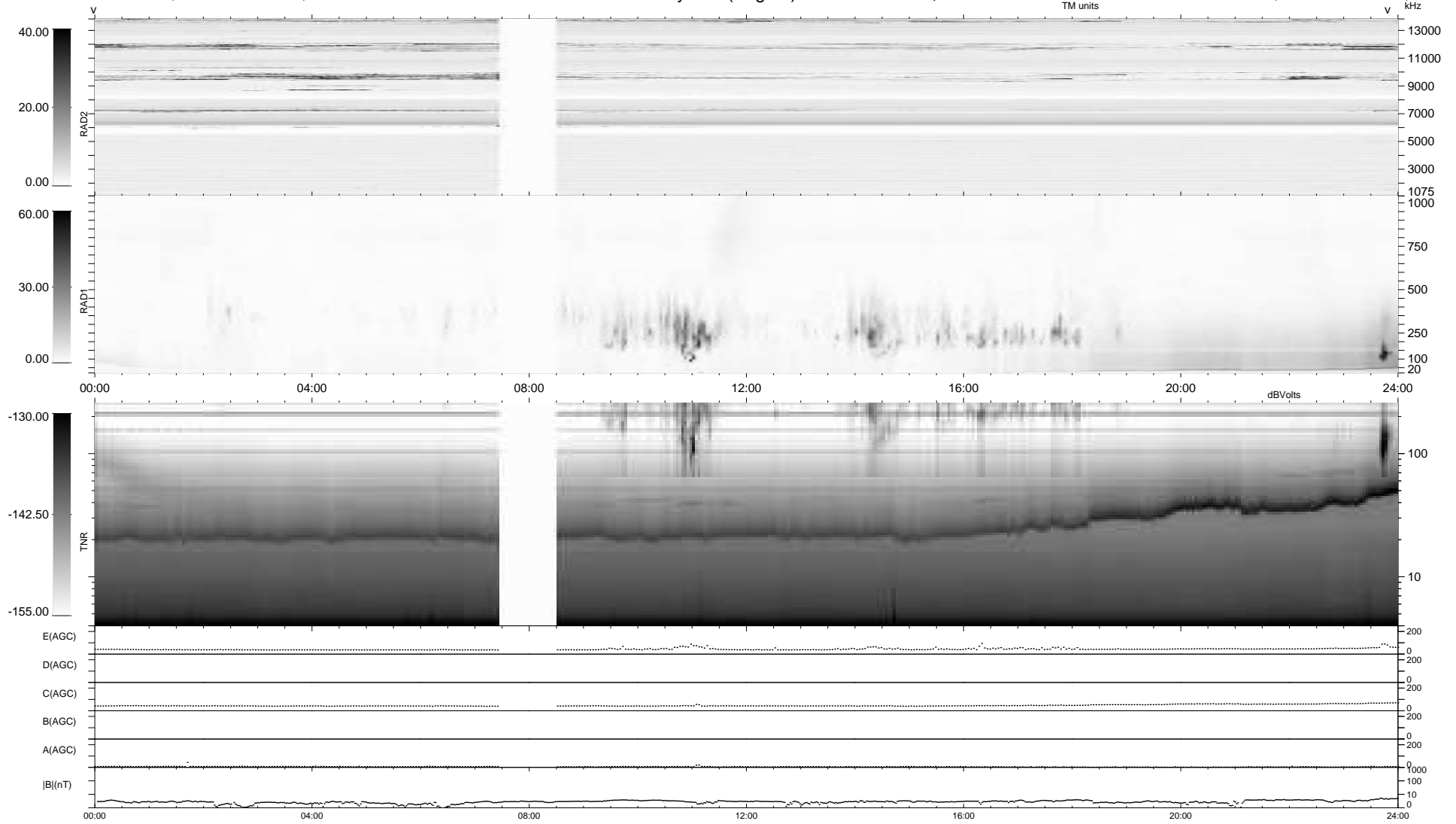
48 bad + 891 good MF/939MF projected (94%) - 0 missing MFs  
 Avg interval = 180 secs  
 Re = 256.30 (239.95, -89.45, 10.67 GSE)

1.7d VMS-SunOS

LZ version = v01

WIND/WAVES Summary Plot (Page 1) for 28-JUL-2007, DOY = 209

DAILY Mon May 10, 2010  
 Re = 255.68 (238.72, -91.03, 10.01 GSE)



RAD2  
 Antenna Ey .....  
 Mode LIN(1) .....  
 SUM/SEP SEP .....  
 Toggle OFF .....  
 RAD1  
 Antenna Ex .....  
 Mode LIS(2,4) .....  
 SUM/SEP SUM .....  
 Toggle OFF .....  
 TNR  
 Antenna ExEy .....  
 Mode A-32 .....  
 Sweep ACE .....