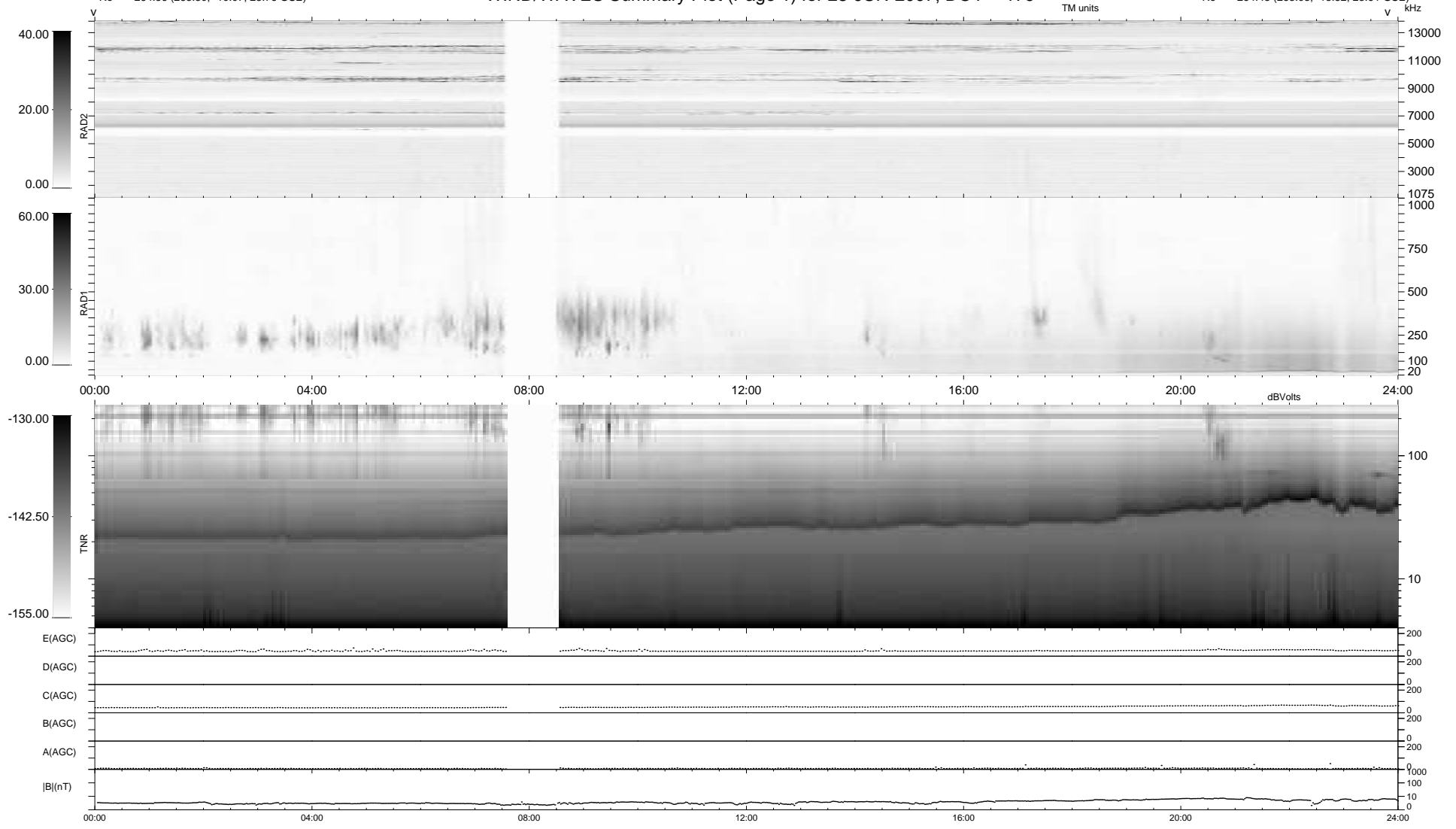


45 bad + 894 good MF/939MF projected (95%) - 0 missing MFs
 Avg interval = 180 secs
 Re = 264.56 (263.30, -10.07, 23.76 GSE)

1.7d VMS-SunOS LZ version = v01

WIND/WAVES Summary Plot (Page 1) for 28-JUN-2007, DOY = 179

DAILY Mon May 10, 2010
 Re = 264.48 (263.08, -13.52, 23.61 GSE)



RAD2
 Antenna Ey
 Mode LIN(1)
 SUM/SEP SEP
 Toggle OFF
 RAD1
 Antenna Ex
 Mode LIS(2,4)
 SUM/SEP SUM
 Toggle OFF
 TNR
 Antenna ExEy
 Mode A-32
 Sweep ACE