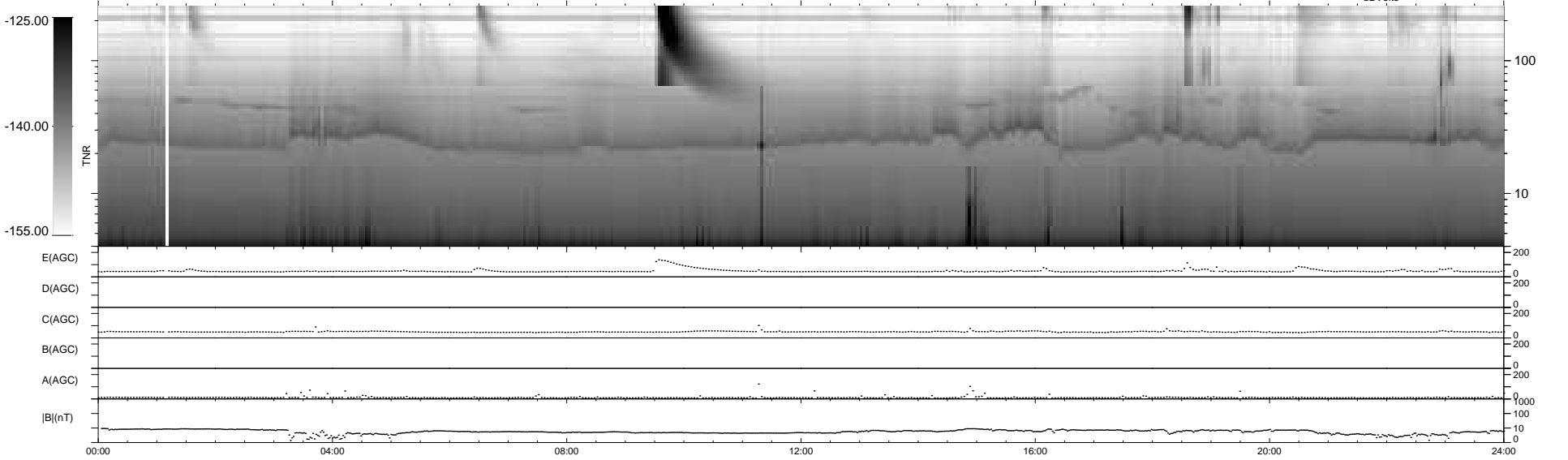
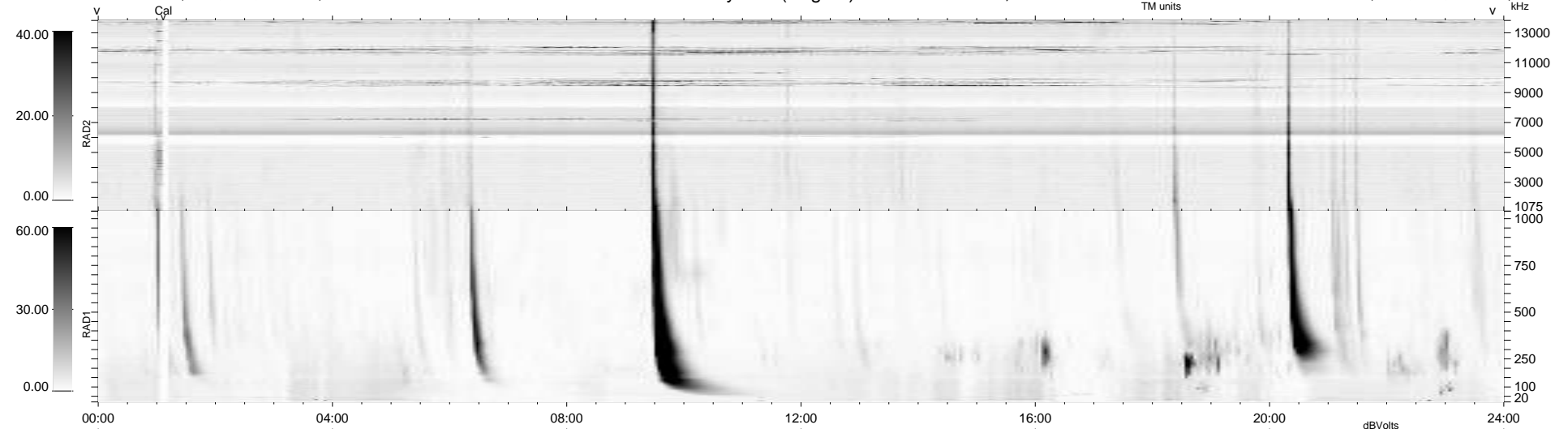


11 bad + 928 good MF/939MF projected (98%) - 0 missing MFs
 Avg interval = 180 secs
 Re = 261.17 (251.62, 66.83, 20.65 GSE)

1.7d VMS-SunOS LZ version = v02
 DAILY Mon May 10, 2010
 Re = 261.54 (252.67, 64.20, 21.03 GSE)

WIND/WAVES Summary Plot (Page 1) for 03-JUN-2007, DOY = 154



RAD2
 Antenna Ey
 Mode LIN(1)
 SUM/SEP SEP
 Toggle OFF
 RAD1
 Antenna Ex
 Mode LIS(2/4)
 SUM/SEP SUM
 Toggle OFF
 TNR
 Antenna ExEy
 Mode A-32
 Sweep ACE