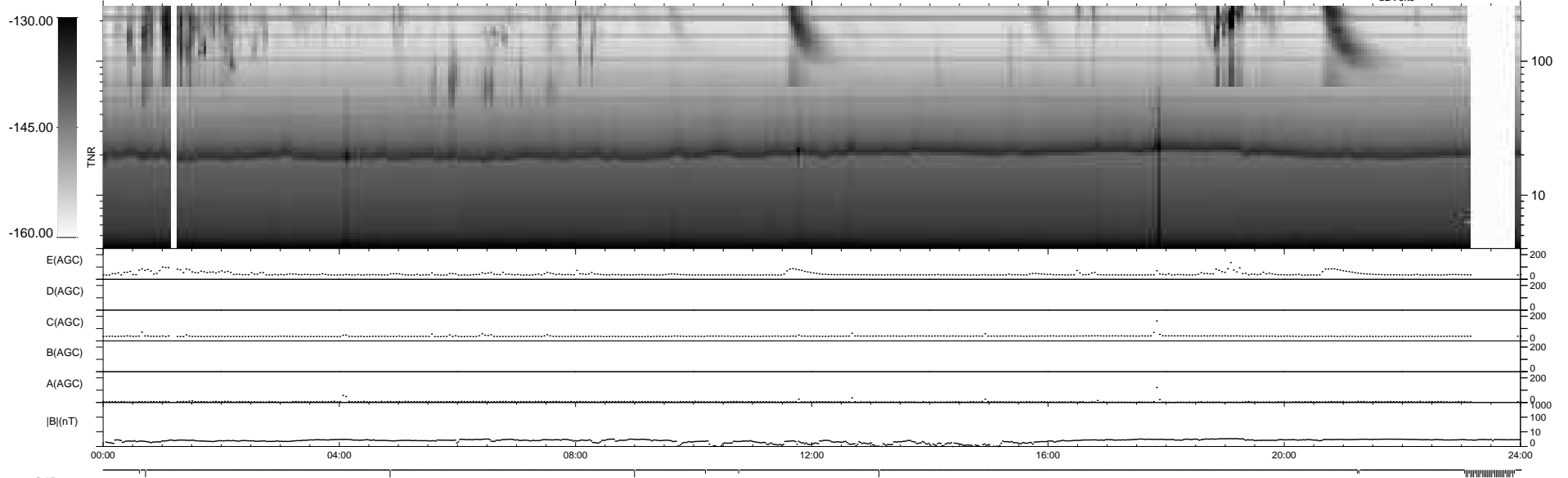
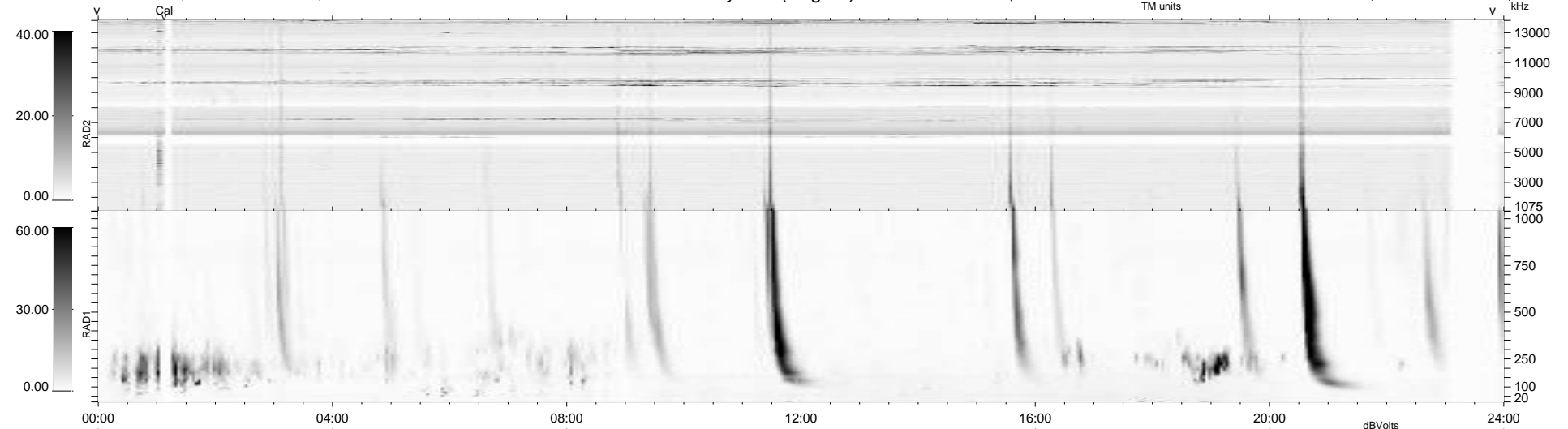


43 bad + 897 good MF/940MF projected (95%) - 0 missing MFs  
 Avg interval = 180 secs  
 Re = 259.74 (247.42, 76.73, 18.94 GSE)

1.7d VMS-SunOS LZ version = v01  
 DAILY Mon May 10, 2010  
 Re = 260.08 (248.46, 74.40, 19.39 GSE)

WIND/WAVES Summary Plot (Page 1) for 30-MAY-2007, DOY = 150



RAD2  
 Antenna Ey .....  
 Mode LIN(1) .....  
 SUM/SEP SEP .....  
 Toggle OFF .....  
 RAD1  
 Antenna Ex .....  
 Mode LIS(2,4) .....  
 SUM/SEP SUM .....  
 Toggle OFF .....  
 TNR  
 Antenna ExEy .....  
 Mode A-32 .....  
 Sweep ACE .....