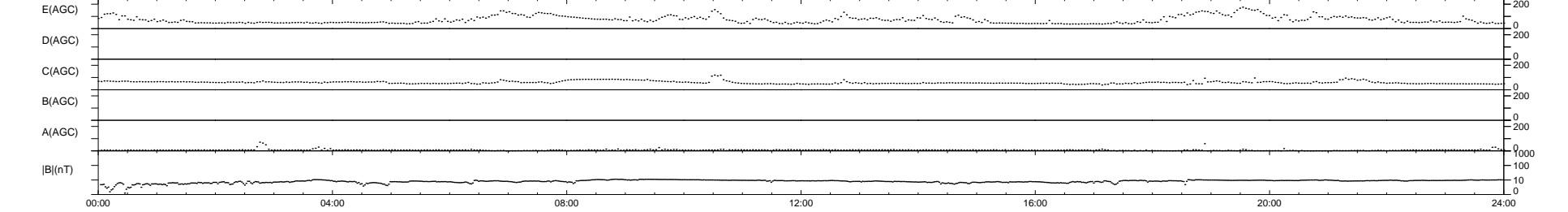
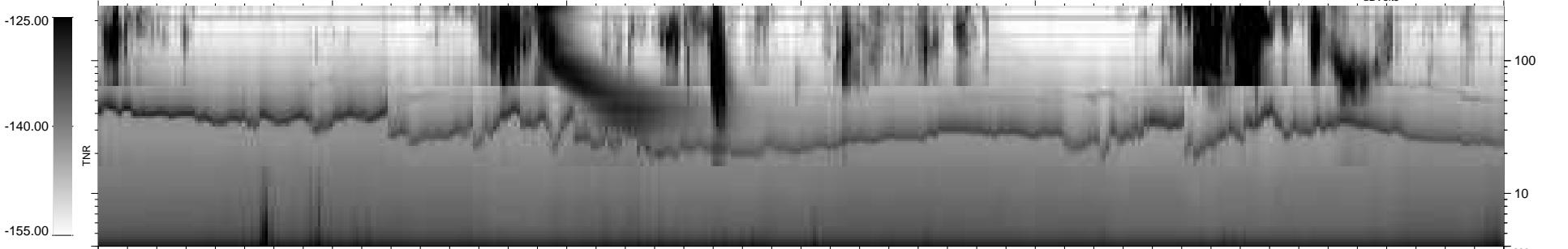
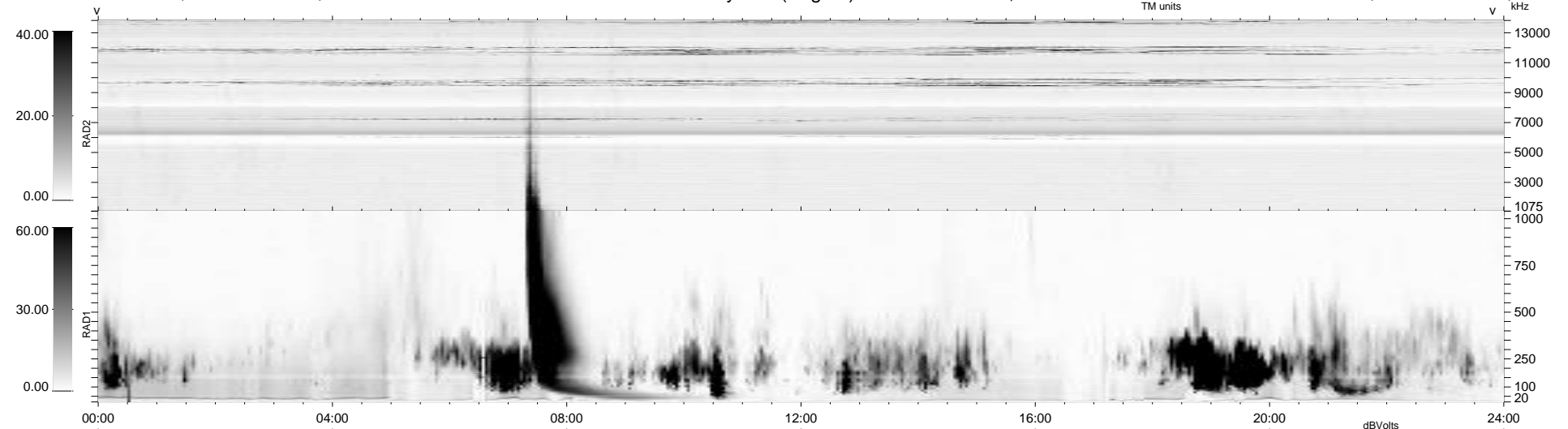


9 bad + 931 good MF/940MF projected (99%) - 0 missing MFs  
 Avg interval = 180 secs  
 Re = 256.89 (240.10, 90.04, 15.35 GSE)

1.7d VMS-SunOS LZ version = v01

WIND/WAVES Summary Plot (Page 1) for 23-MAY-2007, DOY = 143

DAILY Mon May 10, 2010  
 Re = 257.38 (241.16, 88.52, 15.91 GSE)



RAD2  
 Antenna Ey .....  
 Mode LIN(1) .....  
 SUM/SEP SEP .....  
 Toggle OFF .....  
 RAD1  
 Antenna Ex .....  
 Mode LIS(2,4) .....  
 SUM/SEP SUM .....  
 Toggle OFF .....  
 TNR  
 Antenna ExEy .....  
 Mode A-32 .....  
 Sweep ACE .....