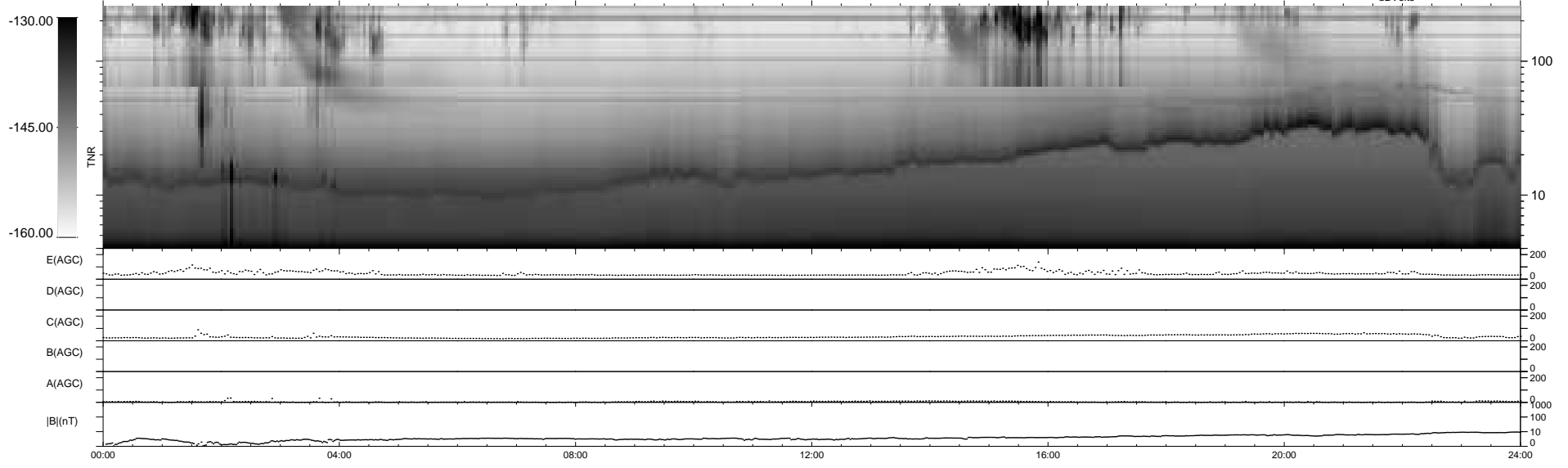
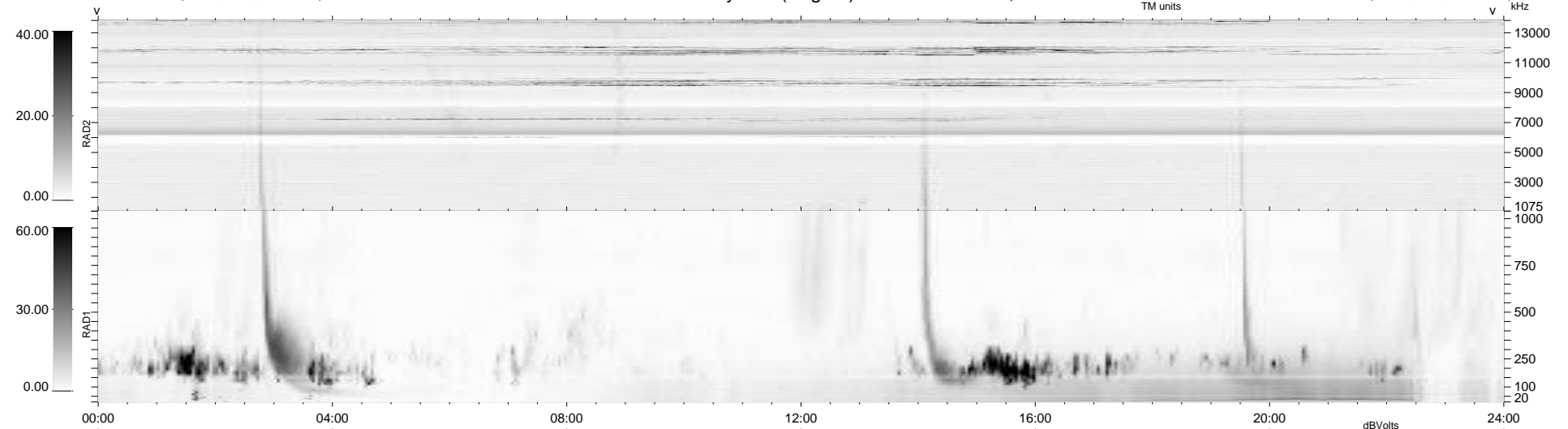


9 bad + 930 good MF/939MF projected (99%) - 0 missing MFs  
 Avg interval = 180 secs  
 Re = - 255.74 (237.93, 92.70, 14.18 GSE)

1.7d VMS-SunOS LZ version = v01  
 DAILY Mon May 10, 2010  
 Re = 256.34 (239.02, 91.45, 14.77 GSE)

WIND/WAVES Summary Plot (Page 1) for 21-MAY-2007, DOY = 141



RAD2  
 Antenna Ey  
 Mode LIN(1)  
 SUM/SEP SEP  
 Toggle OFF

RAD1  
 Antenna Ex  
 Mode LIS(2,4)  
 SUM/SEP SUM  
 Toggle OFF

TNR  
 Antenna ExEy  
 Mode A-32  
 Sweep ACE