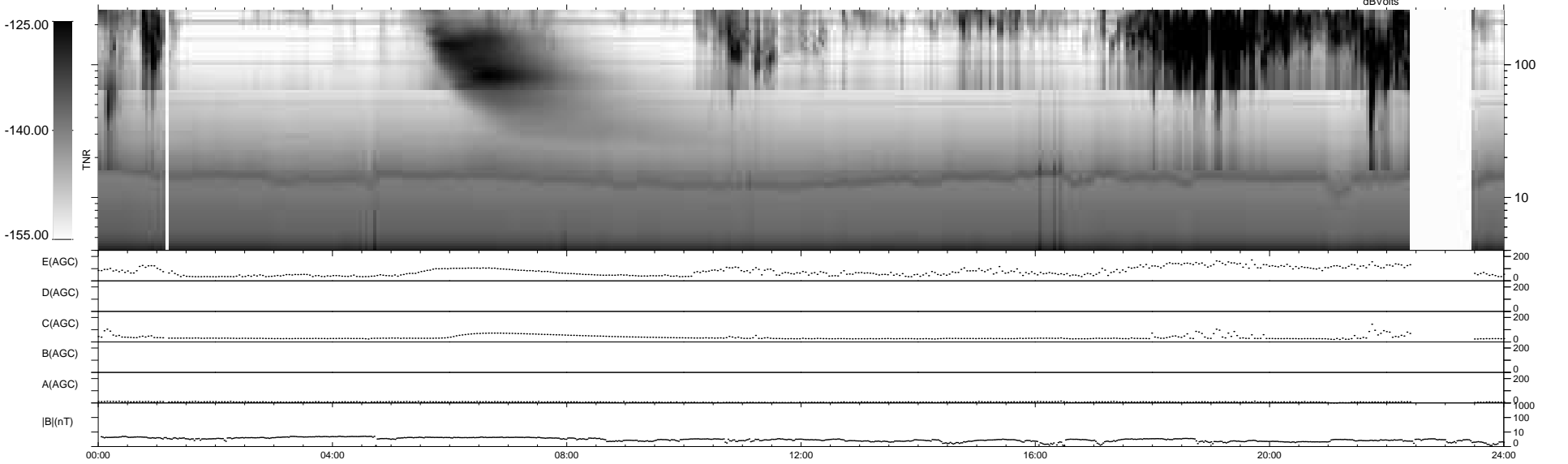
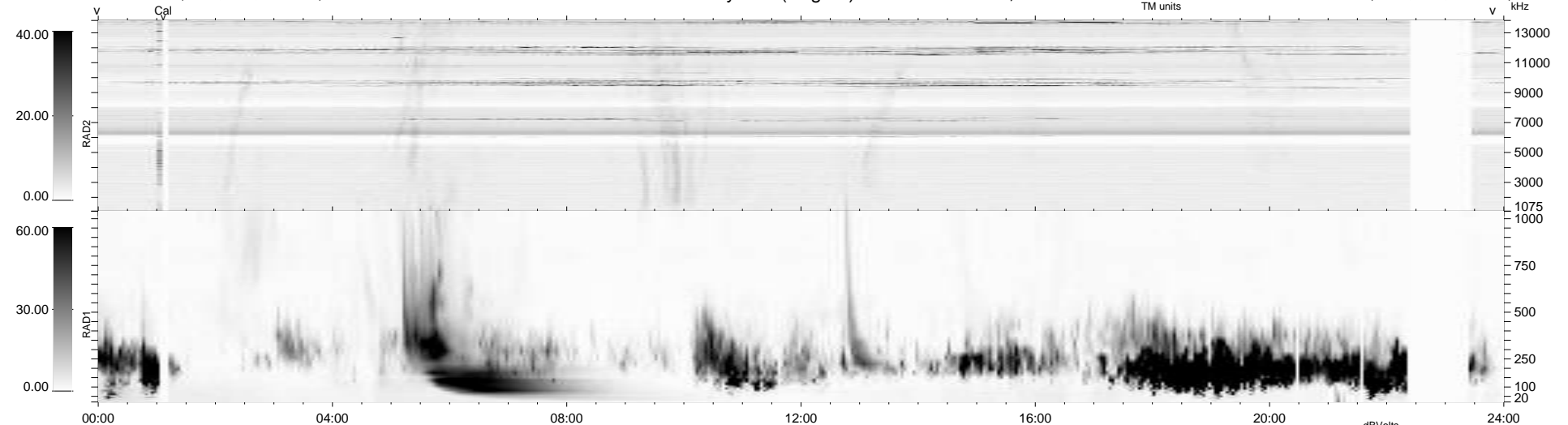


51 bad + 888 good MF/939MF projected (94%) - 0 missing MFs
 Avg interval = 180 secs
 Re = 255.08 (236.81, 93.83, 13.57 GSE)

1.7d VMS-SunOS LZ version = v01
 DAILY Mon May 10, 2010
 Re = 255.74 (237.92, 92.71, 14.18 GSE)

WIND/WAVES Summary Plot (Page 1) for 20-MAY-2007, DOY = 140



RAD2
 Antenna Ey
 Mode LIN(1)
 SUM/SEP SEP
 Toggle OFF

RAD1
 Antenna Ex
 Mode LIS(2,4)
 SUM/SEP SUM
 Toggle OFF

TNR
 Antenna ExEy
 Mode A-32
 Sweep ACE