

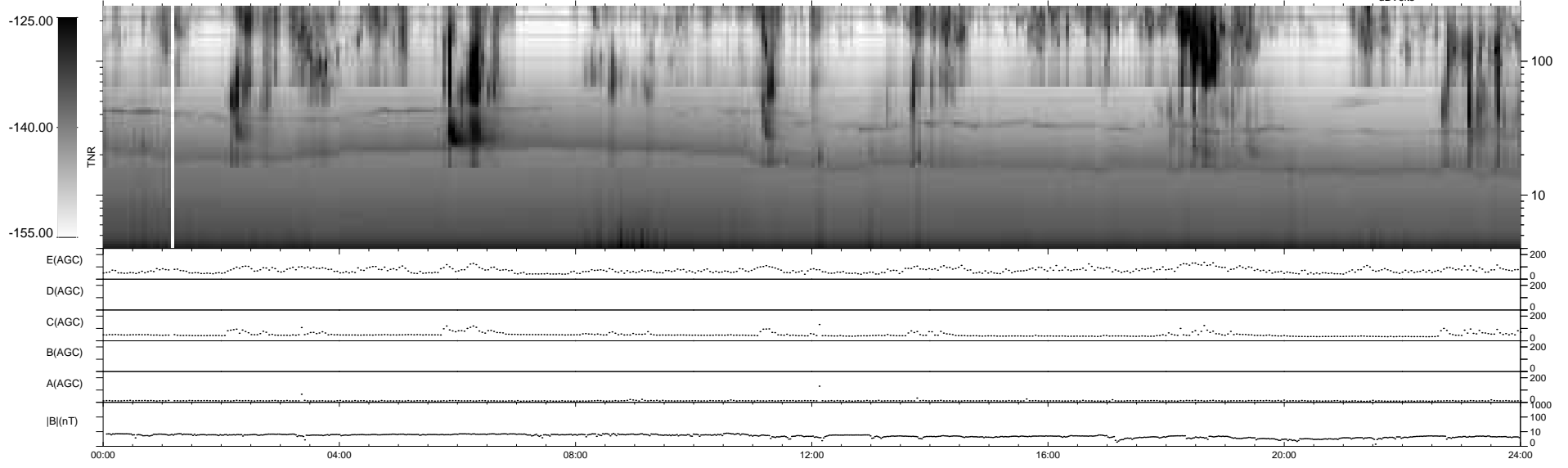
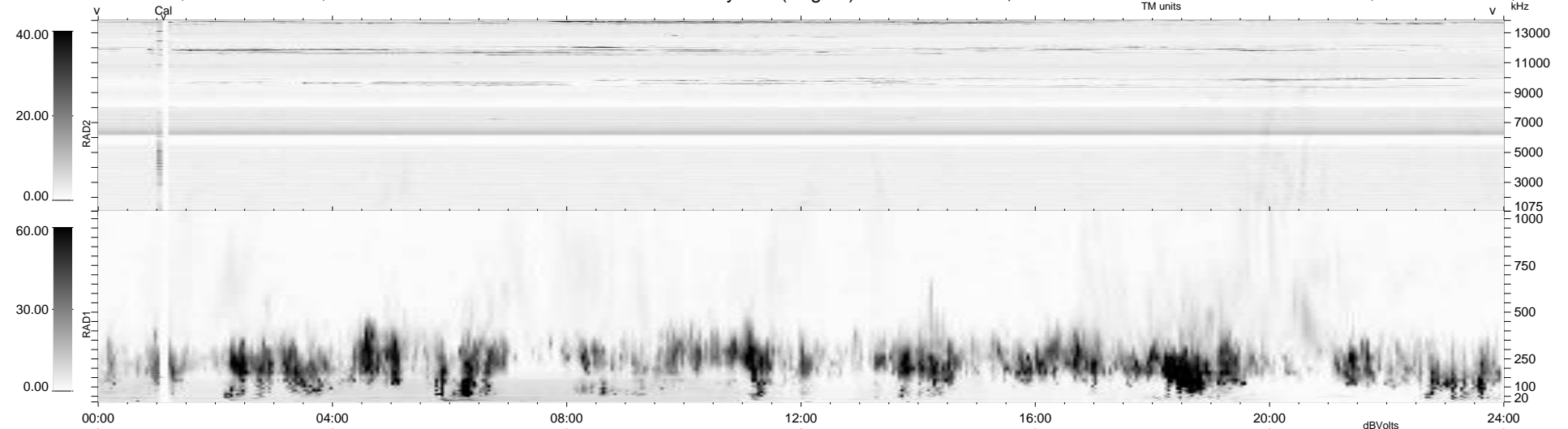
6 bad + 933 good MF/939MF projected (99%) - 0 missing MFs  
 Avg interval = 180 secs  
 Re = 200.08 (197.97, 22.77, -17.86 GSE)

1.7d VMS-SunOS

LZ version = v01

### WIND/WAVES Summary Plot (Page 1) for 02-APR-2007, DOY = 92

DAILY Mon May 10, 2010  
 Re = 200.64 (198.14, 26.21, -17.56 GSE)



```

RAD2
Antenna Ey .....
Mode LIN(1) .....
SUM/SEP SEP .....
Toggle OFF .....

RAD1
Antenna Ex .....
Mode LIS(2,4) .....
SUM/SEP SUM .....
Toggle OFF .....

TNR
Antenna ExEy .....
Mode A-32 .....
Sweep ACE .....
  
```