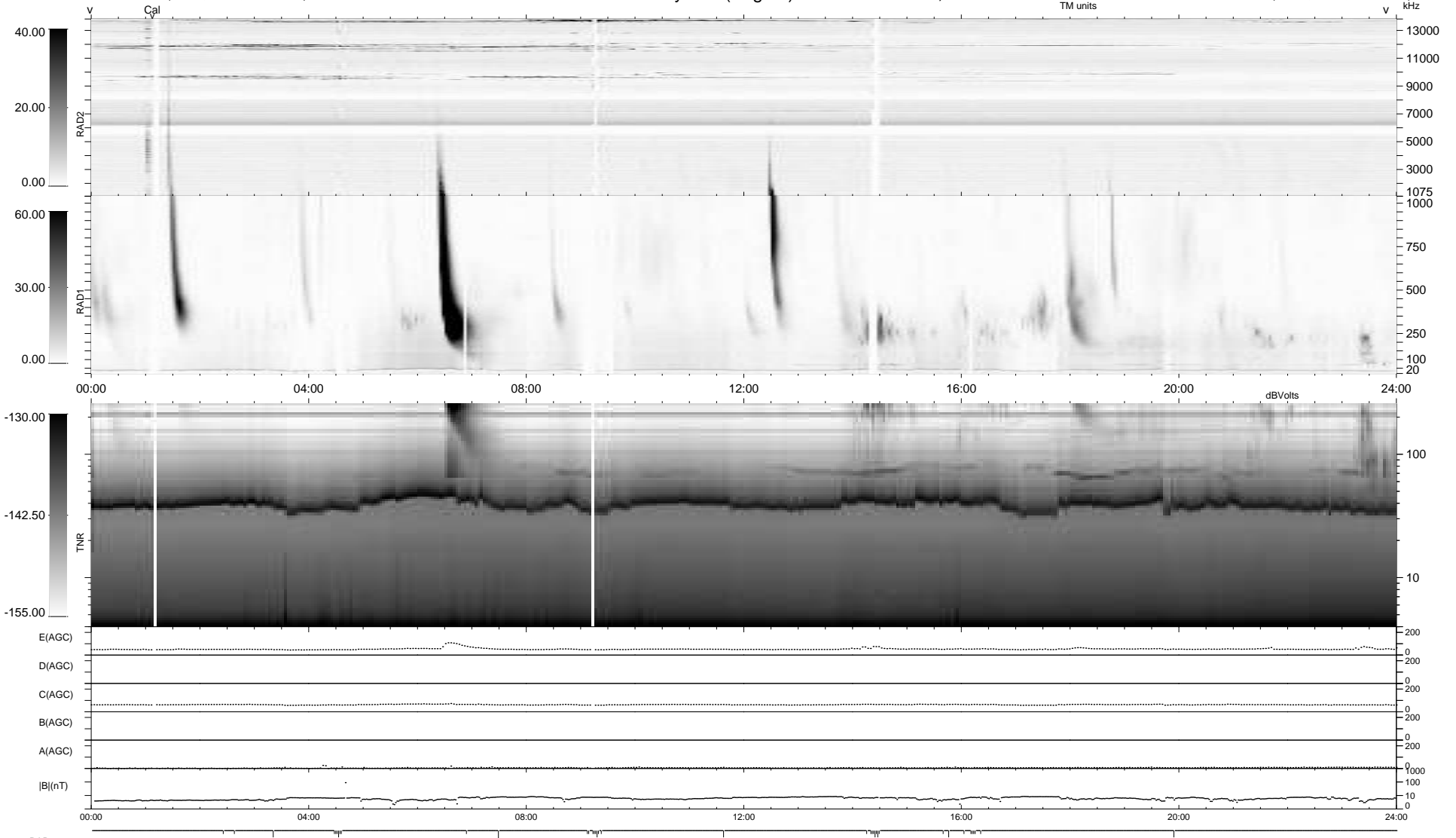


37 bad + 902 good MF/939MF projected (96%) - 0 missing MFs
 Avg interval = 180 secs
 Re = 199.68 (198.27, -13.85, -19.21 GSE)

1.7d VMS-SunOS LZ version = v01
 DAILY Mon May 10, 2010
 Re = 199.33 (198.14, -10.08, -19.22 GSE)

WIND/WAVES Summary Plot (Page 1) for 23-MAR-2007, DOY = 82



RAD2
 Antenna Ey
 Mode LIN(1)
 SUM/SEP SEP
 Toggle OFF
 RAD1
 Antenna Ex
 Mode LIS(2,4)
 SUM/SEP SUM
 Toggle OFF
 TNR
 Antenna ExEy
 Mode A-32
 Sweep ACE