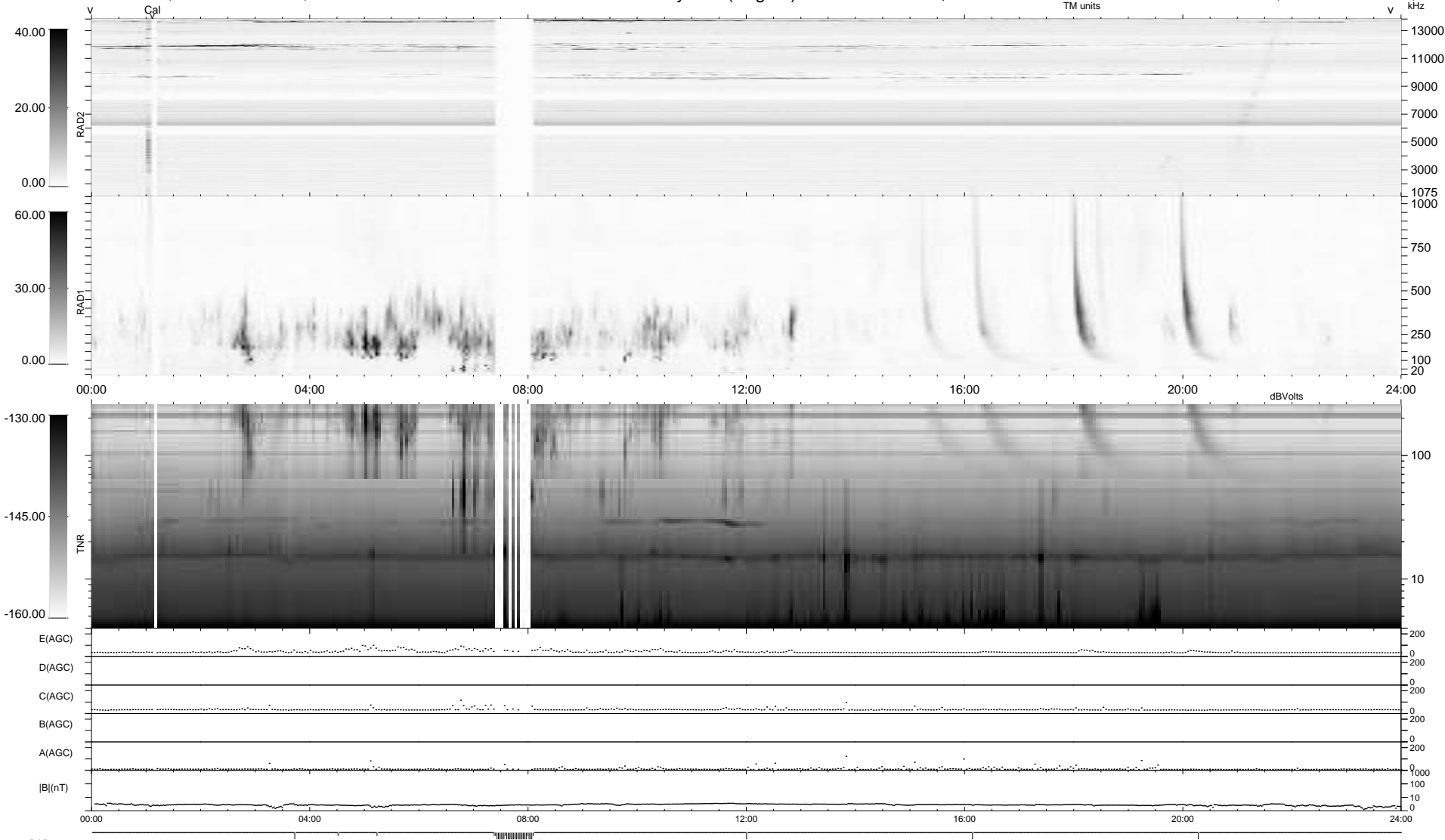


35 bad + 904 good MF/939MF projected (96%) - 0 missing MFs  
 Avg interval = 180 secs  
 Re = 202.90 (198.77, -36.28, -18.53 GSE)

1.7d VMS-SunOS LZ version = v01  
 DAILY Mon May 10, 2010  
 Re = 202.26 (198.72, -32.67, -18.72 GSE)

WIND/WAVES Summary Plot (Page 1) for 17-MAR-2007, DOY = 76



RAD2 Antenna Ey .....  
 Mode LIN(1) .....  
 SUM/SEP SEP .....  
 Toggle OFF .....  
 RAD1 Antenna Ex .....  
 Mode LIS(2,4) .....  
 SUM/SEP SUM .....  
 Toggle OFF .....  
 TNR Antenna ExEy .....  
 Mode A-32 .....  
 Sweep ACE .....