

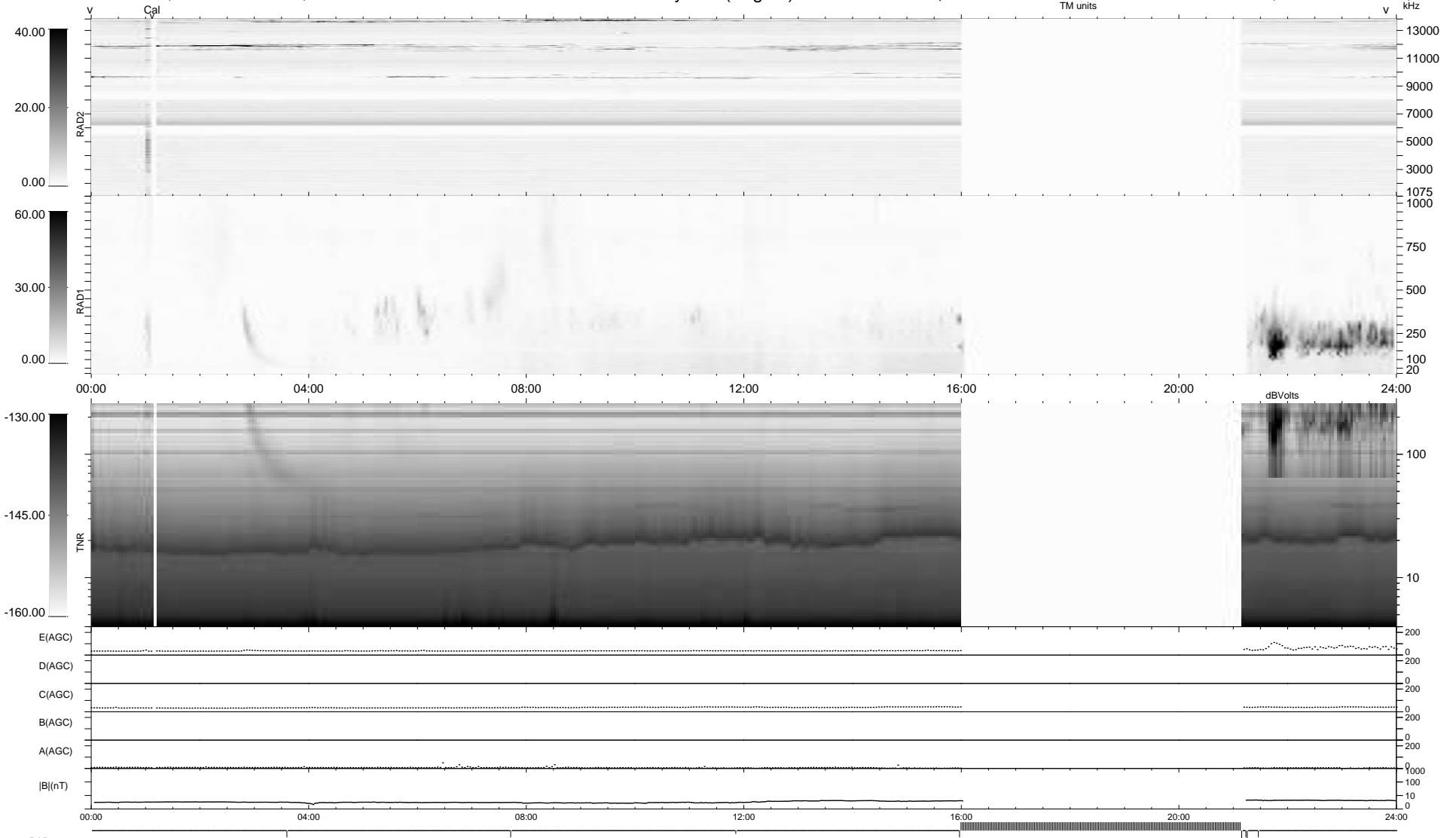
8 bad + 729 good MF/939MF projected (77%) - 202 missing MFs
 Avg interval = 180 secs
 Re = -209.41 (199.41, -61.98, -15.81 GSE)

1.7d VMS-SunOS

LZ version = v01

WIND/WAVES Summary Plot (Page 1) for 09-MAR-2007, DOY = 68

DAILY Mon May 10, 2010
 Re = 208.46 (199.22, -59.16, -16.25 GSE)



```

RAD2
Antenna Ey .....
Mode LIN(1) .....
SUM/SEP SEP .....
Toggle OFF .....

RAD1
Antenna Ex .....
Mode LIS(2,4) .....
SUM/SEP SUM .....
Toggle OFF .....

TNR
Antenna ExEy .....
Mode A-32 .....
Sweep ACE .....
  
```