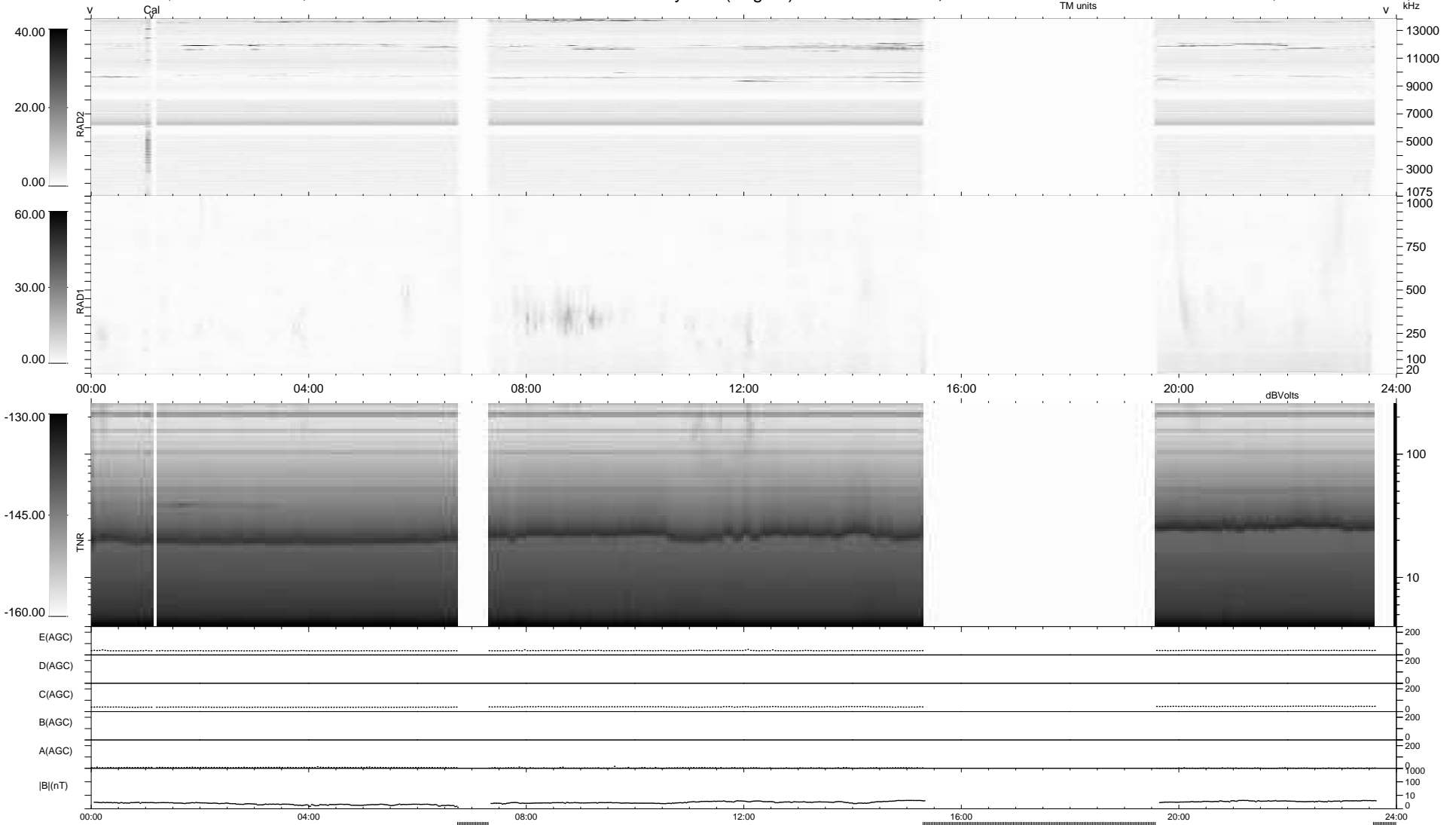


10 bad + 721 good MF/939MF projected (76%) - 208 missing MFs  
 Avg interval = 180 secs  
 Re = - 216.08 (201.66, -76.59, -12.60 GSE)

1.7d VMS-SunOS LZ version = v01  
 DAILY Mon May 10, 2010  
 Re = 214.88 (201.14, -74.44, -13.18 GSE)

### WIND/WAVES Summary Plot (Page 1) for 03-MAR-2007, DOY = 62



```

RAD2
Antenna Ey .....
Mode LIN(1) .....
SUM/SEP SEP .....
Toggle OFF .....

RAD1
Antenna Ex .....
Mode LIS(2,4) .....
SUM/SEP SUM .....
Toggle OFF .....

TNR
Antenna ExEy .....
Mode A-32 .....
Sweep ACE .....
  
```