

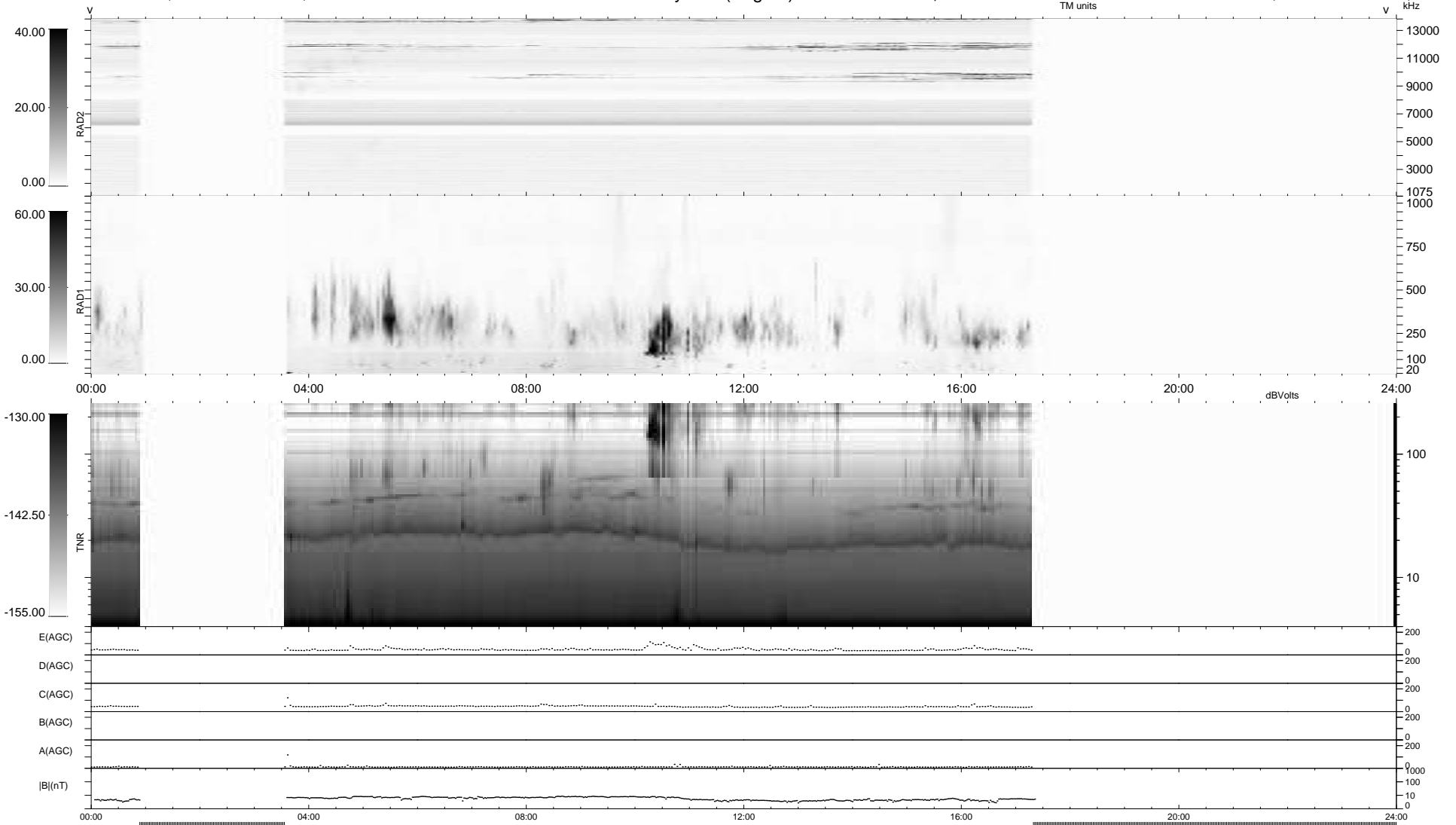
8 bad + 564 good MF/939MF projected (60%) - 367 missing MFs
 Avg interval = 180 secs
 Re = -219.96 (203.63, -82.47, -10.74 GSE)

1.7d VMS-SunOS

LZ version = v01

WIND/WAVES Summary Plot (Page 1) for 28-FEB-2007, DOY = 59

DAILY Mon May 10, 2010
 Re = 218.64 (202.92, -80.62, -11.37 GSE)



```

RAD2
Antenna Ey .....
Mode LIN(1) .....
SUM/SEP SEP .....
Toggle OFF .....

RAD1
Antenna Ex .....
Mode LIS(2,4) .....
SUM/SEP SUM .....
Toggle OFF .....

TNR
Antenna ExEy .....
Mode A-32 .....
Sweep ACE .....
  
```