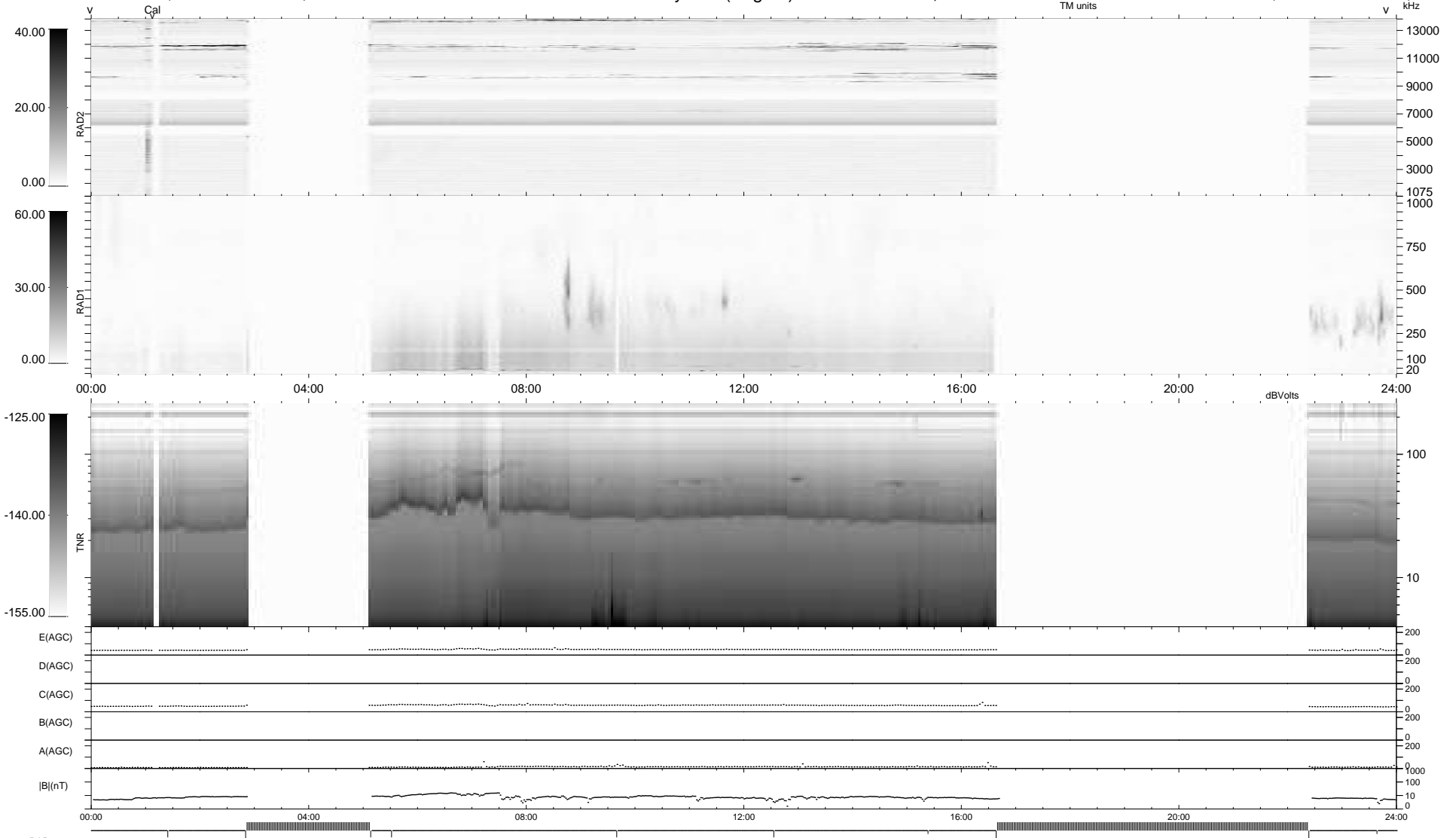


10 bad + 617 good MF/940MF projected (65%) - 313 missing MFs
 Avg interval = 180 secs
 Re = -221.32 (204.41, -84.24, -10.09 GSE)

1.7d VMS-SunOS LZ version = v01
 DAILY Mon May 10, 2010
 Re = 219.97 (203.64, -82.49, -10.73 GSE)

WIND/WAVES Summary Plot (Page 1) for 27-FEB-2007, DOY = 58



```

RAD2
Antenna Ey .....
Mode LIN(1) .....
SUM/SEP SEP .....
Toggle OFF .....

RAD1
Antenna Ex .....
Mode LIS(2,4) .....
SUM/SEP SUM .....
Toggle OFF .....

TNR
Antenna ExEy .....
Mode A-32 .....
Sweep ACE .....
  
```