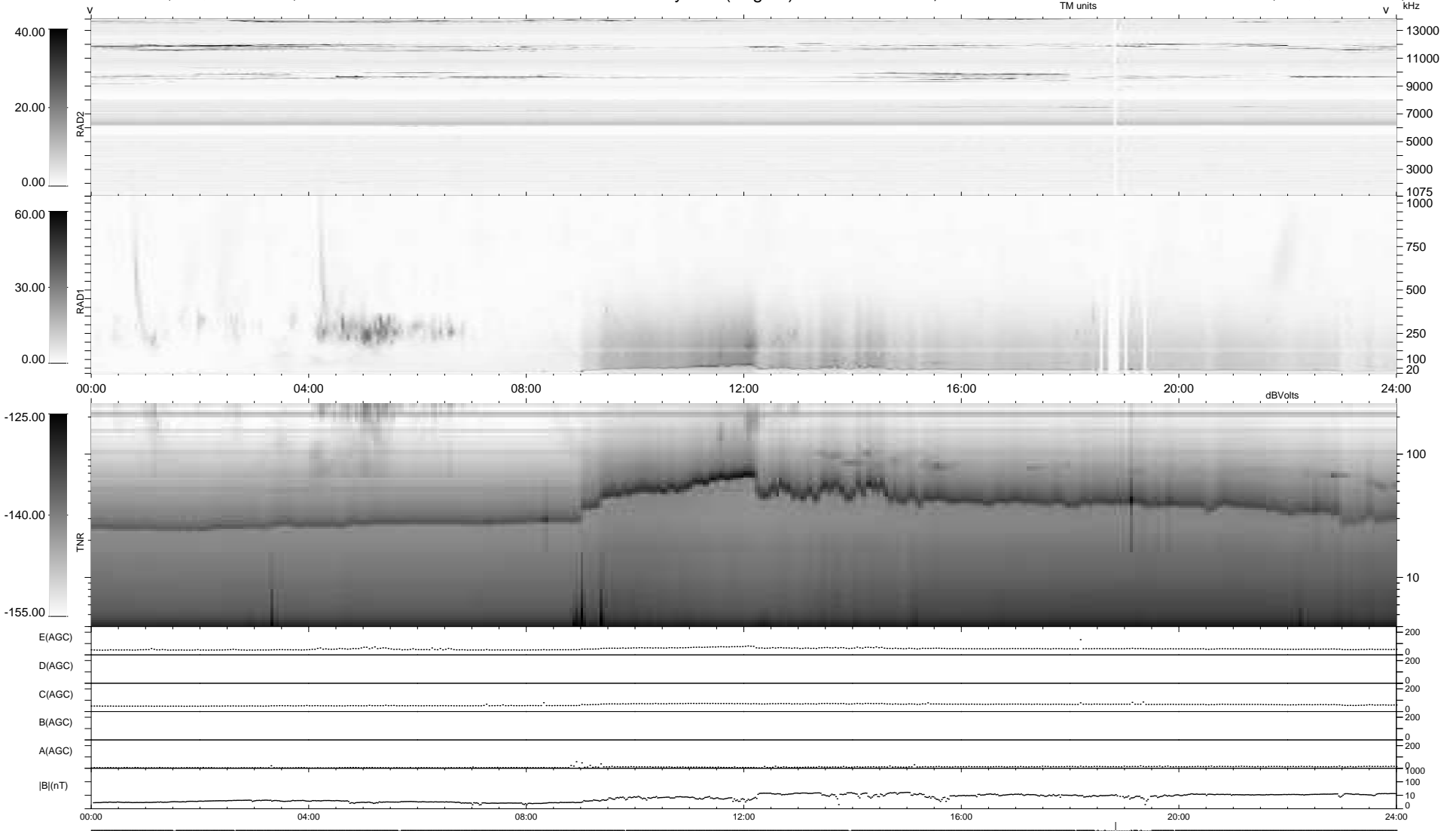


43 bad + 896 good MF/940MF projected (95%) - 1 missing MF  
 Avg interval = 180 secs  
 Re = -240.12 (218.77, -98.99, 0.50 GSE)

1.7d VMS-SunOS LZ version = v02  
 DAILY Mon May 10, 2010  
 Re = 239.20 (217.80, -98.89, -0.24 GSE)

### WIND/WAVES Summary Plot (Page 1) for 12-FEB-2007, DOY = 43



```

RAD2
Antenna Ey .....
Mode LIN(1) .....
SUM/SEP SEP .....
Toggle OFF .....

RAD1
Antenna Ex .....
Mode LIS(2,4) .....
SUM/SEP SUM .....
Toggle OFF .....

TNR
Antenna ExEy .....
Mode A-32 .....
Sweep ACE .....
  
```