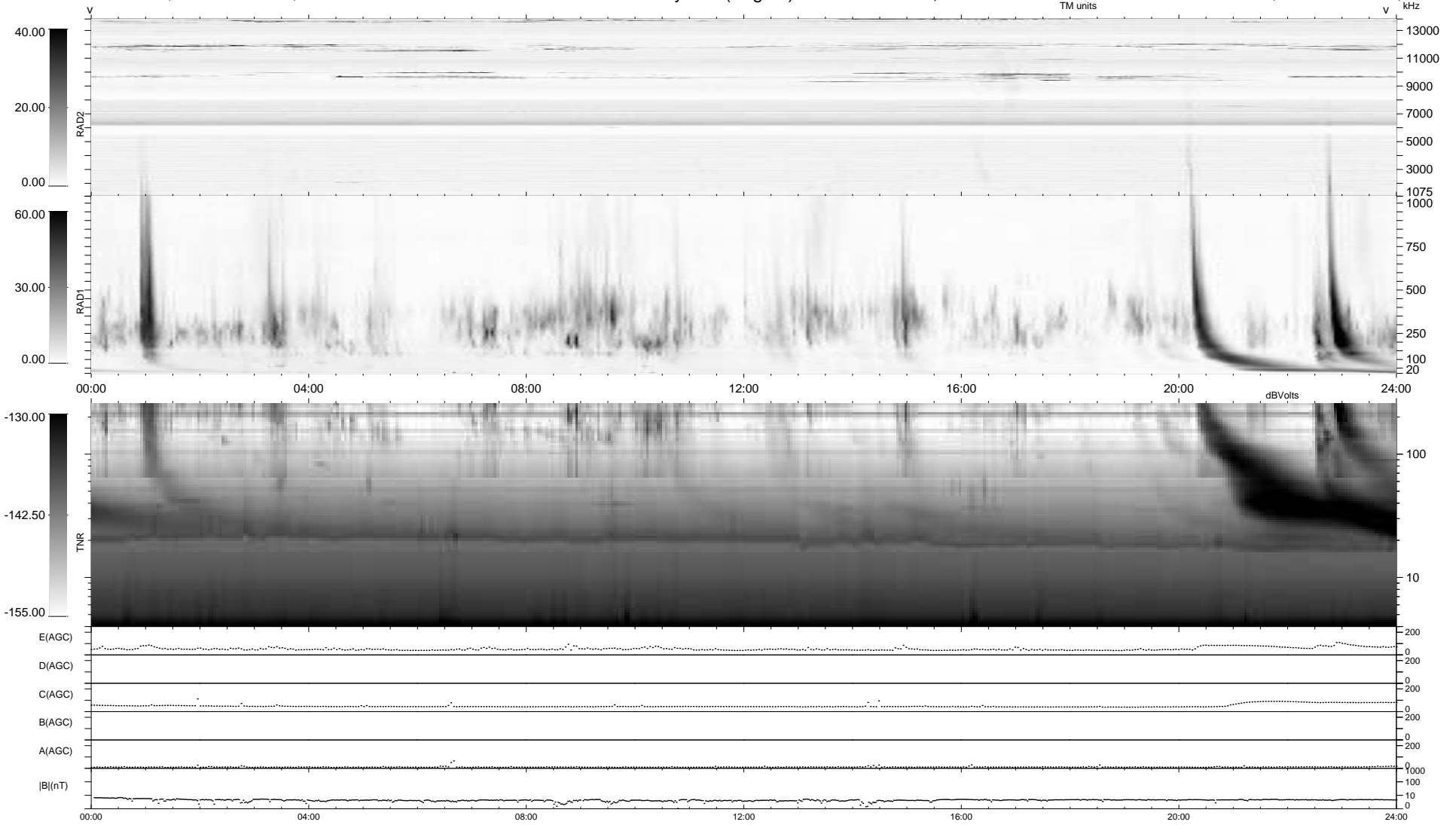


11 bad + 928 good MF/939MF projected (98%) - 0 missing MFs
 Avg interval = 180 secs
 Re = -243.35 (222.79, -97.84, 3.48 GSE)

1.7d VMS-SunOS LZ version = v02
 DAILY Mon May 10, 2010
 Re = 242.61 (221.76, -98.35, 2.74 GSE)

WIND/WAVES Summary Plot (Page 1) for 08-FEB-2007, DOY = 39



RAD2
 Antenna Ey
 Mode LIN(1)
 SUM/SEP SEP
 Toggle OFF

RAD1
 Antenna Ex
 Mode LIS(2,4)
 SUM/SEP SUM
 Toggle OFF

TNR
 Antenna ExEy
 Mode A-32
 Sweep ACE