

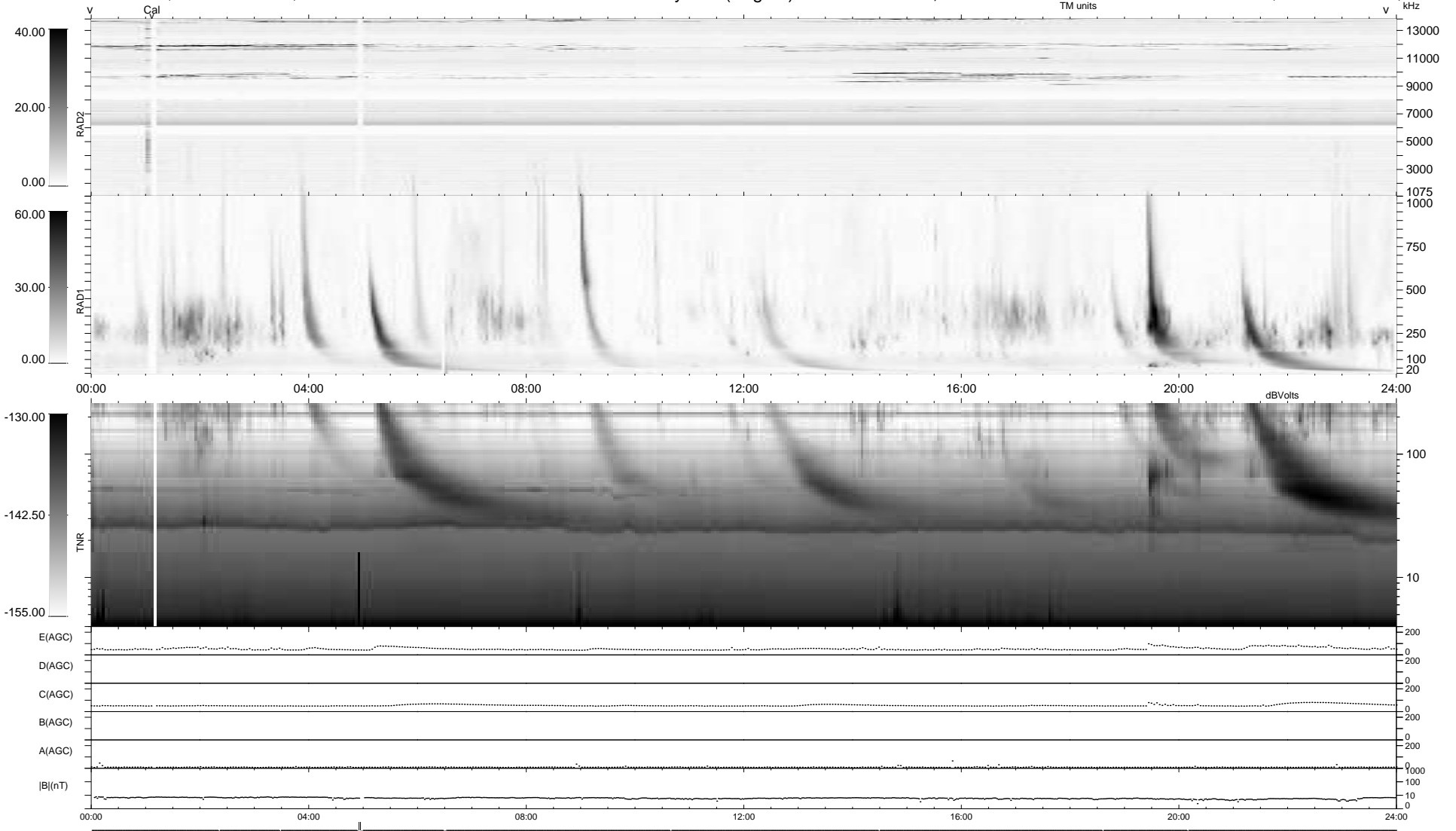
10 bad + 927 good MF/939MF projected (98%) - 2 missing MFs
 Avg interval = 180 secs
 Re = 244.07 (223.84, -97.18, 4.23 GSE)

1.7d VMS-SunOS

LZ version = v01

WIND/WAVES Summary Plot (Page 1) for 07-FEB-2007, DOY = 38

DAILY Mon May 10, 2010
 Re = 243.35 (222.79, -97.84, 3.49 GSE)



RAD2
 Antenna Ey
 Mode LIN(1)
 SUM/SEP SEP
 Toggle OFF
 RAD1
 Antenna Ex
 Mode LIS(2,4)
 SUM/SEP SUM
 Toggle OFF
 TNR
 Antenna ExEy
 Mode A-32
 Sweep ACE