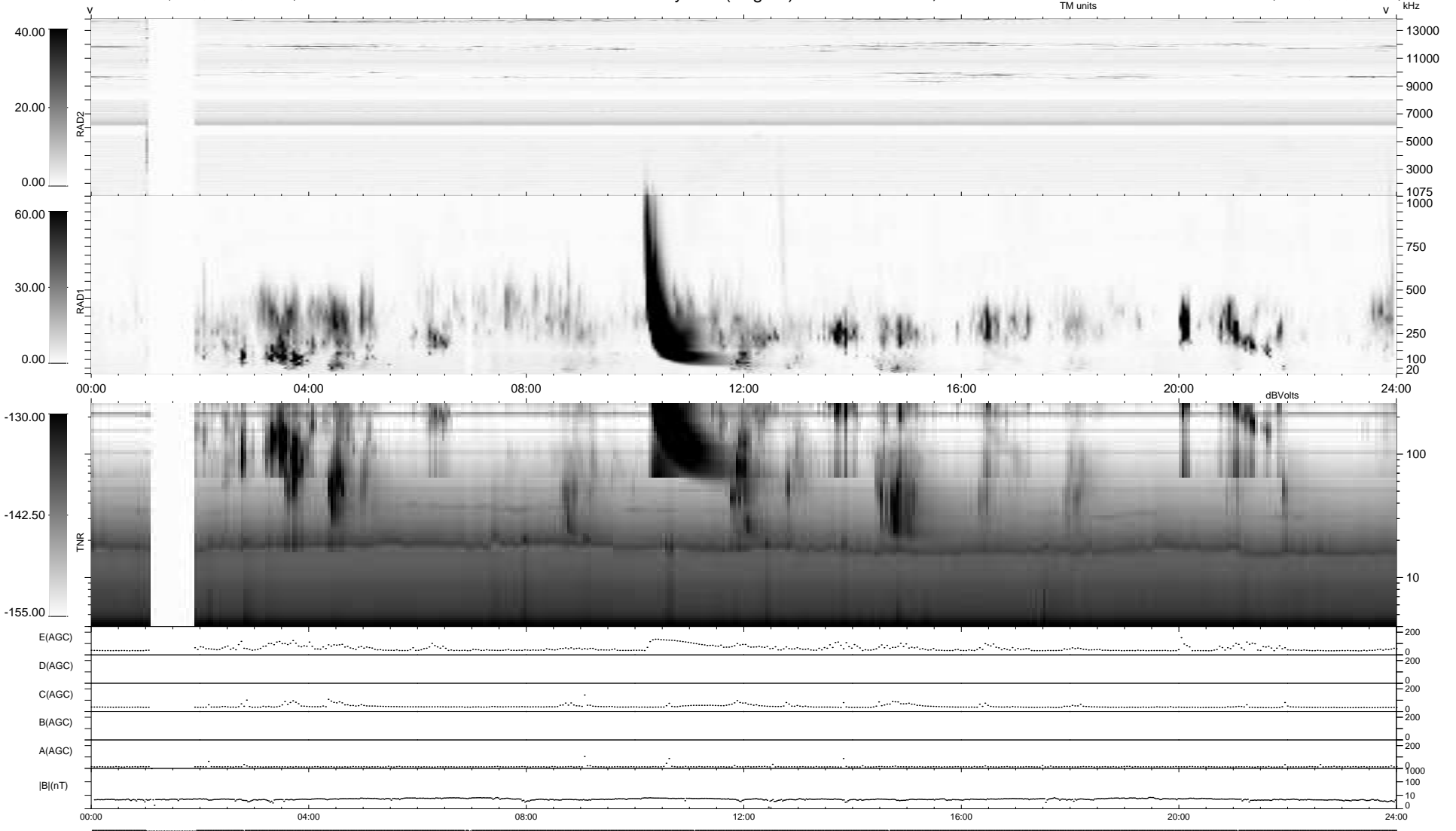


43 bad + 896 good MF/939MF projected (95%) - 0 missing MFs
 Avg interval = 180 secs
 Re = -249.27 (233.31, -87.17, 9.94 GSE)

1.7d VMS-SunOS LZ version = v01
 DAILY Mon May 10, 2010
 Re = 248.62 (232.04, -88.80, 9.27 GSE)

WIND/WAVES Summary Plot (Page 1) for 30-JAN-2007, DOY = 30



```

RAD2
Antenna Ey .....
Mode LIN(1) .....
SUM/SEP SEP .....
Toggle OFF .....

RAD1
Antenna Ex .....
Mode LIS(2,4) .....
SUM/SEP SUM .....
Toggle OFF .....

TNR
Antenna ExEy .....
Mode A-32 .....
Sweep ACE .....
  
```