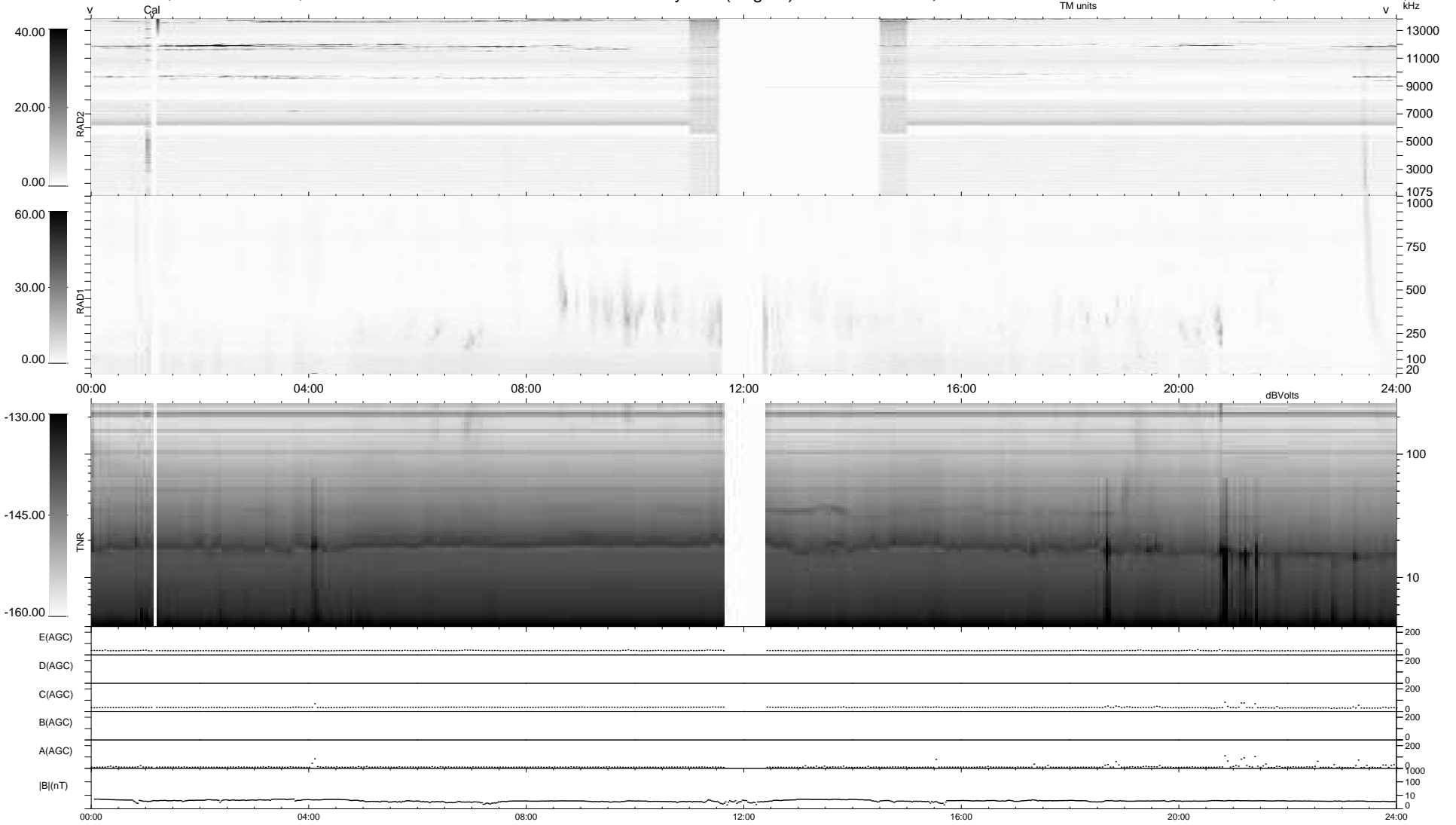


39 bad + 900 good MF/939MF projected (95%) - 0 missing MFs
 Avg interval = 180 secs
 Re = -254.16 (243.49, -71.34, 14.83 GSE)

1.7d VMS-SunOS LZ version = v01
 DAILY Mon May 10, 2010
 Re = 253.64 (242.32, -73.53, 14.27 GSE)

WIND/WAVES Summary Plot (Page 1) for 22-JAN-2007, DOY = 22



```

RAD2
Antenna Ey .....
Mode LIN(1) .....
SUM/SEP SEP .....
Toggle OFF .....
RAD1
Antenna Ex .....
Mode LIS(2,4) .....
SUM/SEP SUM .....
Toggle OFF .....
TNR
Antenna ExEy .....
Mode A-32 .....
Sweep ACE .....
  
```