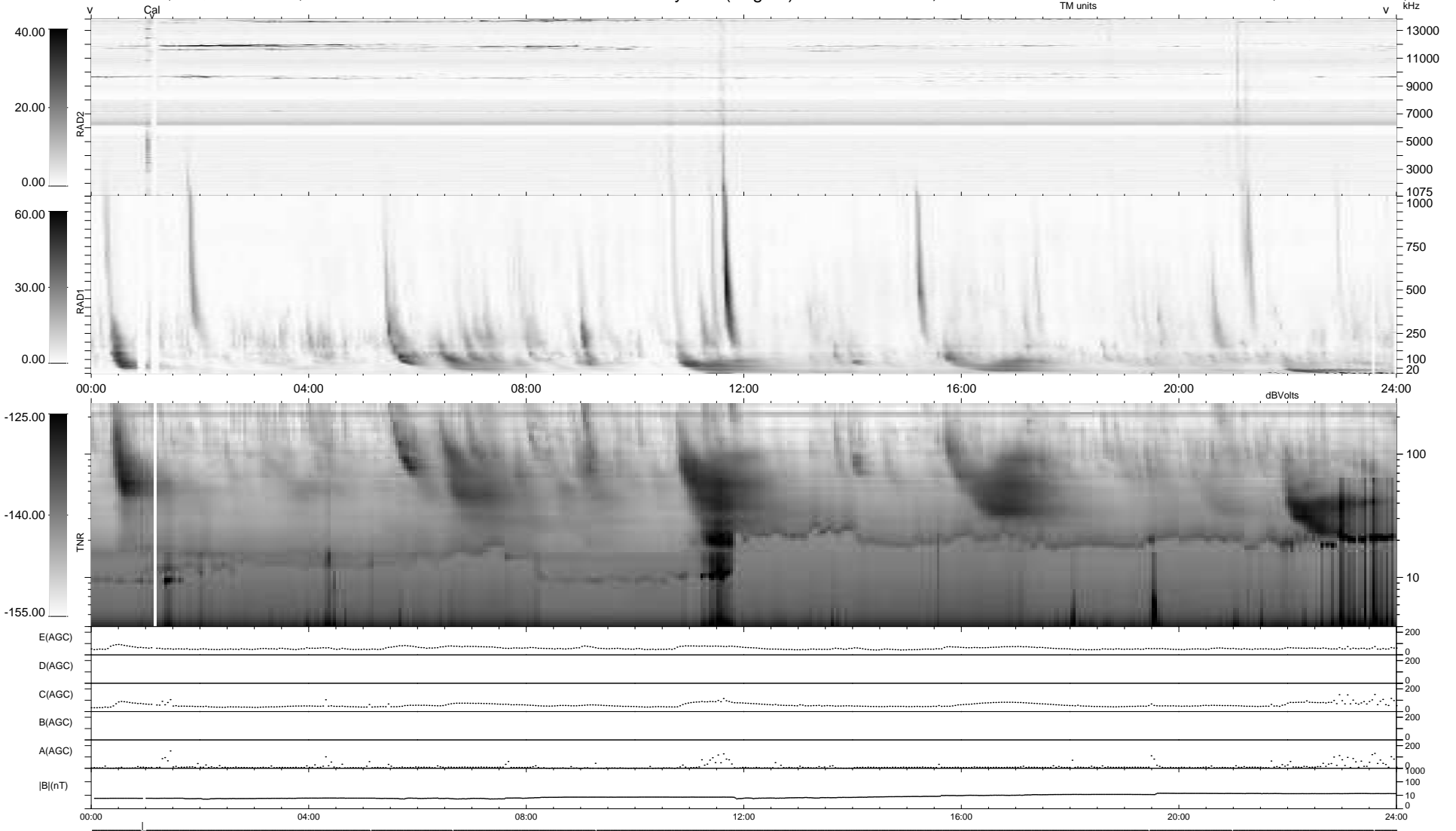


9 bad + 929 good MF/939MF projected (98%) - 1 missing MF
 Avg interval = 180 secs
 Re = -256.43 (250.63, -50.88, 18.75 GSE)

1.7d VMS-SunOS LZ version = v02
 DAILY Mon May 10, 2010
 Re = 256.33 (249.97, -53.72, 18.32 GSE)

WIND/WAVES Summary Plot (Page 1) for 14-JAN-2007, DOY = 14



RAD2
 Antenna Ey
 Mode LIN(1)
 SUM/SEP SEP
 Toggle OFF

RAD1
 Antenna Ex
 Mode LIS(2,4)
 SUM/SEP SUM
 Toggle OFF

TNR
 Antenna ExEy
 Mode A-32
 Sweep ACE