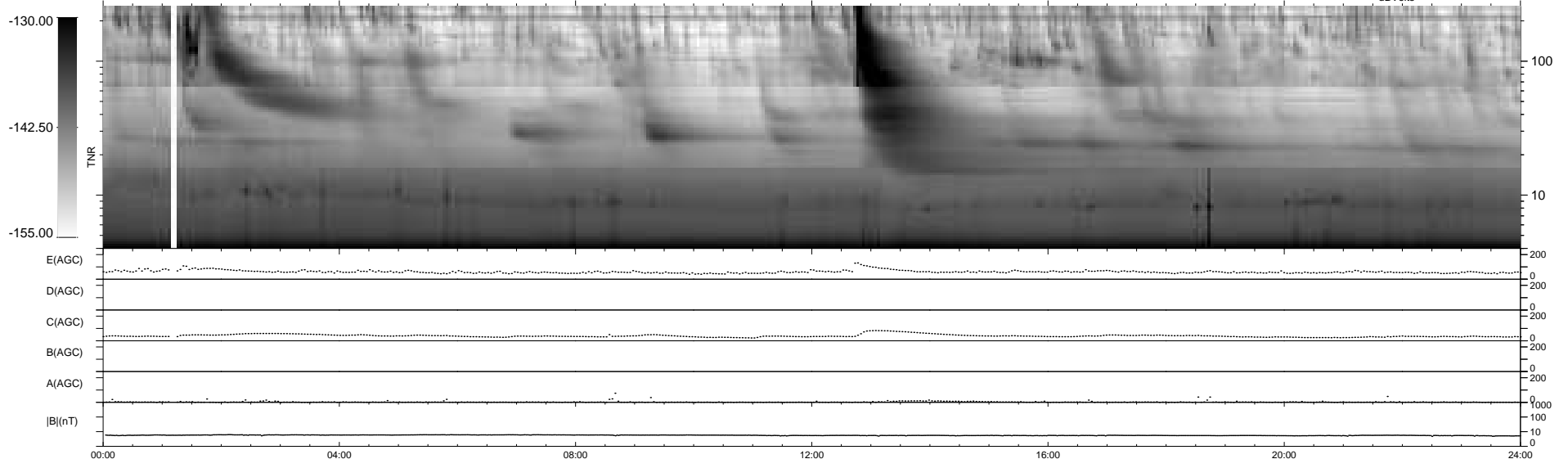
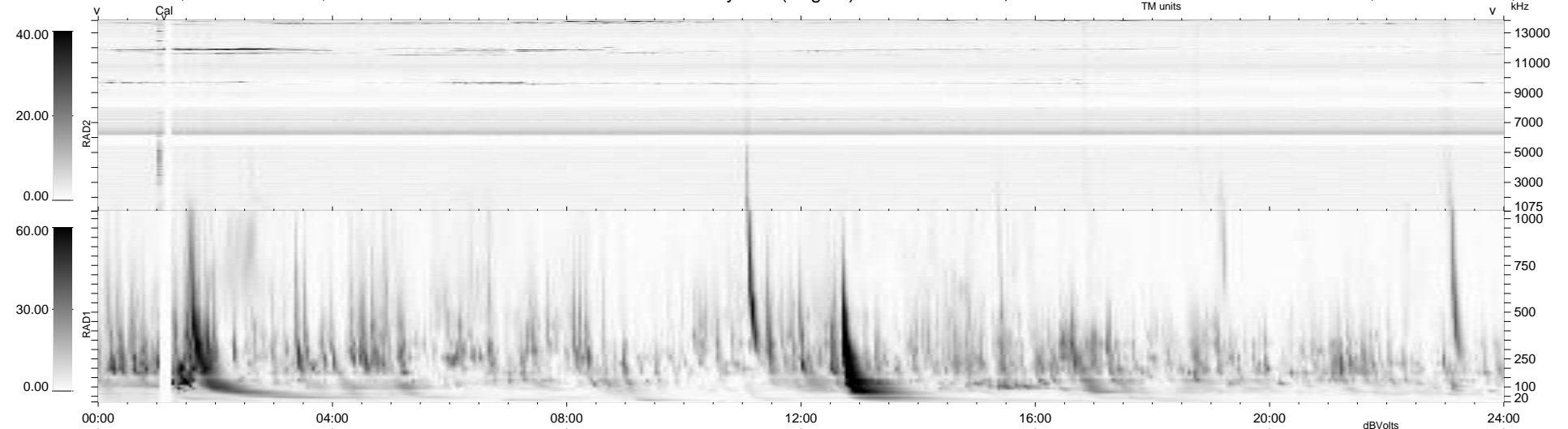


6 bad + 933 good MF/939MF projected (99%) - 0 missing MFs  
 Avg interval = 180 secs  
 Re = -256.53 (251.81, -44.89, 19.58 GSE)

1.7d VMS-SunOS LZ version = v02  
 DAILY Mon May 10, 2010  
 Re = 256.50 (251.25, -47.91, 19.18 GSE)

### WIND/WAVES Summary Plot (Page 1) for 12-JAN-2007, DOY = 12



```

RAD2
Antenna Ey .....
Mode LIN(1) .....
SUM/SEP SEP .....
Toggle OFF .....

RAD1
Antenna Ex .....
Mode LIS(2,4) .....
SUM/SEP SUM .....
Toggle OFF .....

TNR
Antenna ExEy .....
Mode A-32 .....
Sweep ACE .....
  
```