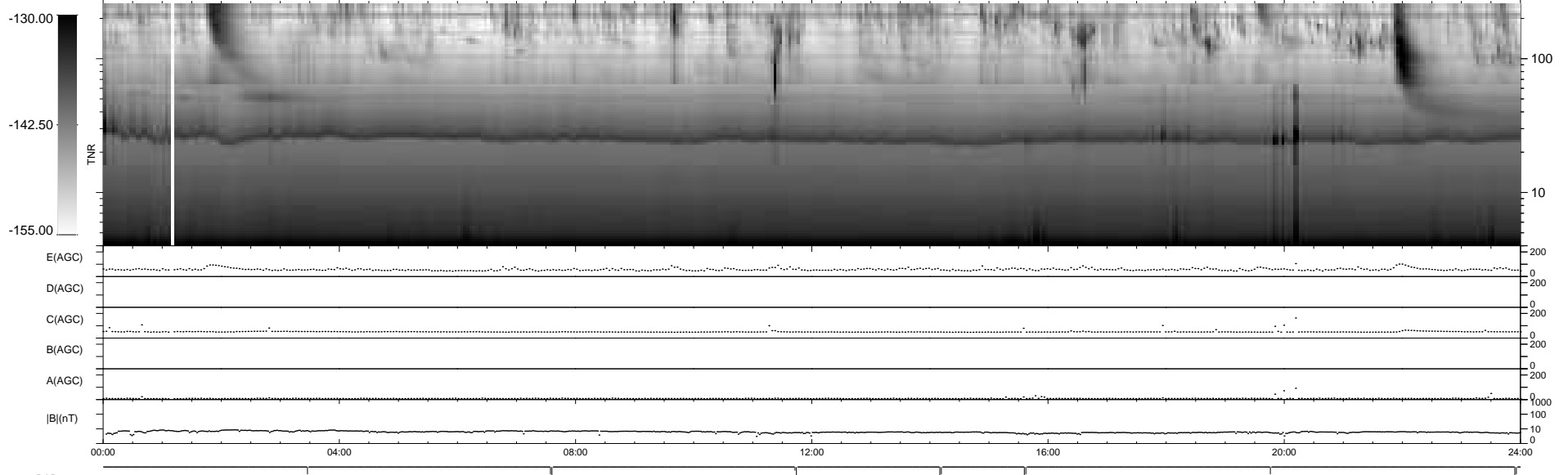
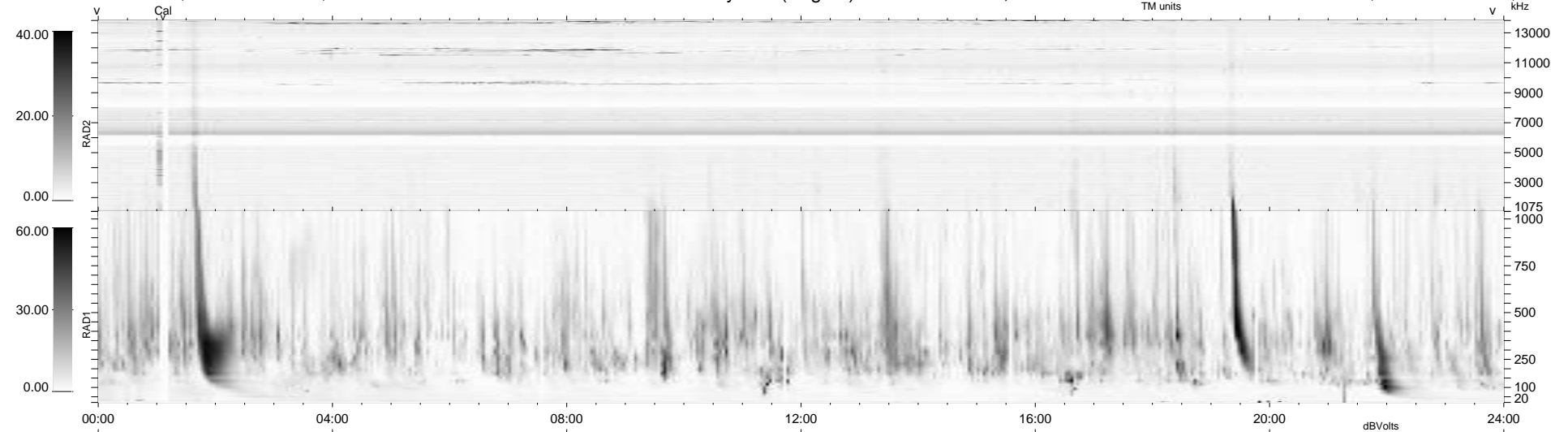


12 bad + 927 good MF/939MF projected (98%) - 0 missing MFs
 Avg interval = 180 secs
 Re = 256.53 (252.80, -38.56, 20.34 GSE)

1.7d VMS-SunOS LZ version = v01
 DAILY Mon May 10, 2010
 Re = 256.54 (252.33, -41.74, 19.97 GSE)

WIND/WAVES Summary Plot (Page 1) for 10-JAN-2007, DOY = 10



RAD2
 Antenna Ey
 Mode LIN(1)
 SUM/SEP SEP
 Toggle OFF

RAD1
 Antenna Ex
 Mode LIS(2,4)
 SUM/SEP SUM
 Toggle OFF

TNR
 Antenna ExEy
 Mode A-32
 Sweep ACE