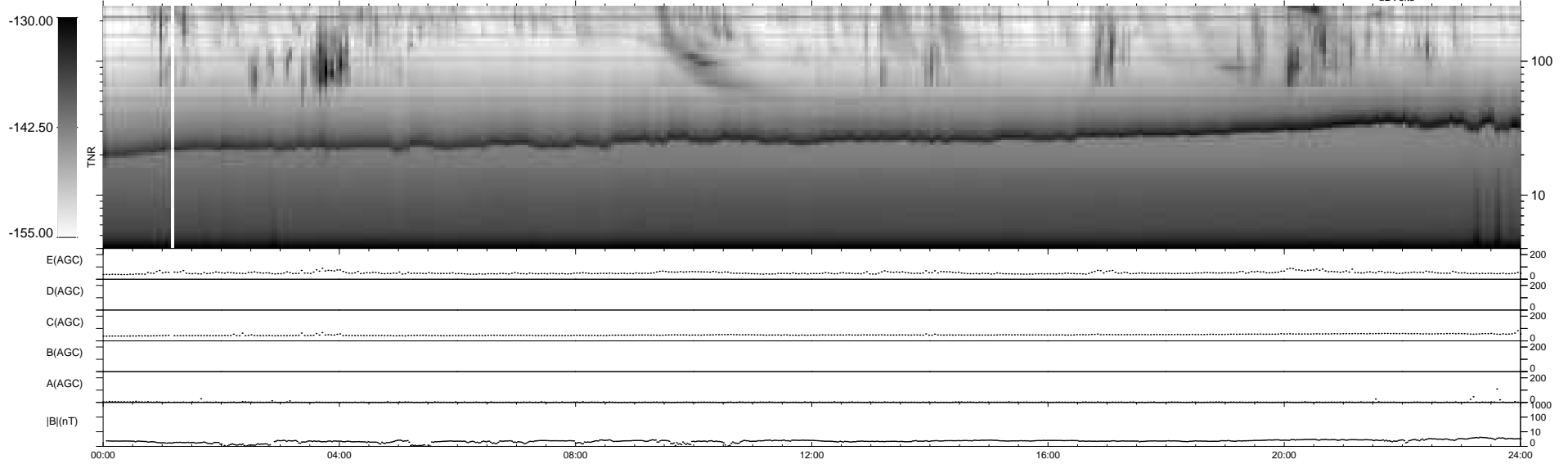
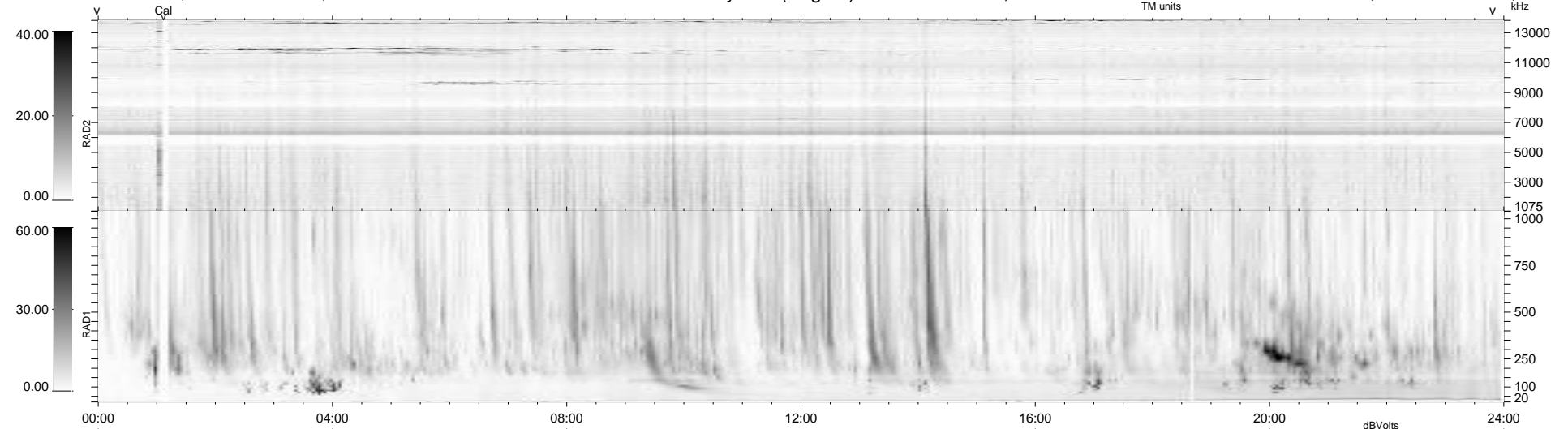


10 bad + 929 good MF/939MF projected (98%) - 0 missing MFs  
 Avg interval = 180 secs  
 Re = -256.49 (253.62, -31.92, 21.02 GSE)

1.7d VMS-SunOS LZ version = v01  
 DAILY Mon May 10, 2010  
 Re = 256.51 (253.23, -35.25, 20.69 GSE)

WIND/WAVES Summary Plot (Page 1) for 08-JAN-2007, DOY = 8



RAD2  
 Antenna Ey .....  
 Mode LIN(1) .....  
 SUM/SEP SEP .....  
 Toggle OFF .....  
 RAD1  
 Antenna Ex .....  
 Mode LIS(2,4) .....  
 SUM/SEP SUM .....  
 Toggle OFF .....  
 TNR  
 Antenna ExEy .....  
 Mode A-32 .....  
 Sweep ACE .....