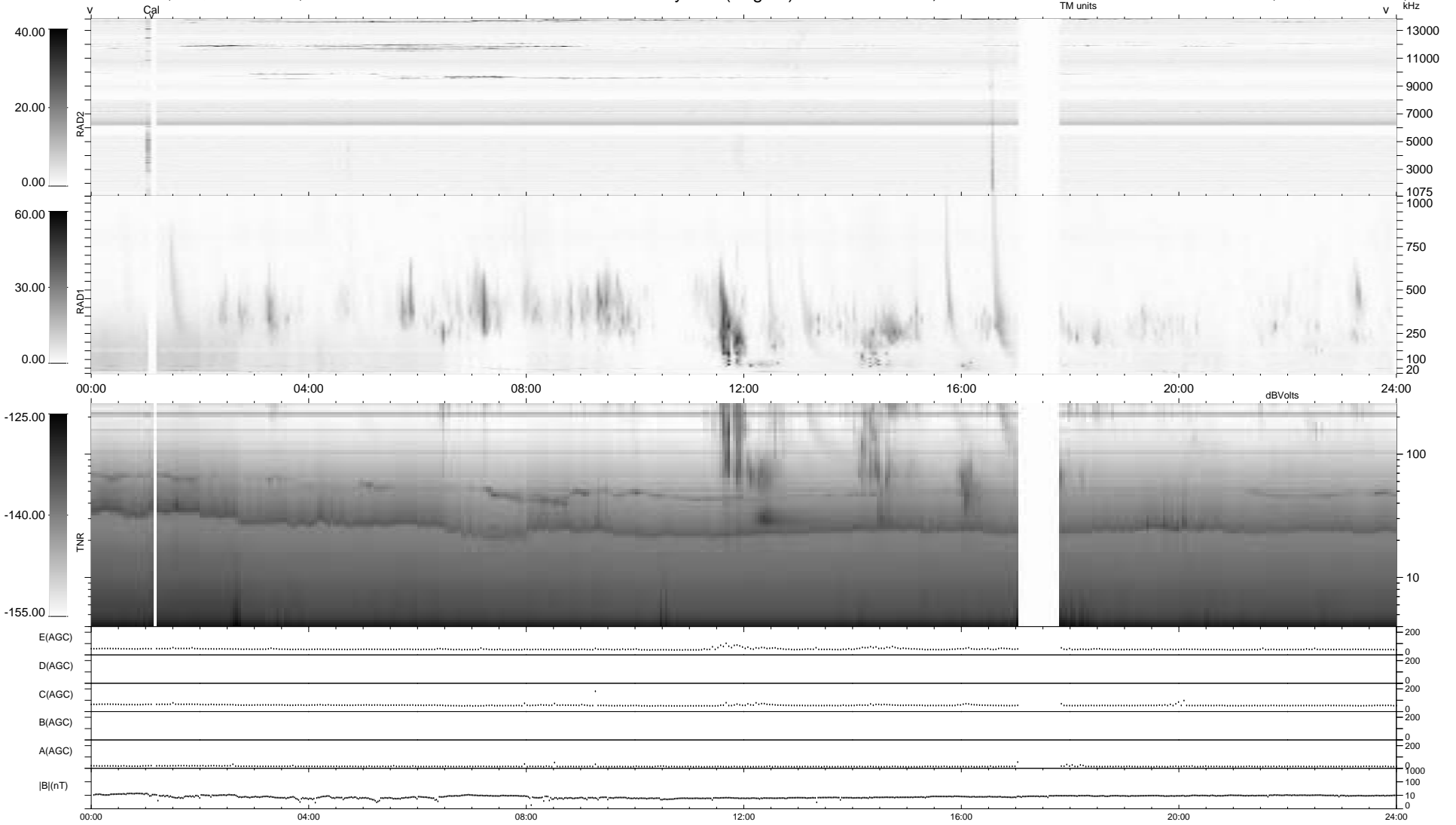


0 bad + 2 good MF/ZMF projected (100%) - 0 missing MFs  
 Avg interval = 180 secs  
 Re = -256.66 (255.45, -10.79, 22.51 GSE)

1.7d VMS-SunOS LZ version = v01  
 DAILY Thu Aug 28, 2008  
 Re = 256.58 (255.20, -14.36, 22.32 GSE)

### WIND/WAVES Summary Plot (Page 1) for 02-JAN-2007, DOY = 2



```

RAD2
Antenna Ey .....
Mode LIN(1) .....
SUM/SEP SEP .....
Toggle OFF .....

RAD1
Antenna Ex .....
Mode LIS(2/4) .....
SUM/SEP SUM .....
Toggle OFF .....

TNR
Antenna ExEy .....
Mode A-32 .....
Sweep ACE .....
  
```