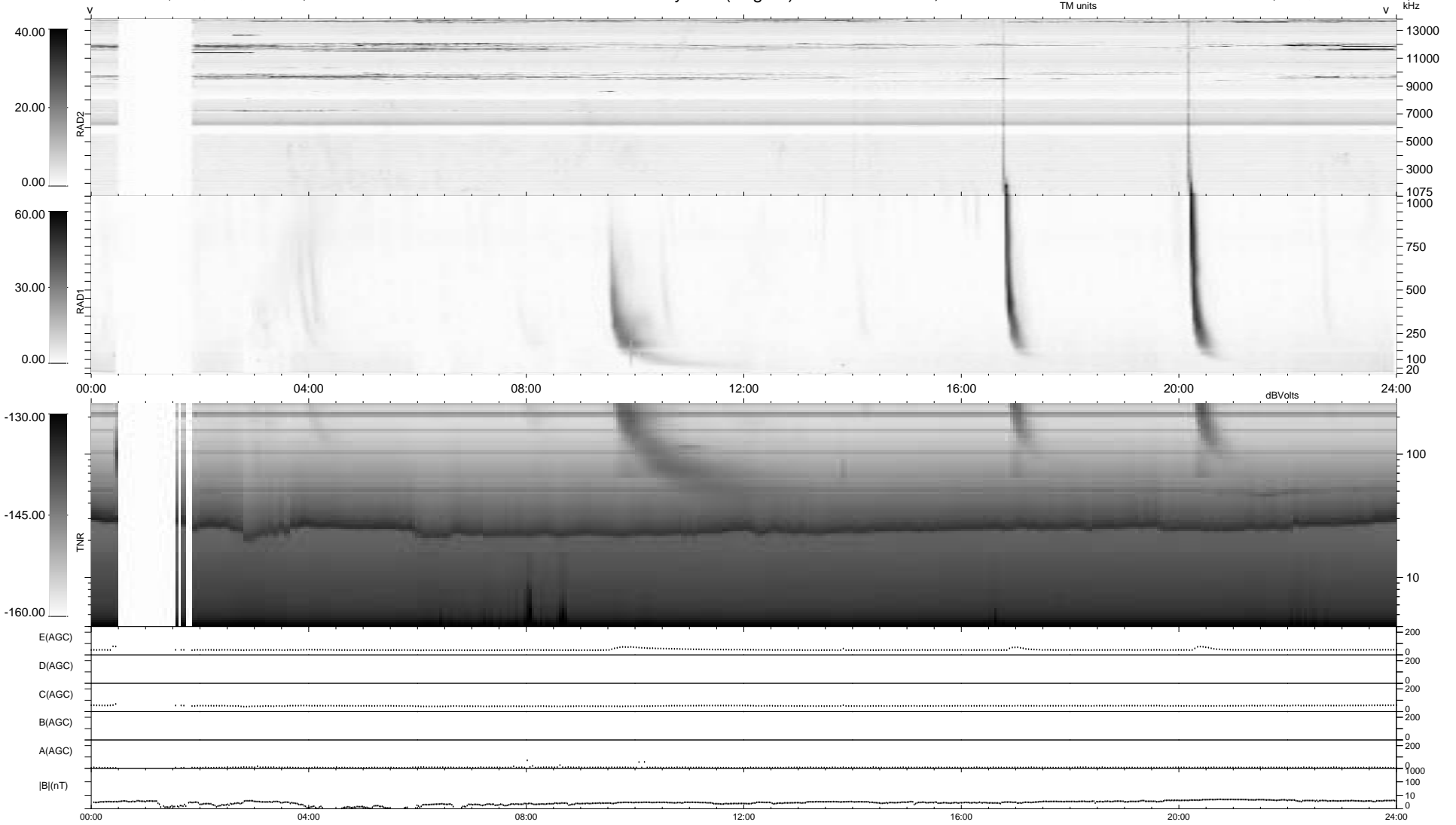


0 bad + 2 good MF/ZMF projected (100%) - 0 missing MFs
 Avg interval = 180 secs
 Re = 220.27 (205.46, -78.38, -12.76 GSE)

1.7d VMS-SunOS LZ version = v01
 DAILY Fri Aug 29, 2008
 Re = 219.05 (204.91, -76.27, -13.27 GSE)

WIND/WAVES Summary Plot (Page 1) for 09-SEP-2006, DOY = 252



RAD2
 Antenna Ey
 Mode LIN(1)
 SUM/SEP SEP
 Toggle OFF
 RAD1
 Antenna Ex
 Mode LIS(2/4)
 SUM/SEP SUM
 Toggle OFF
 TNR
 Antenna ExEy
 Mode A-32
 Sweep ACE