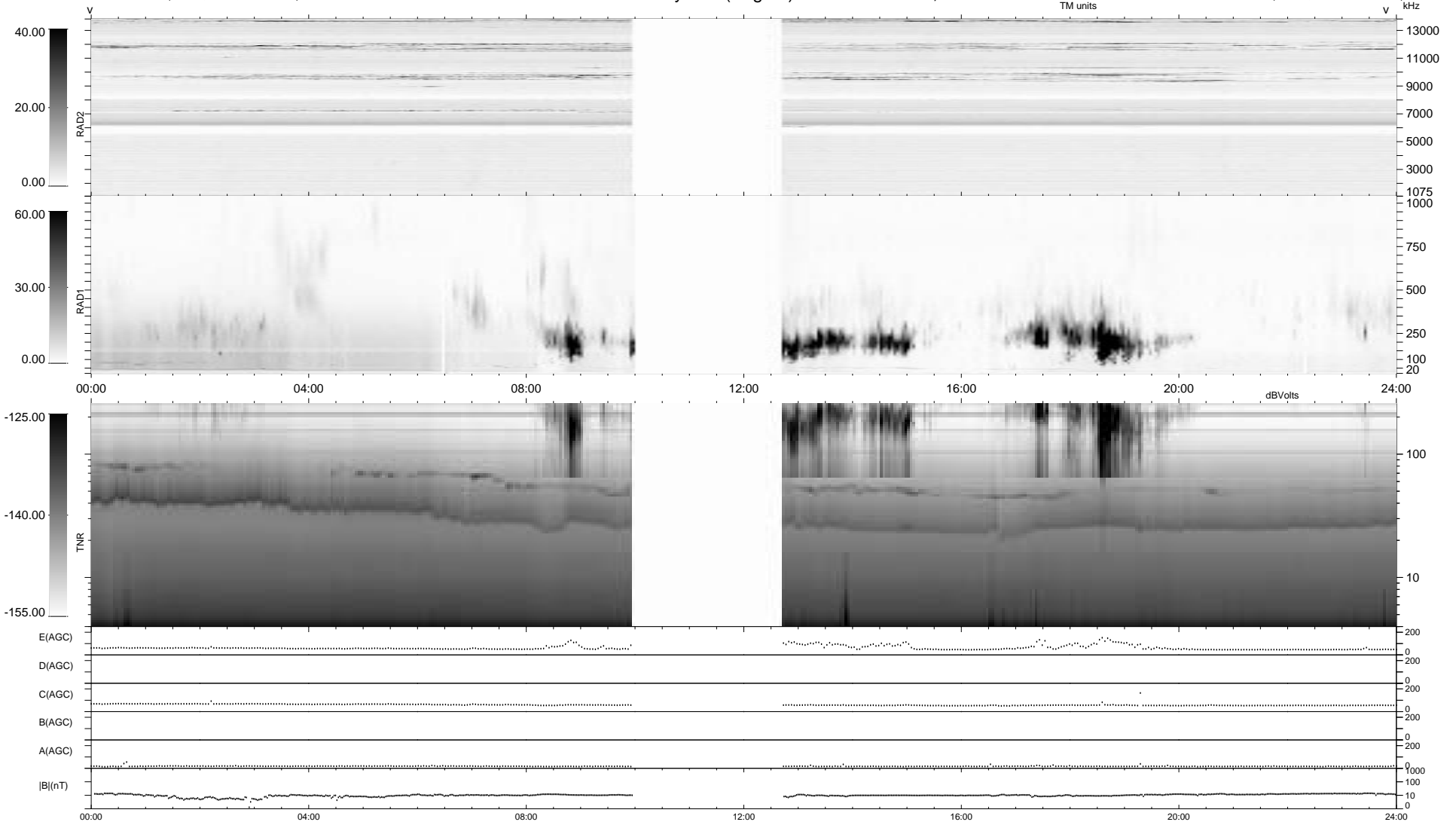


0 bad + 2 good MF/ZMF projected (100%) - 0 missing MFs
 Avg interval = 180 secs
 Re = - 265.84 (263.72, 24.30, 23.04 GSE)

1.7d VMS-SunOS LZ version = v01
 DAILY Thu Aug 28, 2008
 Re = 265.84 (263.99, 21.16, 23.05 GSE)

WIND/WAVES Summary Plot (Page 1) for 28-JUN-2006, DOY = 179



RAD2
 Antenna Ey
 Mode LIN(1)
 SUM/SEP SEP
 Toggle OFF
 RAD1
 Antenna Ex
 Mode LIS(2,4)
 SUM/SEP SUM
 Toggle OFF
 TNR
 Antenna ExEy
 Mode A-32
 Sweep ACE