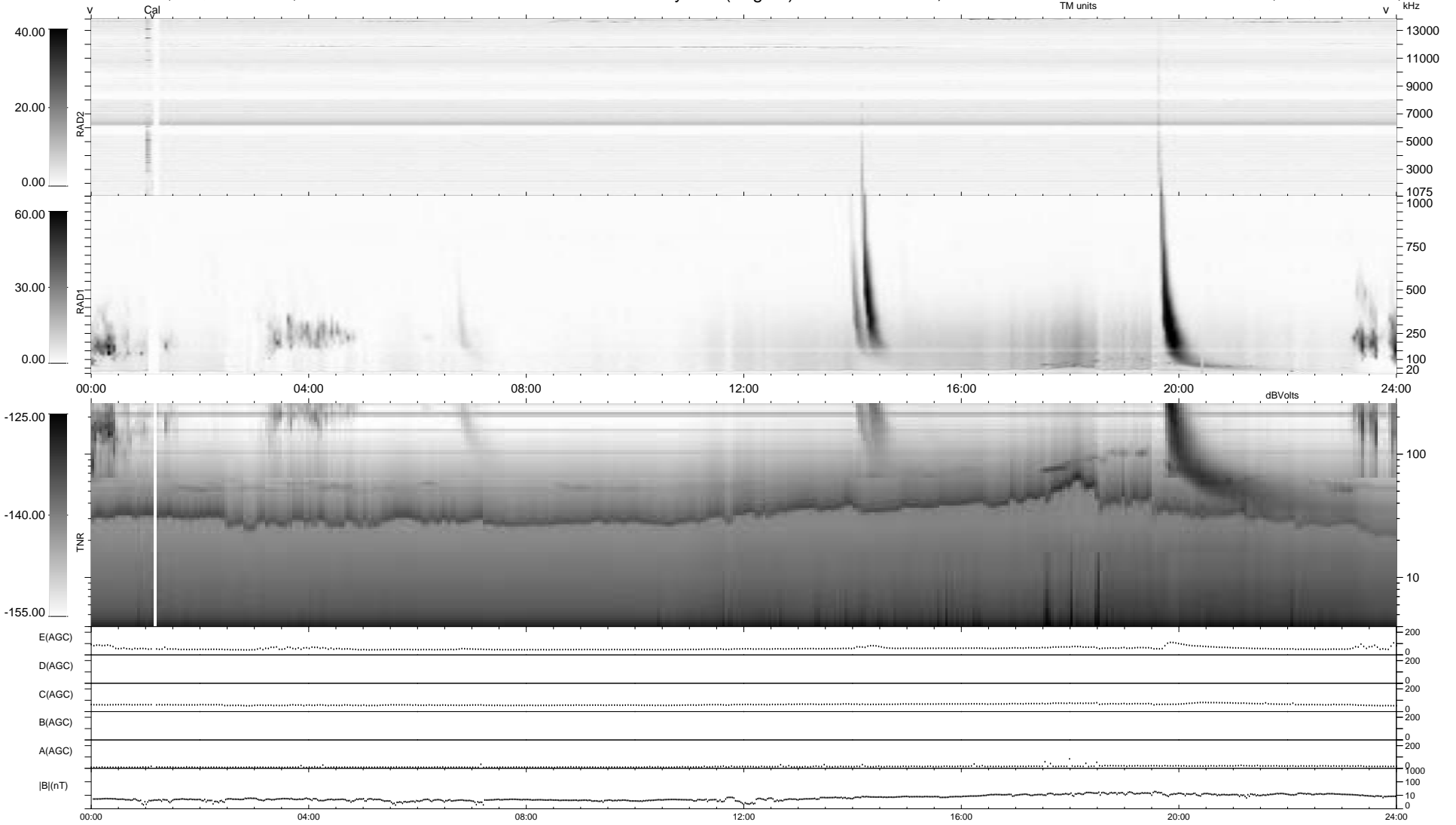


0 bad + 2 good MF/ZMF projected (100%) - 0 missing MFs
 Avg interval = 180 secs
 Re = - 212.23 (201.33, 66.58, -8.71 GSE)

1.7d VMS-SunOS LZ version = v01
 DAILY Tue Sep 2, 2008
 Re = 213.44 (201.70, 69.36, -8.10 GSE)

WIND/WAVES Summary Plot (Page 1) for 02-NOV-2005, DOY = 306



RAD2
 Antenna Ey
 Mode LIN(1)
 SUM/SEP SEP
 Toggle OFF
 RAD1
 Antenna Ex
 Mode LIS(2,4)
 SUM/SEP SUM
 Toggle OFF
 TNR
 Antenna ExEy
 Mode A-32
 Sweep ACE