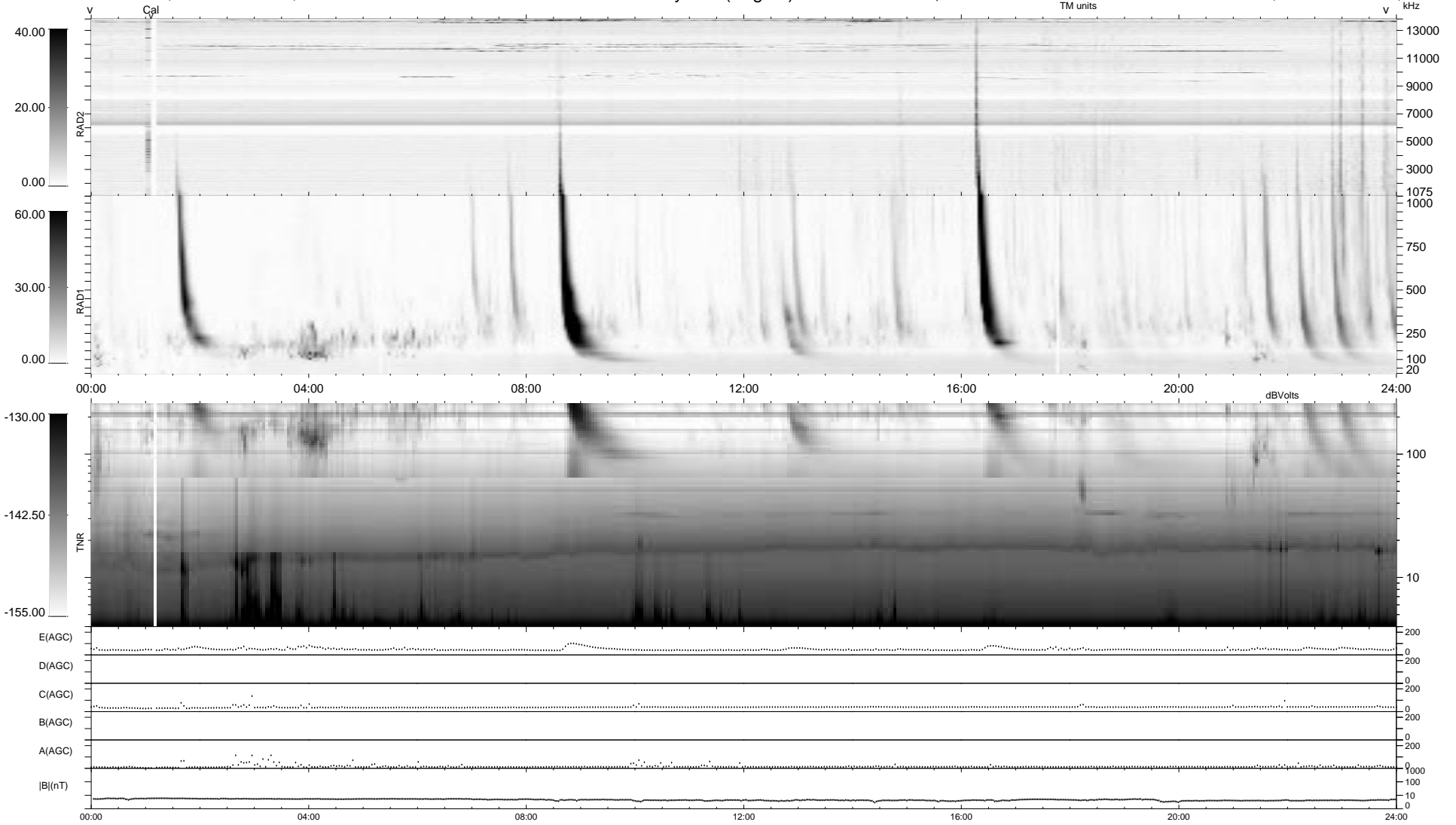


0 bad + 2 good MF/ZMF projected (100%) - 0 missing MFs
 Avg interval = 180 secs
 Re = 199.94 (199.28, 1.94, -16.19 GSE)

1.7d VMS-SunOS LZ version = v01
 DAILY Tue Sep 2, 2008
 Re = 199.94 (199.21, 5.67, -16.00 GSE)

WIND/WAVES Summary Plot (Page 1) for 16-APR-2005, DOY = 106



```

RAD2
Antenna Ey .....
Mode LIN(1) .....
SUM/SEP SEP .....
Toggle OFF .....

RAD1
Antenna Ex .....
Mode LIS(2/4) .....
SUM/SEP SUM .....
Toggle OFF .....

TNR
Antenna ExEy .....
Mode A-32 .....
Sweep ACE .....
  
```