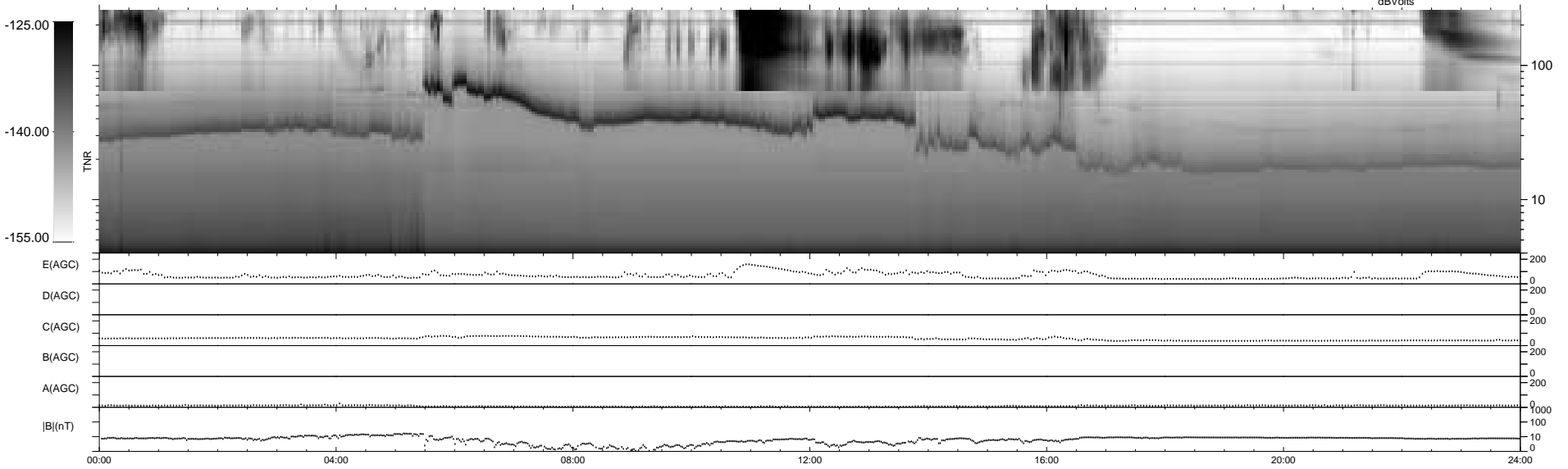
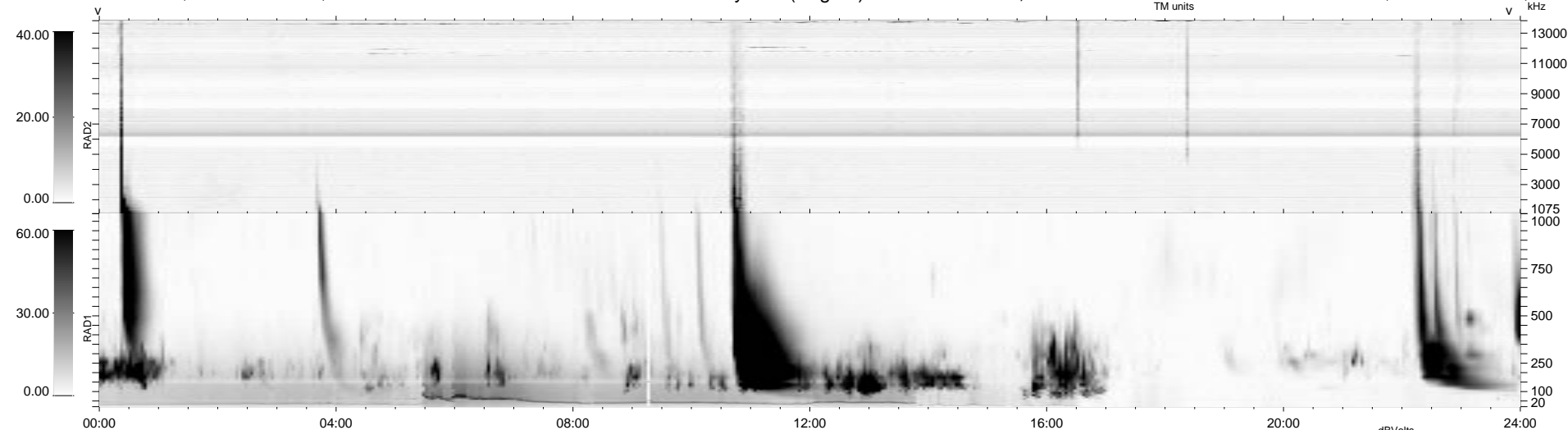


0 bad + 2 good MF/ZMF projected (100%) - 0 missing MFs  
 Avg interval = 180 secs  
 Re = -254.65 (246.49, 61.18, 18.56 GSE)

1.7d VMS-SunOS LZ version = v01  
 DAILY Thu Sep 4, 2008  
 Re = 254.98 (247.51, 58.32, 18.76 GSE)

WIND/WAVES Summary Plot (Page 1) for 30-DEC-2004, DOY = 365



RAD2  
 Antenna Ey .....  
 Mode LIN(1) .....  
 SUM/SEP SEP .....  
 Toggle OFF .....  
 RAD1  
 Antenna Ex .....  
 Mode LIS(2/4) .....  
 SUM/SEP SUM .....  
 Toggle OFF .....  
 TNR  
 Antenna ExEy .....  
 Mode A-32 .....  
 Sweep ACE .....