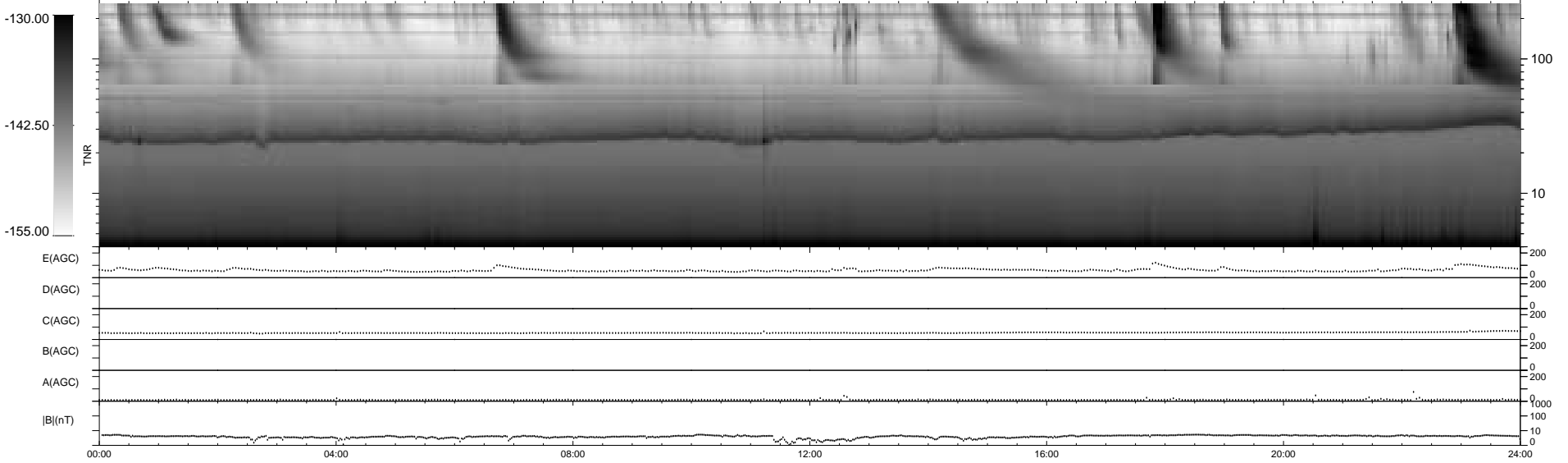
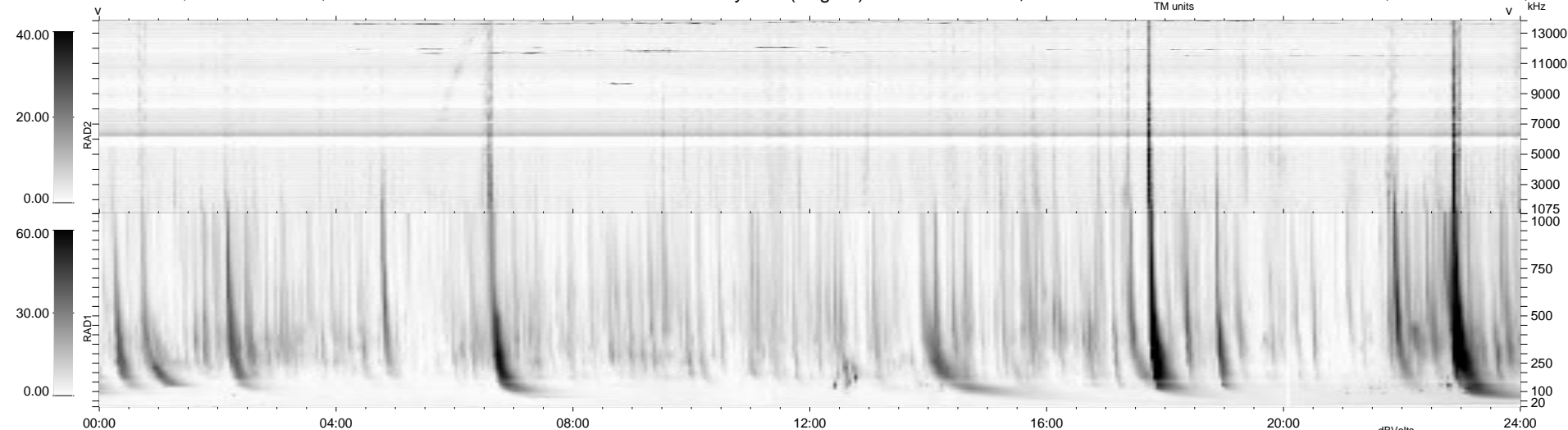


0 bad + 2 good MF/ZMF projected (100%) - 0 missing MFs
 Avg interval = 180 secs
 Re = 251.47 (236.05, 85.32, 15.33 GSE)

1.7d VMS-SunOS LZ version = v01
 DAILY Thu Sep 4, 2008
 Re = 251.83 (237.09, 83.42, 15.73 GSE)

WIND/WAVES Summary Plot (Page 1) for 20-DEC-2004, DOY = 355



RAD2
 Antenna Ey
 Mode LIN(1)
 SUM/SEP SEP
 Toggle OFF

RAD1
 Antenna Ex
 Mode LIS(2/4)
 SUM/SEP SUM
 Toggle OFF

TNR
 Antenna ExEy
 Mode A-32
 Sweep ACE