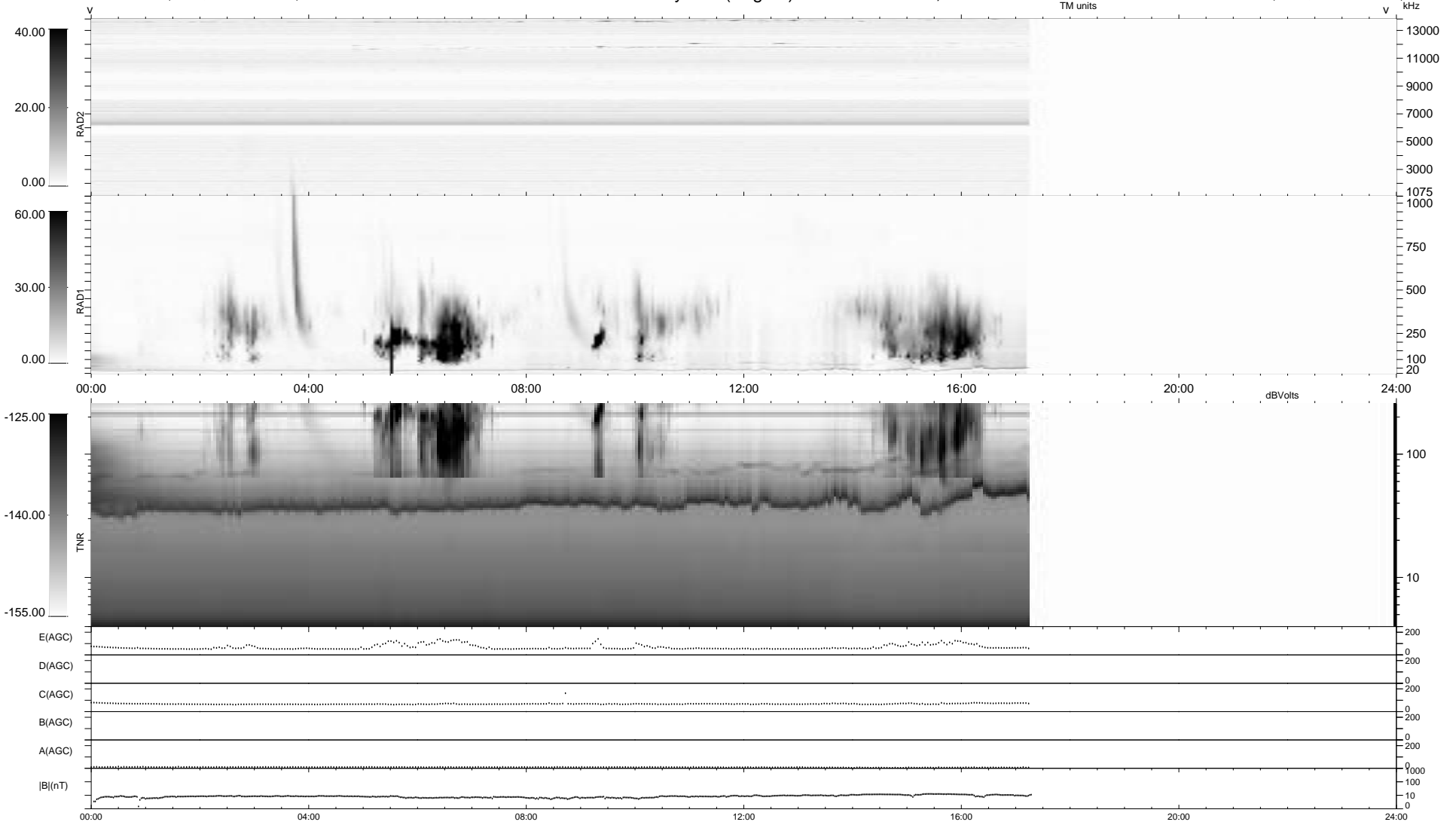


0 bad + 2 good MF/ZMF projected (100%) - 0 missing MFs
 Avg interval = 180 secs
 Re = -246.75 (227.18, 95.59, 11.61 GSE)

1.7d VMS-SunOS LZ version = v01
 DAILY Thu Sep 4, 2008
 Re = 247.57 (228.38, 94.79, 12.11 GSE)

WIND/WAVES Summary Plot (Page 1) for 12-DEC-2004, DOY = 347



RAD2
 Antenna Ey
 Mode LIN(1)
 SUM/SEP SEP
 Toggle OFF
 RAD1
 Antenna Ex
 Mode LIS(2/4)
 SUM/SEP SUM
 Toggle OFF
 TNR
 Antenna ExEy
 Mode A-32
 Sweep ACE