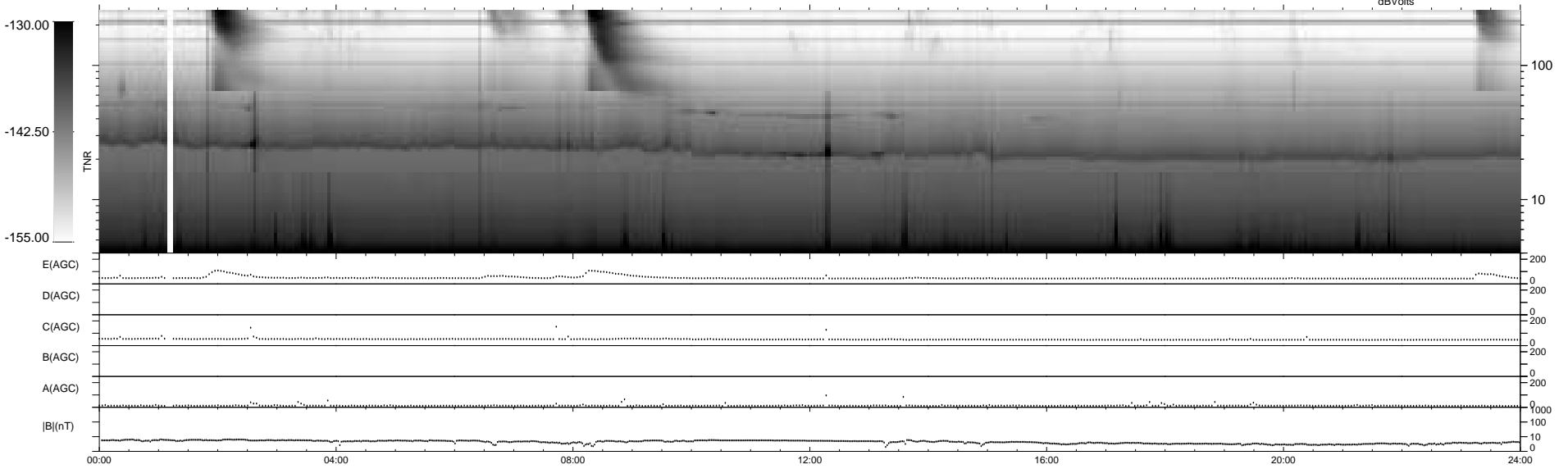
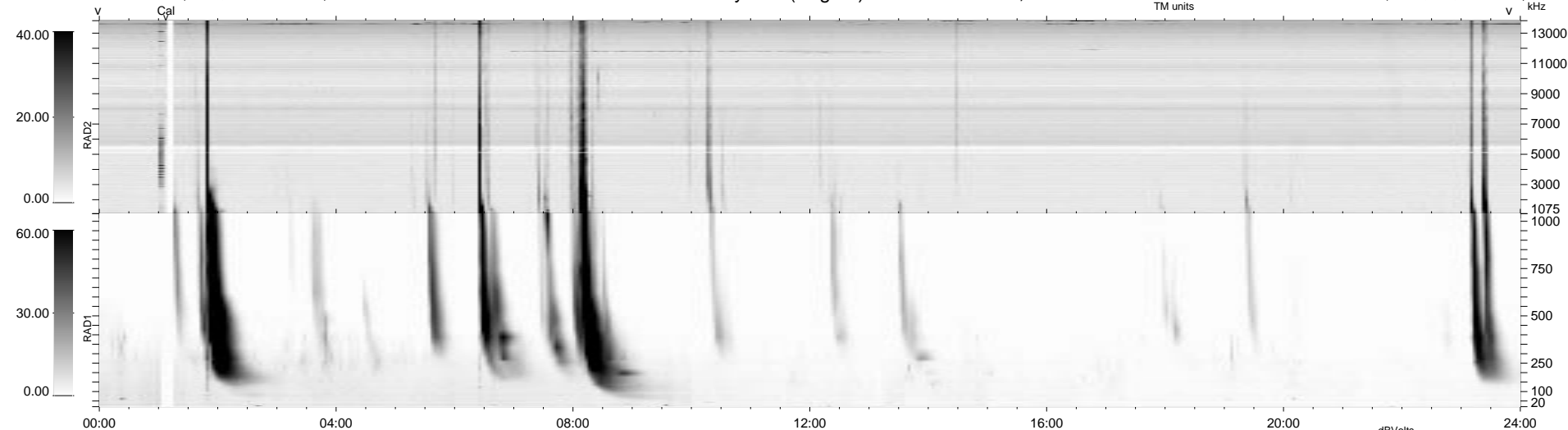


0 bad + 2 good MF/ZMF projected (100%) - 0 missing MFs  
 Avg interval = 180 secs  
 Re = 197.72 (197.08, -3.40, -15.55 GSE)

1.7d VMS-SunOS LZ version = v01  
 DAILY Thu Sep 4, 2008  
 Re = 197.47 (196.87, 0.31, -15.37 GSE)

WIND/WAVES Summary Plot (Page 1) for 22-OCT-2004, DOY = 296



E(AGC) 0 200  
 D(AGC) 0 200  
 C(AGC) 0 200  
 B(AGC) 0 200  
 A(AGC) 0 200  
 |B|(nT) 0 1000 10 0

00:00 04:00 08:00 12:00 16:00 20:00 24:00

RAD2  
 Antenna Ey  
 Mode LIN(1)  
 SUM/SEP SUM  
 Toggle OFF

RAD1  
 Antenna Ex  
 Mode LIS(2,3)  
 SUM/SEP SUM  
 Toggle OFF

TNR  
 Antenna ExEy  
 Mode A-32  
 Sweep ACE