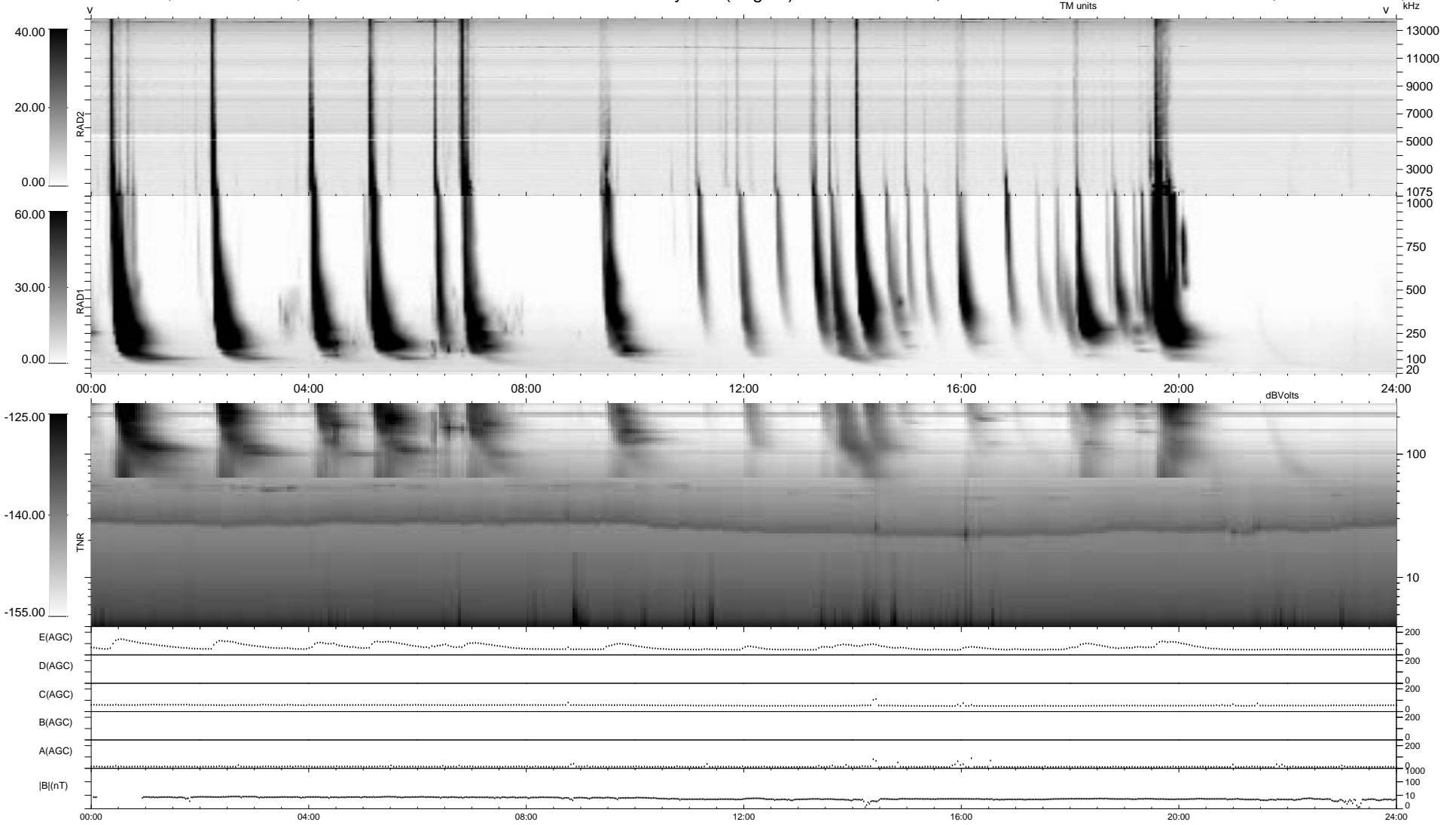


0 bad + 2 good MF/ZMF projected (100%) - 0 missing MFs
 Avg interval = 180 secs
 Re = 198.07 (197.31, -7.16, -15.70 GSE)

1.7d VMS-SunOS LZ version = v01
 DAILY Thu Sep 4, 2008
 Re = 197.72 (197.08, -3.42, -15.56 GSE)

WIND/WAVES Summary Plot (Page 1) for 21-OCT-2004, DOY = 295



```

RAD2
Antenna Ey .....
Mode LIN(1) .....
SUM/SEP SUM .....
Toggle OFF .....

RAD1
Antenna Ex .....
Mode LIS(2,3) .....
SUM/SEP SUM .....
Toggle OFF .....

TNR
Antenna ExEy .....
Mode A-32 .....
Sweep ACE .....
  
```