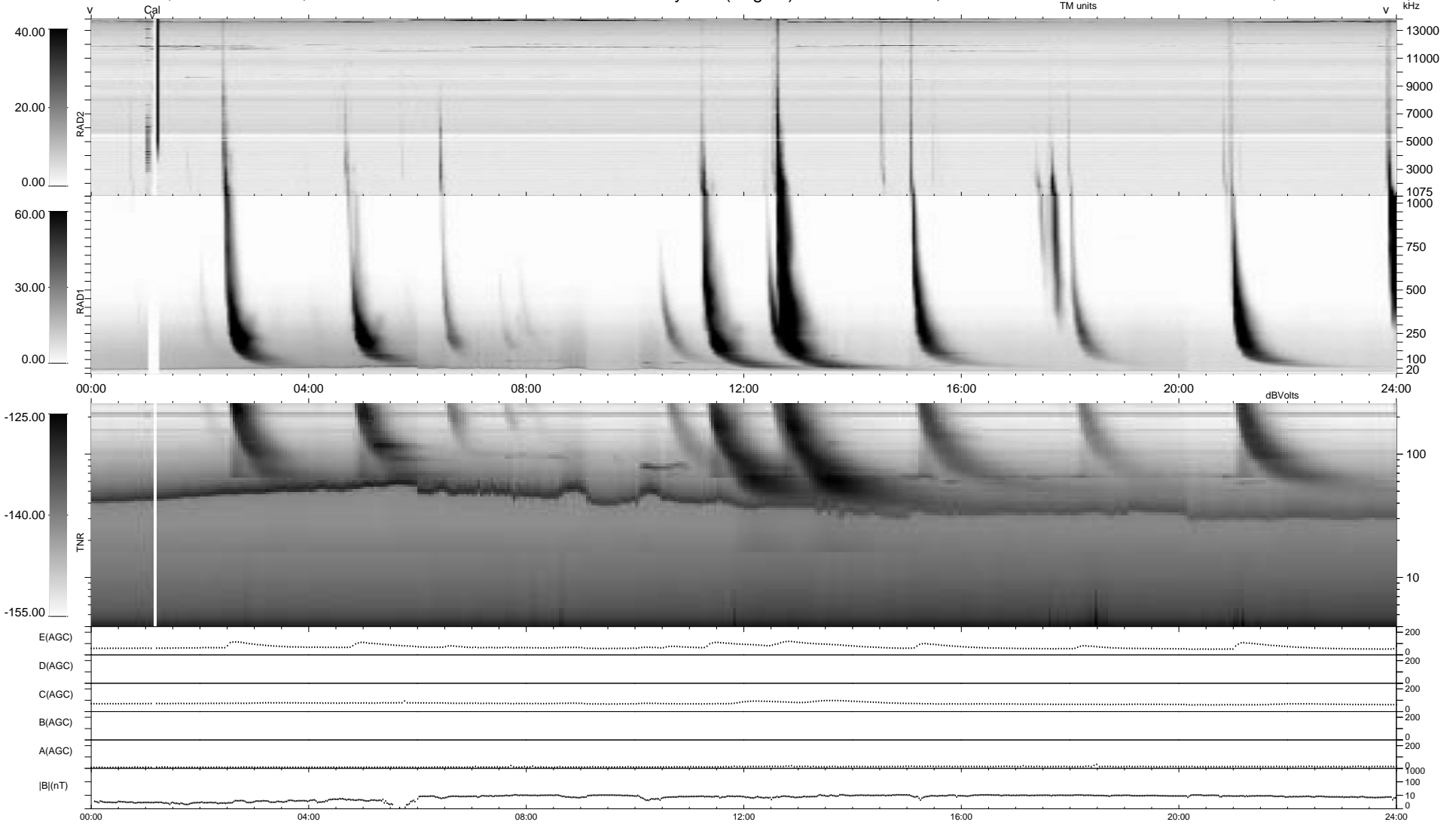


0 bad + 2 good MF/ZMF projected (100%) - 0 missing MFs  
 Avg interval = 180 secs  
 Re = -207.95 (200.15, -54.41, -14.96 GSE)

1.7d VMS-SunOS LZ version = v01  
 DAILY Thu Sep 4, 2008  
 Re = 206.96 (199.96, -51.20, -15.17 GSE)

### WIND/WAVES Summary Plot (Page 1) for 08-OCT-2004, DOY = 282



RAD2  
 Antenna Ey  
 Mode LIN(1)  
 SUM/SEP SUM  
 Toggle OFF

RAD1  
 Antenna Ex  
 Mode LIS(2,3)  
 SUM/SEP SUM  
 Toggle OFF

TNR  
 Antenna ExEy  
 Mode A-32  
 Sweep ACE