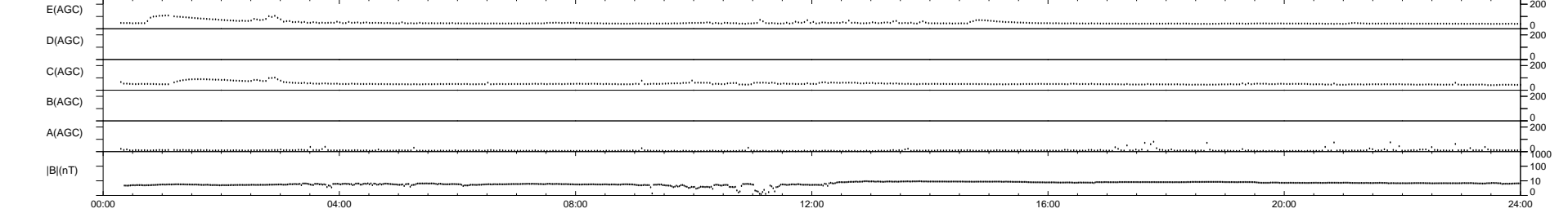
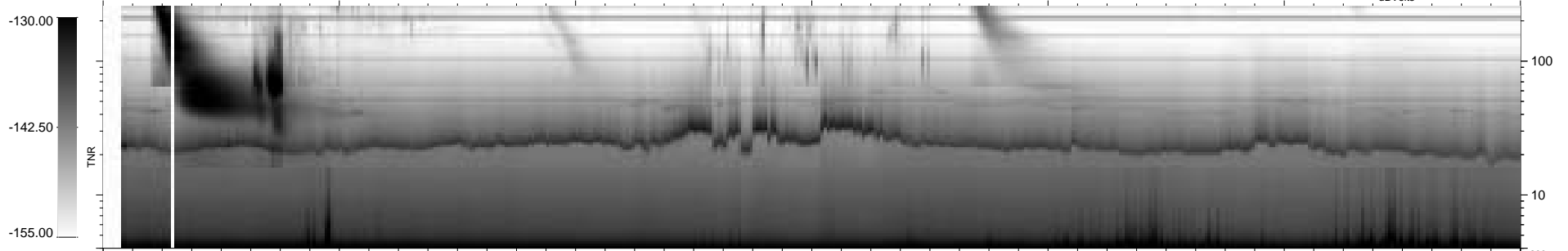
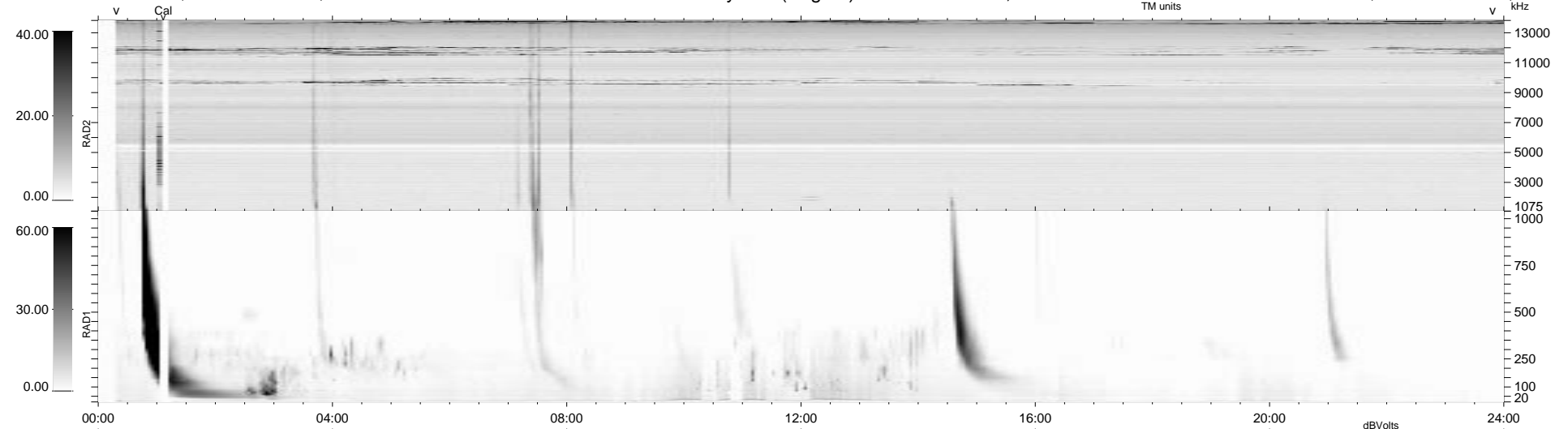


0 bad + 2 good MF/ZMF projected (100%) - 0 missing MFs  
 Avg interval = 180 secs  
 Re = 234.33 (213.62, -96.07, -6.86 GSE)

1.7d VMS-SunOS LZ version = v01

### WIND/WAVES Summary Plot (Page 1) for 18-SEP-2004, DOY = 262

DAILY Thu Sep 4, 2008  
 Re = 232.90 (212.55, -94.91, -7.41 GSE)



RAD2 Antenna Mode SUM/SEP Toggle  
 RAD1 Antenna Mode SUM/SEP Toggle  
 TNR Antenna Mode Sweep