

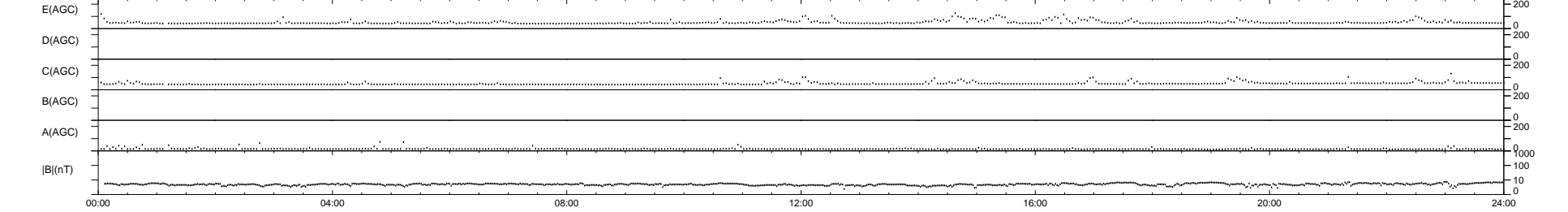
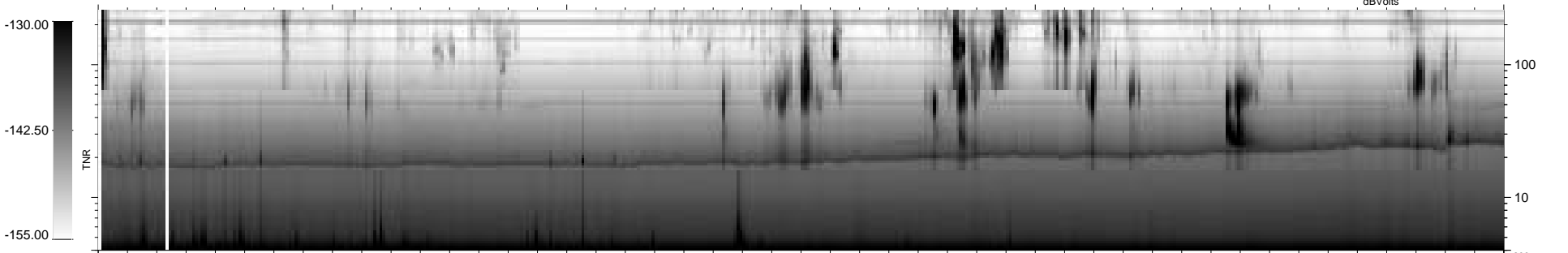
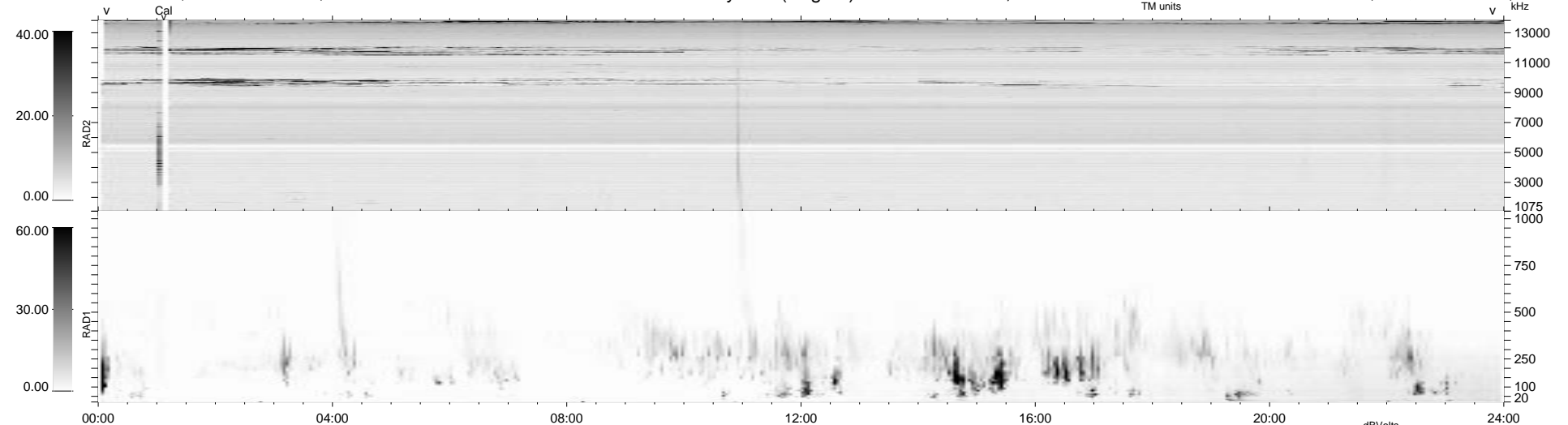
0 bad + 2 good MF/ZMF projected (100%) - 0 missing MFs
Avg interval = 180 secs
Re = -237.15 (215.81, -98.15, -5.73 GSE)

1.7d VMS-SunOS

LZ version = v01

WIND/WAVES Summary Plot (Page 1) for 16-SEP-2004, DOY = 260

DAILY Thu Sep 4, 2008
Re = 235.79 (214.73, -97.18, -6.29 GSE)



RAD2 Antenna Mode SUM/SEP Toggle
RAD1 Antenna Mode SUM/SEP Toggle
TNR Antenna Mode Sweep