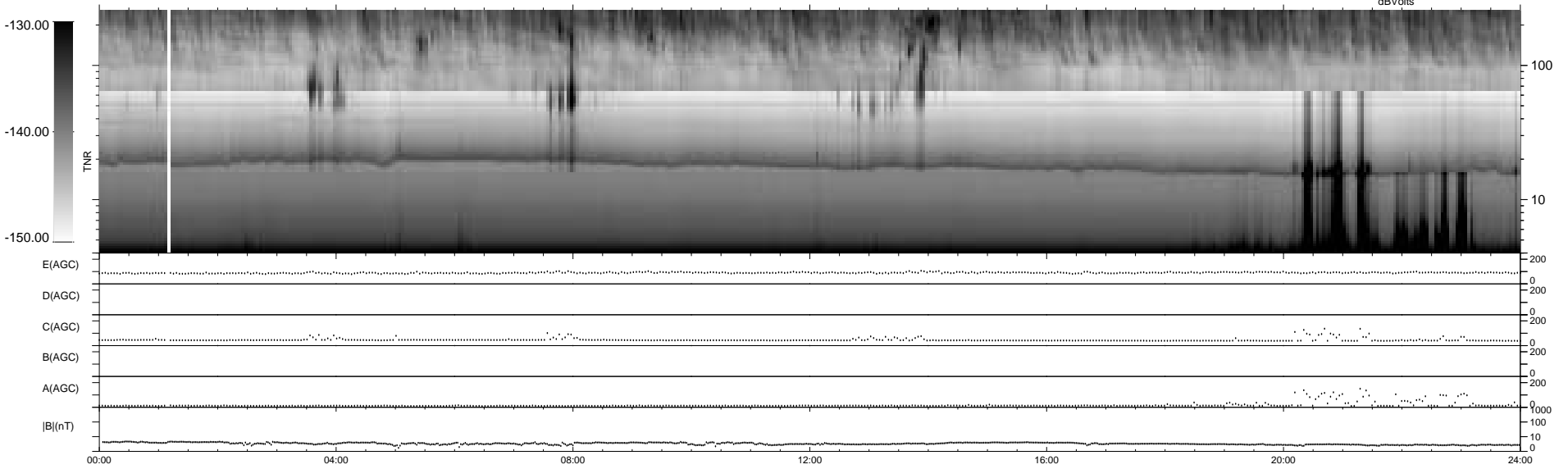
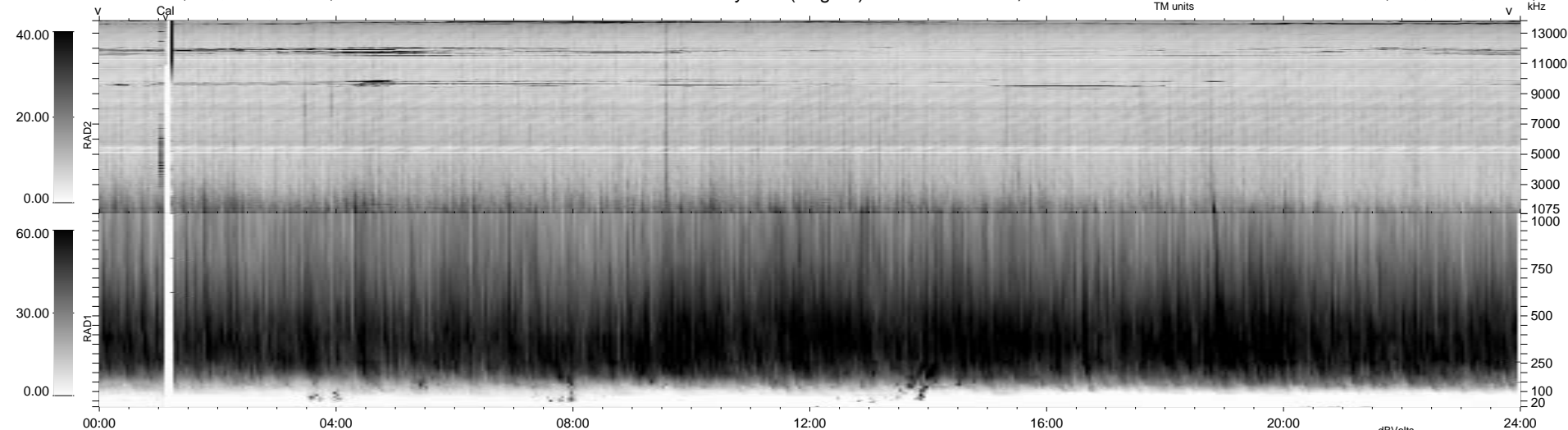


0 bad + 2 good MF/ZMF projected (100%) - 0 missing MFs
 Avg interval = 180 secs
 Re = -246.21 (224.31, -101.50, -1.05 GSE)

1.7d VMS-SunOS LZ version = v01
 DAILY Thu Sep 4, 2008
 Re = 245.29 (223.27, -101.57, -1.63 GSE)

WIND/WAVES Summary Plot (Page 1) for 08-SEP-2004, DOY = 252



```

RAD2
Antenna Ey .....
Mode LIN(1) .....
SUM/SEP SUM .....
Toggle OFF .....

RAD1
Antenna Ex .....
Mode LIS(2,3) .....
SUM/SEP SUM .....
Toggle OFF .....

TNR
Antenna ExEy .....
Mode A-32 .....
Sweep ACE .....
  
```