

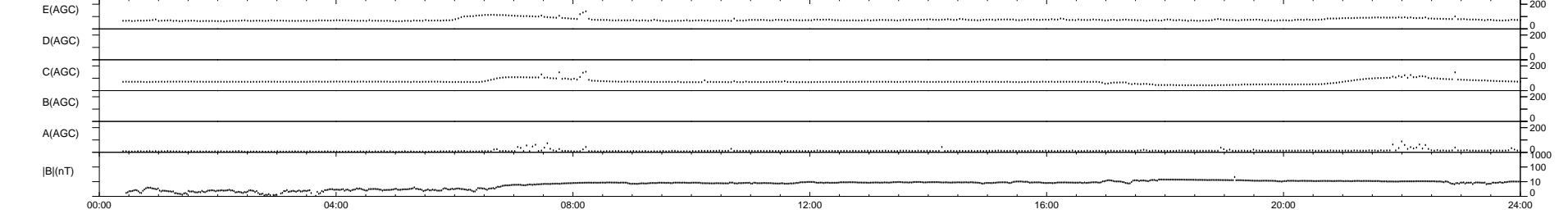
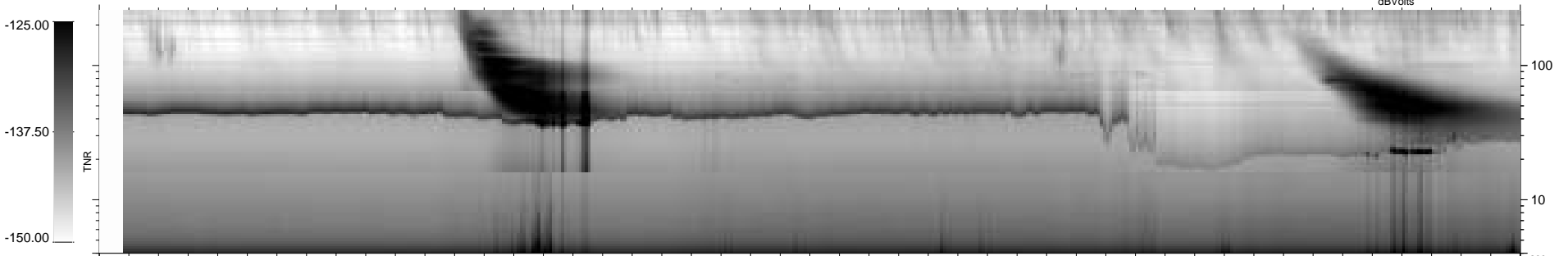
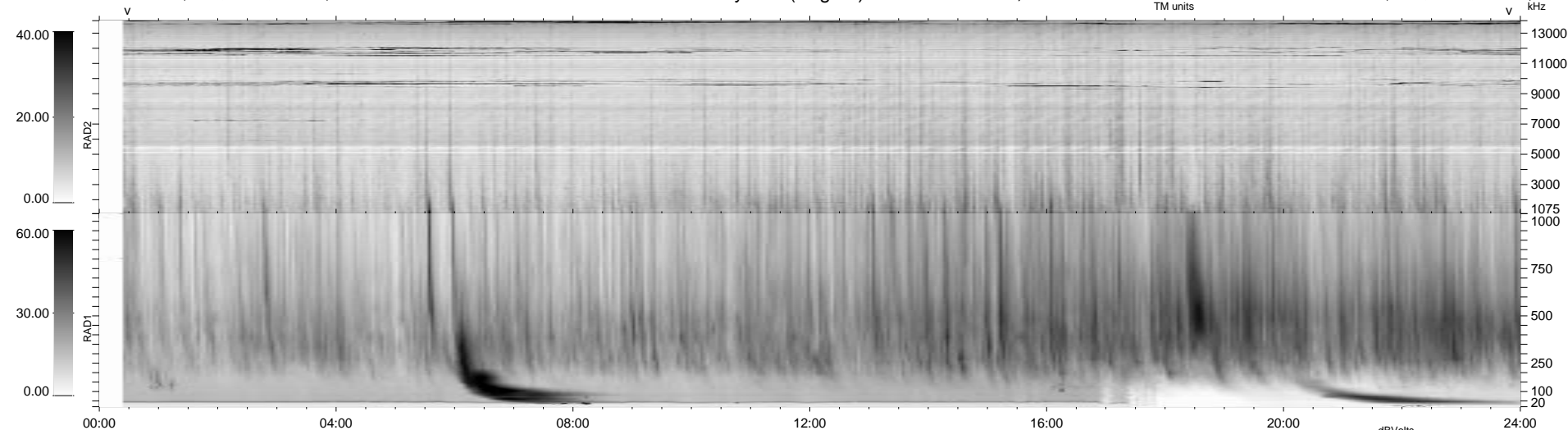
0 bad + 2 good MF/ZMF projected (100%) - 0 missing MFs  
Avg interval = 180 secs  
Re = -248.67 (227.49, -100.43, 0.68 GSE)

1.7d VMS-SunOS

LZ version = v01

### WIND/WAVES Summary Plot (Page 1) for 05-SEP-2004, DOY = 249

DAILY Thu Sep 4, 2008  
Re = 247.91 (226.44, -100.92, 0.12 GSE)



RAD2 Antenna Mode SUM/SEP Toggle  
RAD1 Antenna Mode SUM/SEP Toggle  
TNR Antenna Mode Sweep