

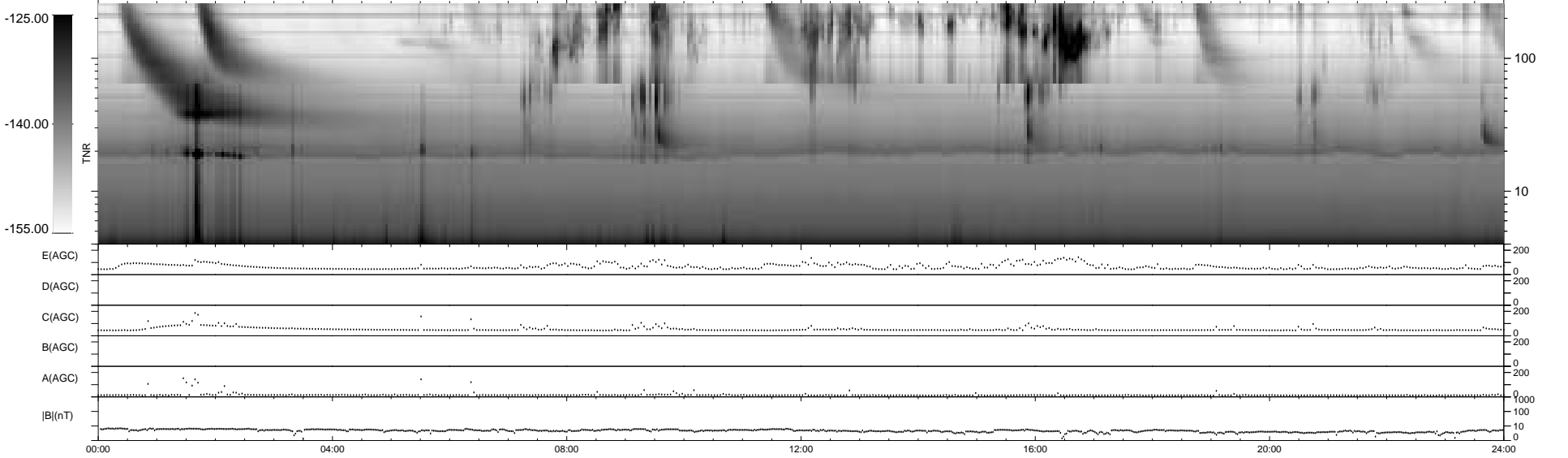
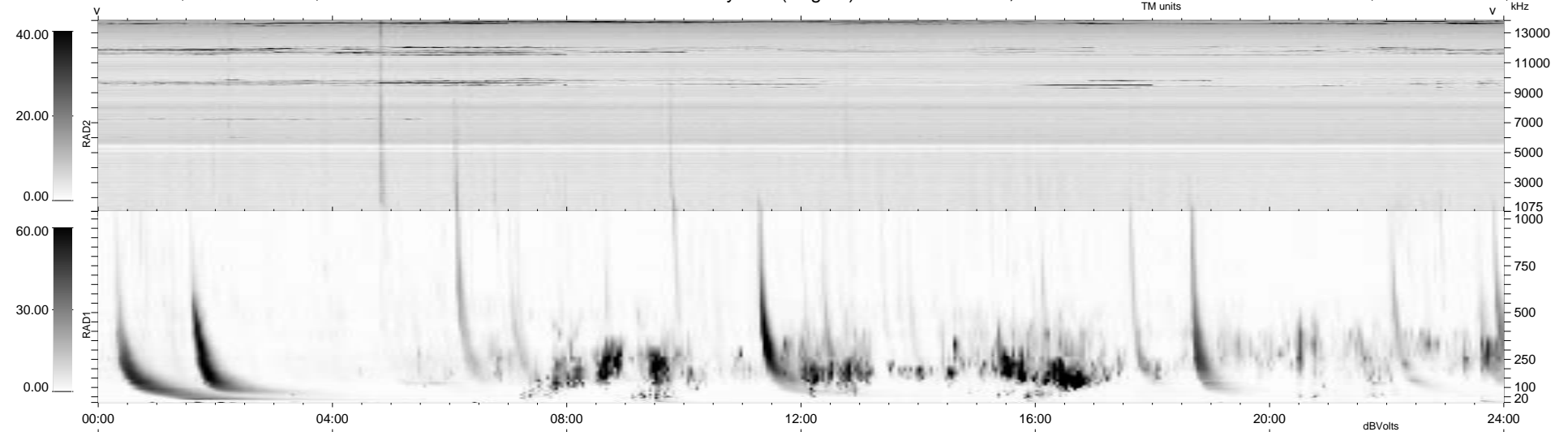
0 bad + 2 good MF/ZMF projected (100%) - 0 missing MFs
 Avg interval = 180 secs
 Re = -258.05 (244.91, -80.84, 8.62 GSE)

1.7d VMS-SunOS

LZ version = v01

WIND/WAVES Summary Plot (Page 1) for 22-AUG-2004, DOY = 235

DAILY Wed Sep 3, 2008
 Re = 257.43 (243.63, -82.77, 8.08 GSE)



RAD2
 Antenna Ey
 Mode LIN(1)
 SUM/SEP SUM
 Toggle OFF
 RAD1
 Antenna Ex
 Mode LIS(2,3)
 SUM/SEP SUM
 Toggle OFF
 TNR
 Antenna ExEy
 Mode A-32
 Sweep ACE