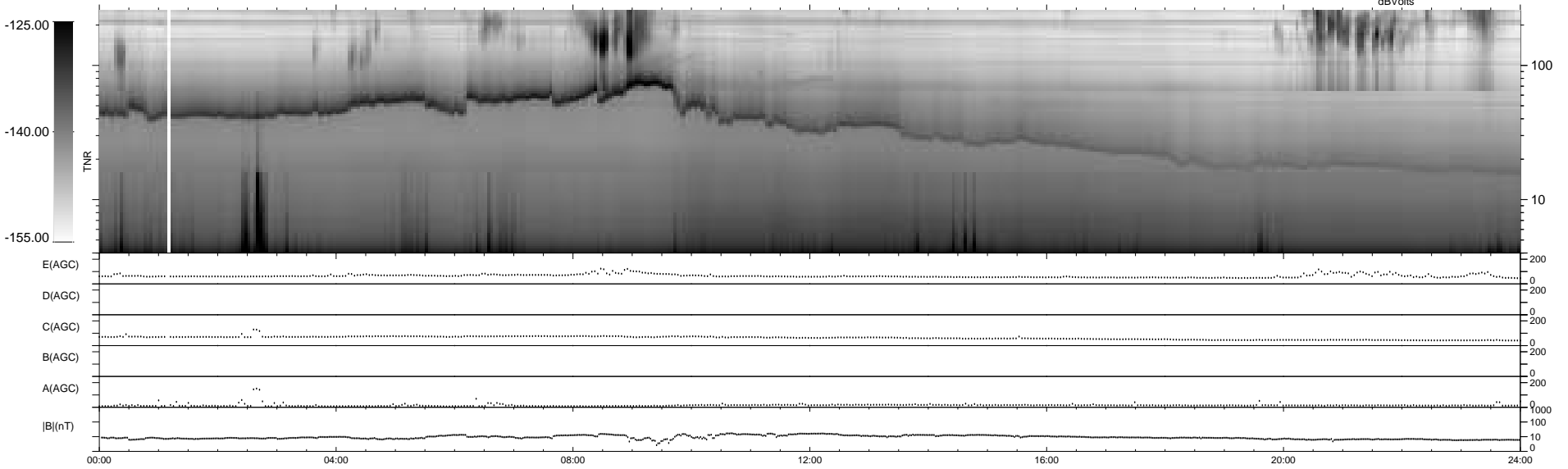
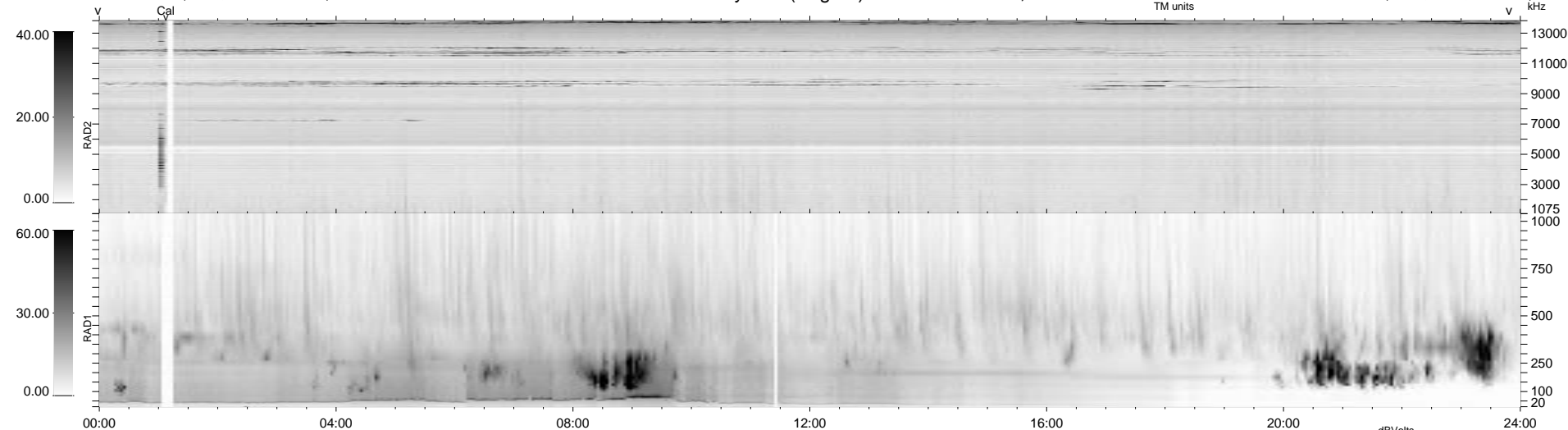


0 bad + 2 good MF/ZMF projected (100%) - 0 missing MFs
 Avg interval = 180 secs
 Re = -261.83 (257.78, -43.25, 15.34 GSE)

1.7d VMS-SunOS LZ version = v01
 DAILY Wed Sep 3, 2008
 Re = 261.89 (257.33, -46.30, 15.00 GSE)

WIND/WAVES Summary Plot (Page 1) for 07-AUG-2004, DOY = 220



```

RAD2
Antenna Ey .....
Mode LIN(1) .....
SUM/SEP SUM .....
Toggle OFF .....

RAD1
Antenna Ex .....
Mode LIS(2,3) .....
SUM/SEP SUM .....
Toggle OFF .....

TNR
Antenna ExEy .....
Mode A-32 .....
Sweep ACE .....
  
```