

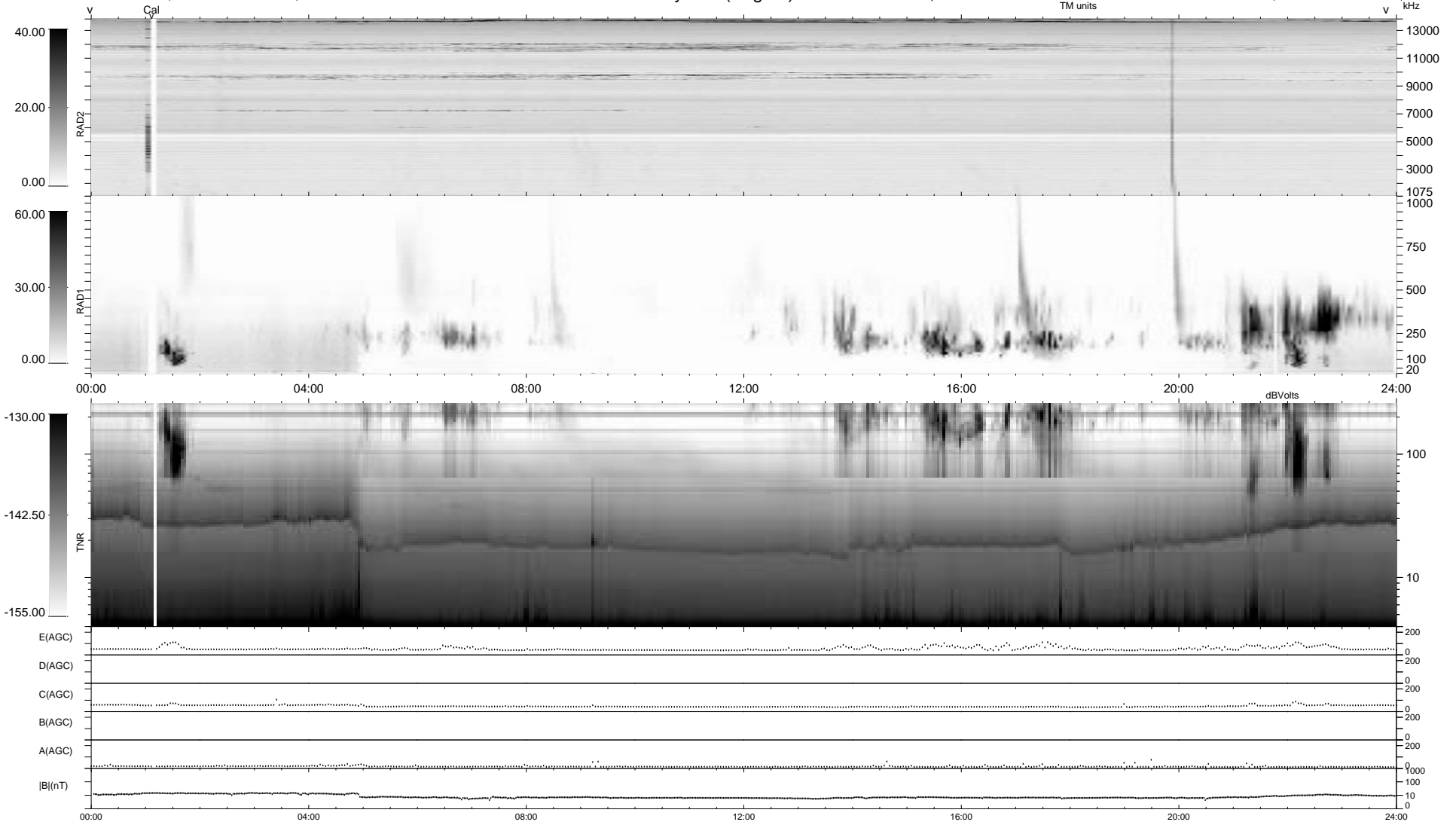
0 bad + 2 good MF/ZMF projected (100%) - 0 missing MFs
 Avg interval = 180 secs
 Re = -258.38 (254.45, 40.69, 18.96 GSE)

1.7d VMS-SunOS

LZ version = v02

WIND/WAVES Summary Plot (Page 1) for 12-JUL-2004, DOY = 194

DAILY Wed Sep 3, 2008
 Re = 258.91 (255.42, 37.84, 19.06 GSE)



```

RAD2
Antenna Ey .....
Mode LIN(1) .....
SUM/SEP SUM .....
Toggle OFF .....

RAD1
Antenna Ex .....
Mode LIS(2,3) .....
SUM/SEP SUM .....
Toggle OFF .....

TNR
Antenna ExEy .....
Mode A-32 .....
Sweep ACE .....
  
```