

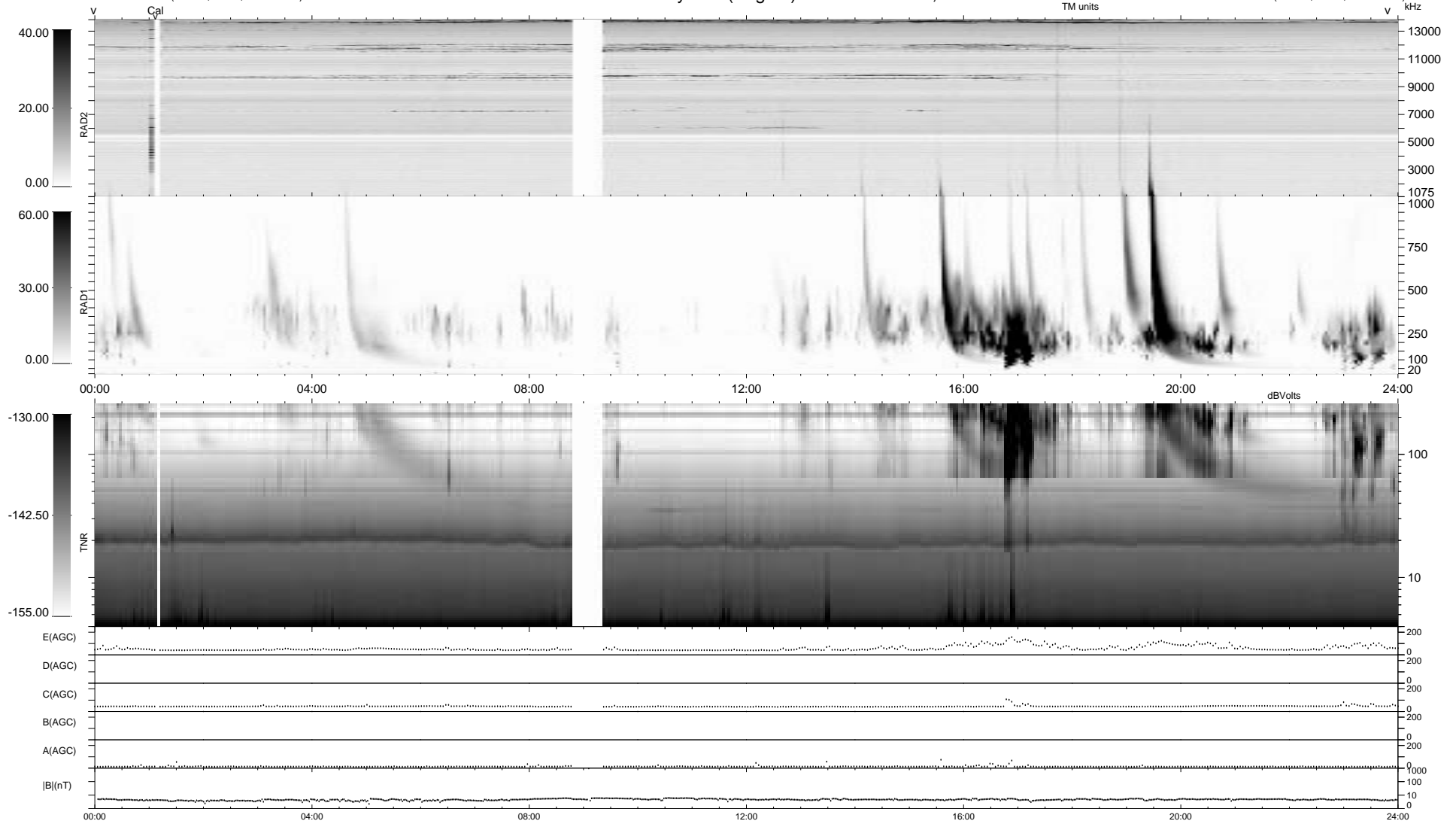
0 bad + 2 good MF/ZMF projected (100%) - 0 missing MFs  
 Avg interval = 180 secs  
 Re = -251.76 (242.06, 67.10, 17.07 GSE)

1.7d VMS-SunOS

LZ version = v01

### WIND/WAVES Summary Plot (Page 1) for 02-JUL-2004, DOY = 184

DAILY Wed Sep 3, 2008  
 Re = 252.45 (243.39, 64.75, 17.33 GSE)



```

RAD2
Antenna Ey .....
Mode LIN(1) .....
SUM/SEP SUM .....
Toggle OFF .....

RAD1
Antenna Ex .....
Mode LIS(2,3) .....
SUM/SEP SUM .....
Toggle OFF .....

TNR
Antenna ExEy .....
Mode A-32 .....
Sweep ACE .....
  
```