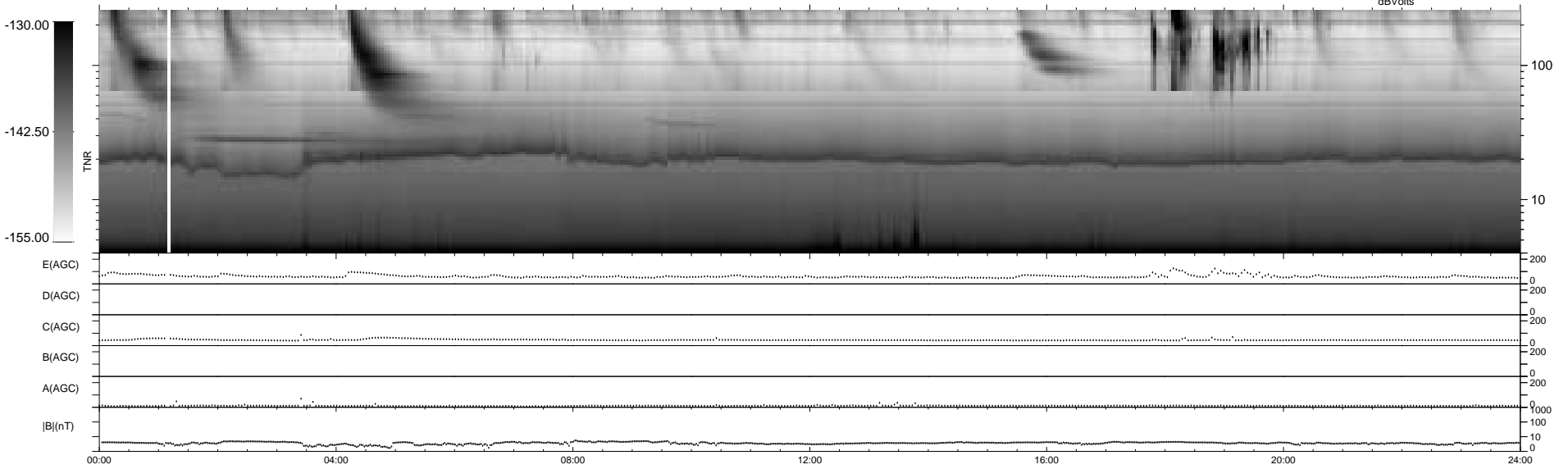
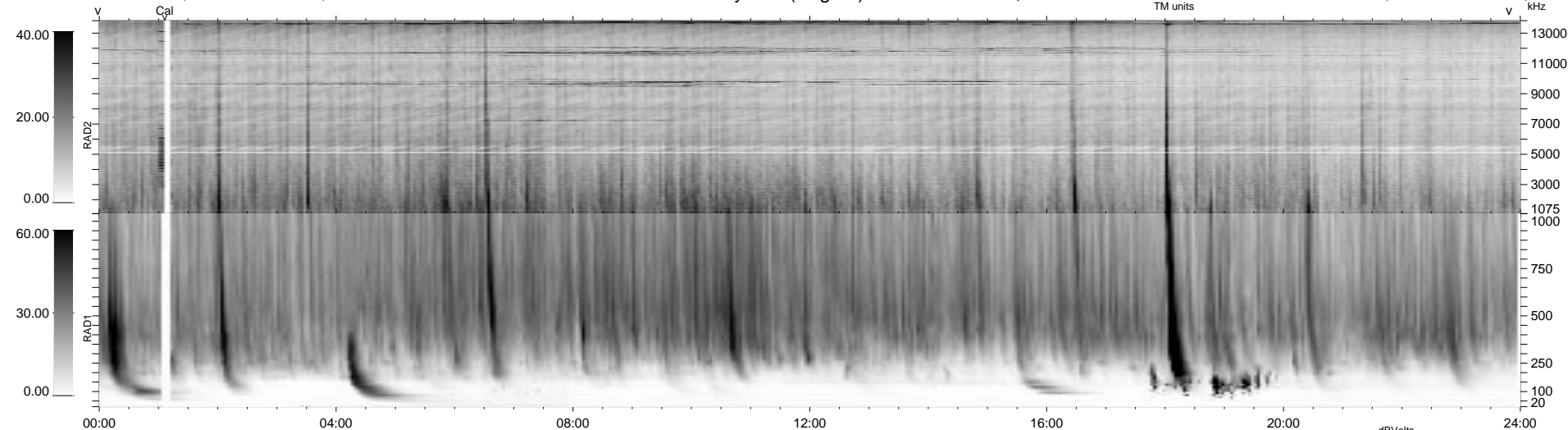


0 bad + 2 good MF/ZMF projected (100%) - 0 missing MFs
 Avg interval = 180 secs
 Re = 240.59 (224.55, 85.45, 12.74 GSE)

1.7d VMS-SunOS LZ version = v01
 DAILY Wed Sep 3, 2008
 Re = 241.91 (226.20, 84.72, 13.19 GSE)

WIND/WAVES Summary Plot (Page 1) for 20-JUN-2004, DOY = 172



```

RAD2
Antenna Ey .....
Mode LIN(1) .....
SUM/SEP SUM .....
Toggle OFF .....

RAD1
Antenna Ex .....
Mode LIS(2.8) .....
SUM/SEP SUM .....
Toggle OFF .....

TNR
Antenna ExEy .....
Mode A-32 .....
Sweep ACE .....
  
```