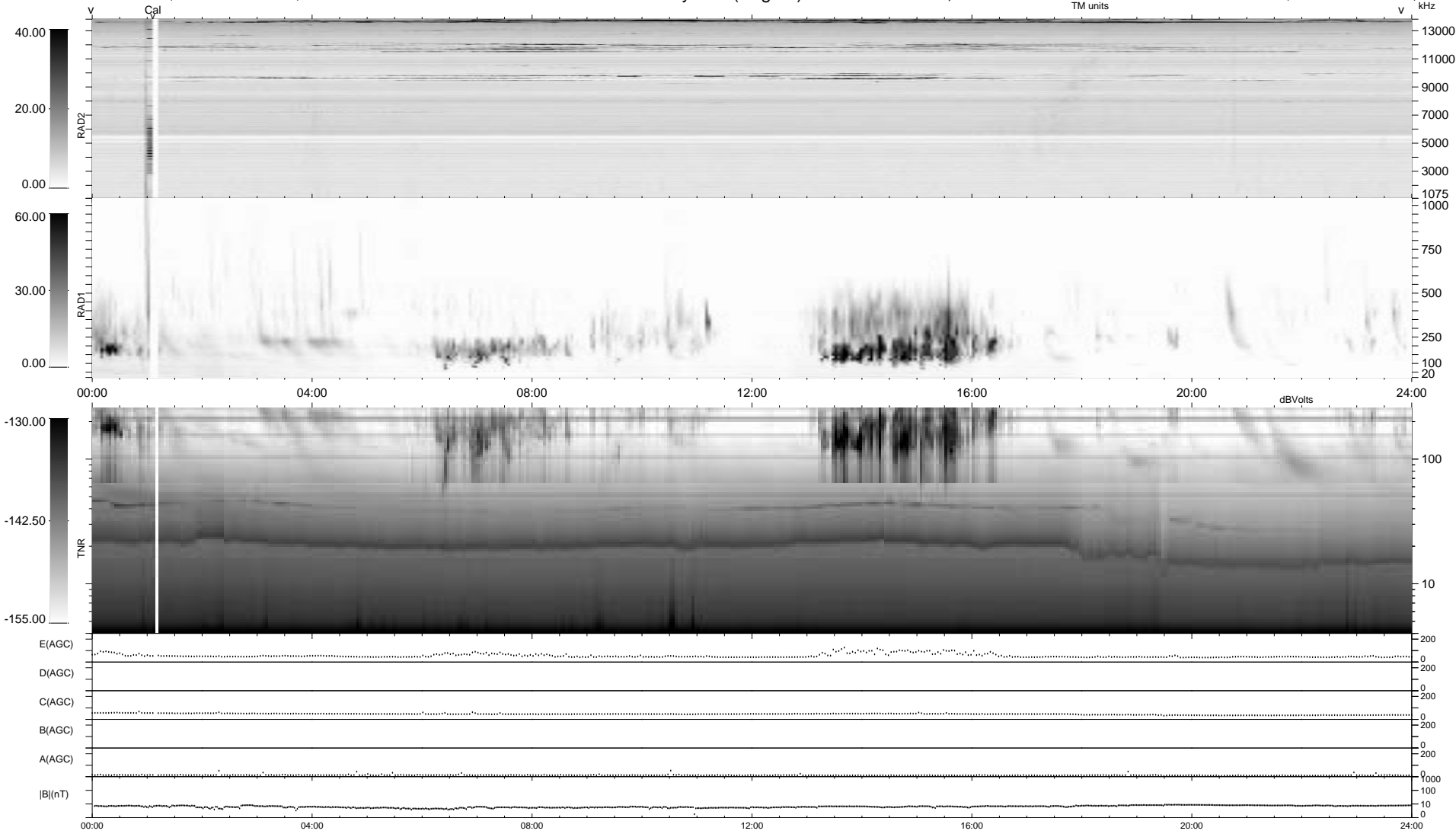


0 bad + 2 good MF/ZMF projected (100%) - 0 missing MFs  
 Avg interval = 180 secs  
 Re = 163.91 (159.19, 38.70, -5.21 GSE)

1.7d VMS-SunOS LZ version = v01  
 DAILY Wed Sep 3, 2008  
 Re = 167.78 (162.11, 42.99, -4.60 GSE)

WIND/WAVES Summary Plot (Page 1) for 21-MAY-2004, DOY = 142



RAD2  
 Antenna Ey .....  
 Mode LIN(1) .....  
 SUM/SEP SUM .....  
 Toggle OFF .....  
 RAD1  
 Antenna Ex .....  
 Mode LIS(2,3) .....  
 SUM/SEP SUM .....  
 Toggle OFF .....  
 TNR  
 Antenna ExEy .....  
 Mode A-32 .....  
 Sweep ACE .....